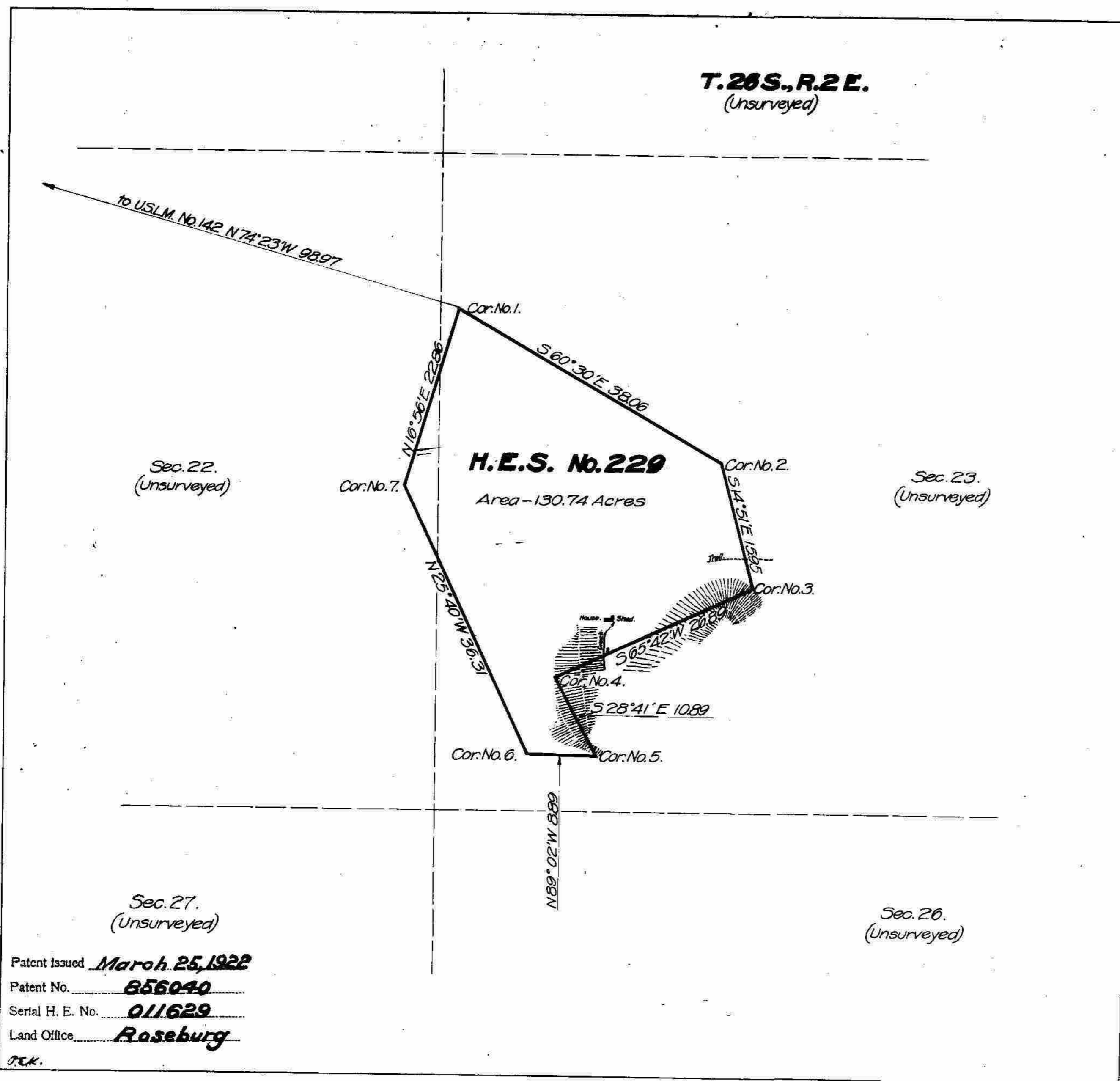


Survey accepted March 28, 1919
B.L.D.



Plat of
**HOMESTEAD
ENTRY SURVEY**
No. **229**
in the
UMPQUA
NATIONAL FOREST
in approximate
Section 22, unsurveyed, T.26S., R.2E.,
Section 23, unsurveyed, T.26S., R.2E.
of the
WILLAMETTE MERIDIAN
OREGON

This plat of Homestead Entry Survey
No. 229 State of OREGON is
strictly conformable to the field notes
thereof on file in this office, which
have been examined and approved.
U.S. Surveyor General's Office
Portland, Oregon.
June 26, 1918

Edward Worth
U.S. Surveyor General

Patent Issued **March 25, 1922**
Patent No. **856040**
Serial H. E. No. **011629**
Land Office **Roseburg**

SCALE 10 chains to 1 inch

Surveys Designated	By whom Surveyed	Inst. Cont. Group		When Surveyed		Date of Approval
		No.	Date	Began	Completed	
H.E. Survey No. 229	Geo. W. Root Surveyor-Forest Service	229	March 17, 1917	Oct. 19, 1917	Oct. 21, 1917	June 26, 1918

Areas in Acres	
H.E. Survey No. 229	Conflicts
In Section	
In Section	
In Section	
In Section	
Total	130.74

Act of June 11, 1906	Act of March 4, 1917
List No. 0-2032	Dated February 28, 1917
Latitude 43° 17' N	Observations at
Longitude 122° 33' W	Corner No. 4
Mean Mag. Decl. 21° 12' E	

In pencil on 4-590 B.