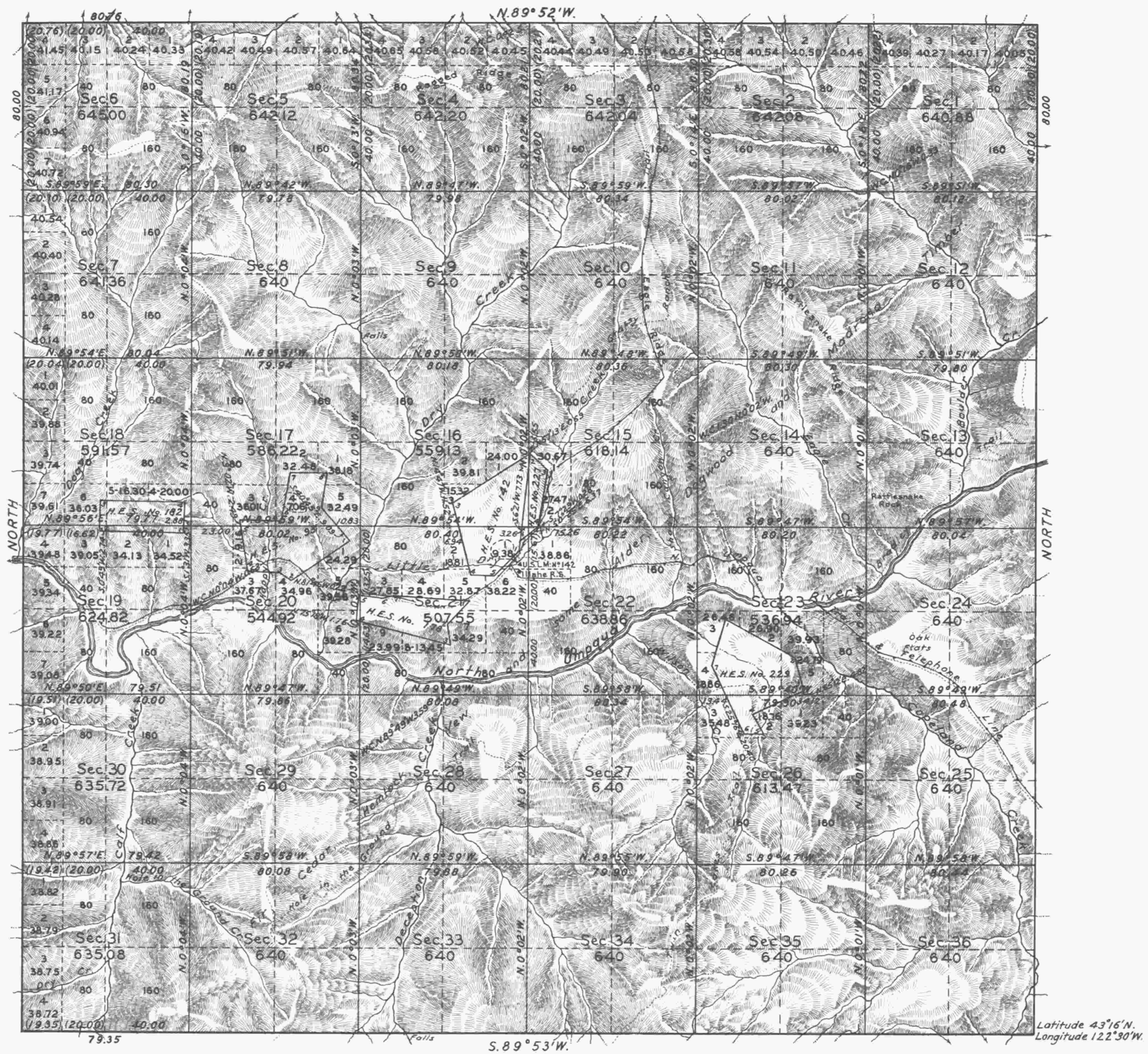


TOWNSHIP N<sup>o</sup> 26 SOUTH, RANGE N<sup>o</sup> 2 EAST, OF THE WILLAMETTE MERIDIAN, OREGON.



Mean Magnetic Declination 21°30'E. Scale: 40 Chains to an inch. Area Surveyed 22,468.10 Acres

LINES DESIGNATED	BY WHOM SURVEYED	GROUP		MILEAGE		WHEN SURVEYED	
		N <sup>o</sup>	DATE	MLS.	CHS.	BEGUN	COMPLETED
Exterior	Otto L. Draper			12	0.76	Sept. 2, 1929	July 10, 1930
Subdivisional		63	Dec. 24, 1920	60	3.22	" 10, "	Aug. 11, "
Miscellaneous				10	69.41	" 17 "	" " "

Office of U.S. Supervisor of Surveys,  
Denver, Colorado, Aug. 24, 1931.  
The above plat of Township N<sup>o</sup> 26 South, Range N<sup>o</sup> 2 East,  
of the Willamette Meridian, Oregon, is strictly conformable  
to the field notes of the survey thereof which have  
been examined and approved.

*Franklin Johnson*  
U.S. Supervisor of Surveys.

DEPARTMENT OF THE INTERIOR  
GENERAL LAND OFFICE

Washington, D.C., January 19, 1932  
The survey represented by this plat  
having been correctly executed in accordance  
with the requirements of law and the regulations  
of this office, is hereby accepted.

*John C. Howell*  
Assistant Commissioner.

*Handwritten initials and date*