

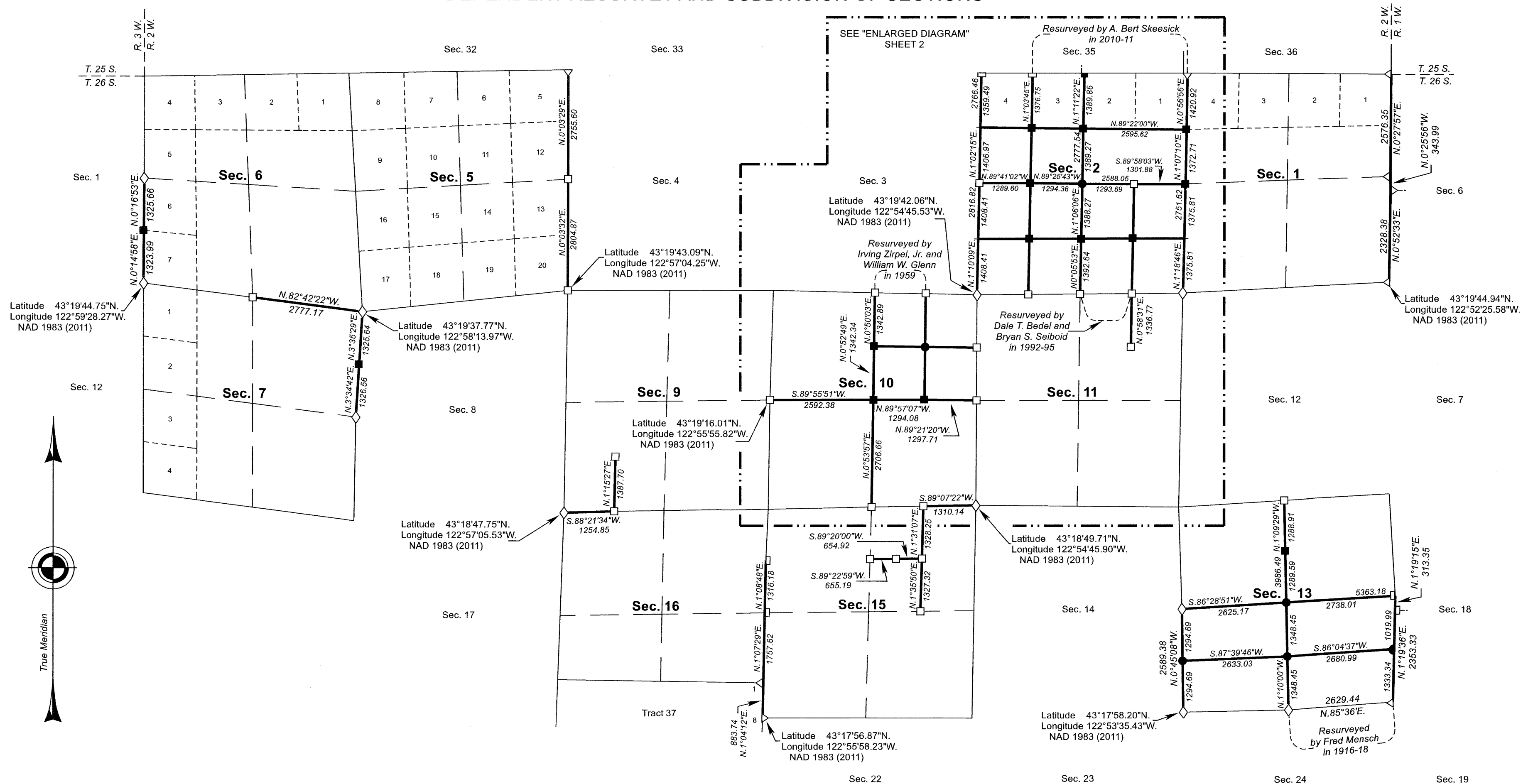
Date: 9/20/2022 By: JC  
This survey consists of:  
Map: T26-2 2022-1  
LINE NOTES: VOL. 59  
PGS 24037-24083

SHEET 1 OF 2

DOUGLAS COUNTY  
SURVEYOR

# TOWNSHIP 26 SOUTH, RANGE 2 WEST, OF THE WILLAMETTE MERIDIAN, OREGON

## DEPENDENT RESURVEY AND SUBDIVISION OF SECTIONS



Latitude 43°19'44.75"N.  
Longitude 122°59'28.27"W.  
NAD 1983 (2011)

Latitude 43°19'37.77"N.  
Longitude 122°58'13.97"W.  
NAD 1983 (2011)

Latitude 43°19'43.09"N.  
Longitude 122°57'04.25"W.  
NAD 1983 (2011)

Latitude 43°19'42.06"N.  
Longitude 122°54'45.53"W.  
NAD 1983 (2011)

Latitude 43°19'16.01"N.  
Longitude 122°55'55.82"W.  
NAD 1983 (2011)

Latitude 43°18'47.75"N.  
Longitude 122°57'05.53"W.  
NAD 1983 (2011)

Latitude 43°17'56.87"N.  
Longitude 122°55'58.23"W.  
NAD 1983 (2011)

Latitude 43°17'58.20"N.  
Longitude 122°53'35.43"W.  
NAD 1983 (2011)

Latitude 43°19'44.94"N.  
Longitude 122°52'25.58"W.  
NAD 1983 (2011)

LEGAL SUBDIVISION	OFFICIAL ACRES
<b>SECTION 2</b>	
LOT 1	42.55
LOT 2	41.09
LOT 3	41.05
NE1/4 SW1/4	41.44
NW1/4 SE1/4	41.00
SW1/4 SE1/4	41.32
<b>SECTION 10</b>	
NW1/4 NE1/4	39.57
<b>SECTION 13</b>	
NE1/4 SW1/4	40.27
NW1/4 SW1/4	39.45
SW1/4 SE1/4	40.85
SE1/4 SE1/4	40.56
TOTAL AREA	449.15
FEDERAL INTEREST LAND RESURVEYED	

LEGEND	
◇	Original corner previously remonumented
□	Corner previously established or reestablished
■	Corner previously established or reestablished; remonumented this survey
●	Corner established or reestablished this survey
+	Corner point calculated, no monument set

A history of surveys, corner descriptions, and other relevant information are contained in the field notes.

This plat represents the dependent resurvey of portions of the east boundary, west boundary, subdivisional lines, and subdivision of section lines of sections 9, 11, and 15, designed to restore the corners in their true original locations according to the best available evidence, and the subdivision of sections 2, 10, and 13, Township 26 South, Range 2 West, Willamette Meridian, Oregon.

Official areas based on the measurements of this survey have been returned for federal interest land where indicated. Aliquot part legal subdivisions retain their aliquot characteristics and refer to precisely the same land as that which was previously identified by its original survey or description. Except as indicated hereon, the lottings and areas are as shown on the plats approved April 7, 1884, and January 4, 1919, and the plat accepted August 29, 1960.

Survey executed by Jeffrey O. Covington, Cadastral Surveyor, beginning July 16, 2018, and completed March 31, 2020, pursuant to special instructions approved May 14, 2018, for Group No. 2923, Oregon.

UNITED STATES DEPARTMENT OF THE INTERIOR  
BUREAU OF LAND MANAGEMENT

Portland, Oregon

This plat is strictly conformable to the approved field notes, and the survey, having been correctly executed in accordance with the requirements of law and the regulations of this Bureau, is hereby accepted.

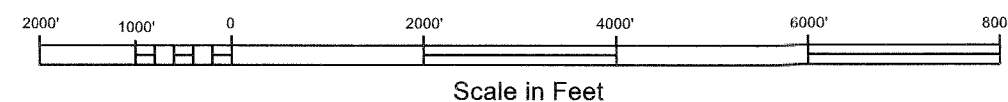
For the Director

*Mary J. M. Hartzel*

Chief Cadastral Surveyor of Oregon

*April 26, 2022*

Date



OFFICIALLY FILED: 9/21/2022

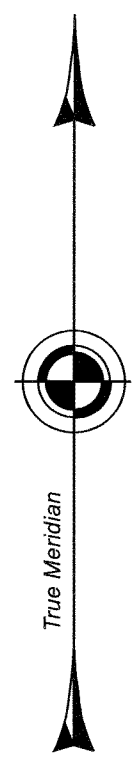
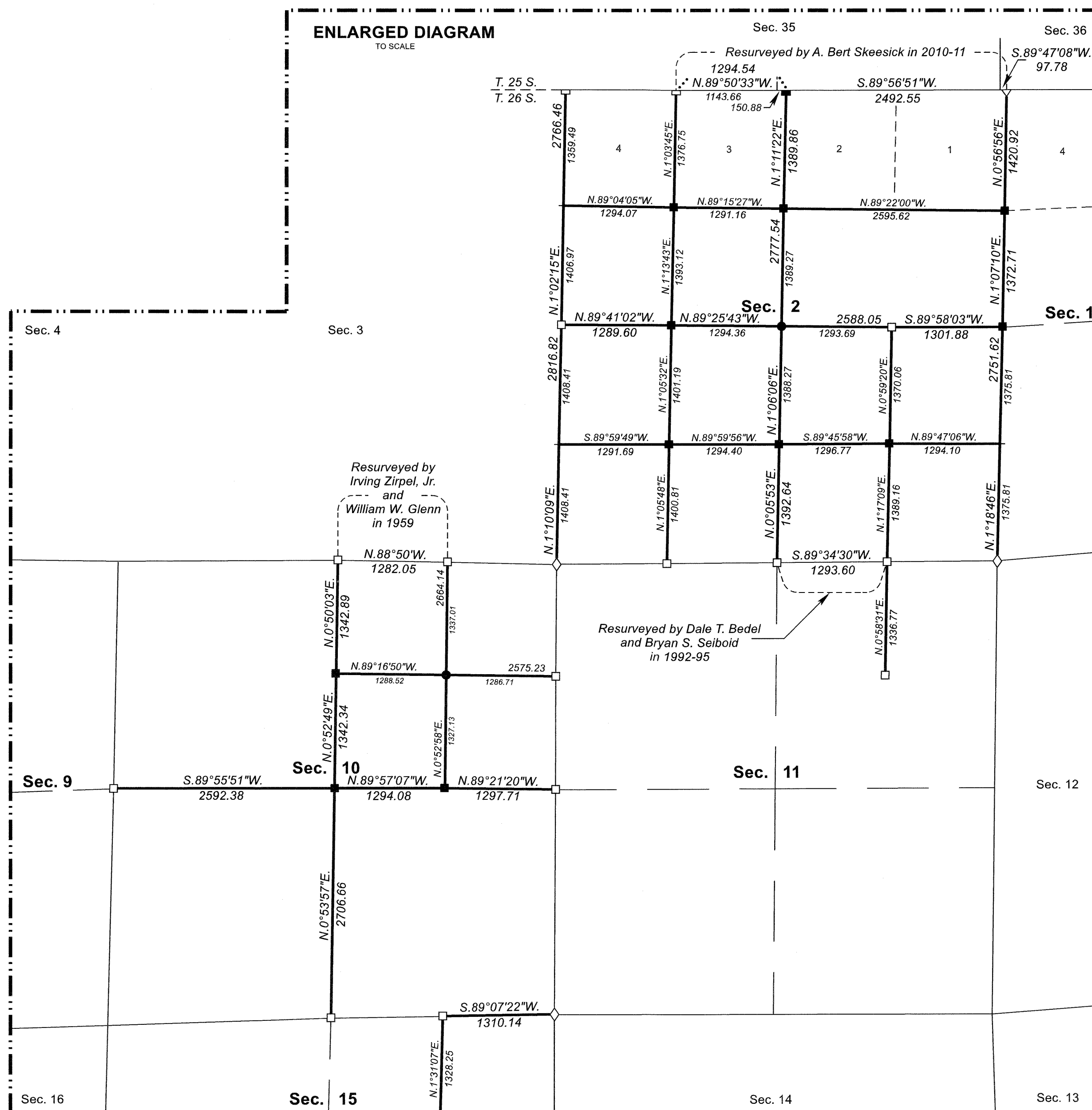
# TOWNSHIP 26 SOUTH, RANGE 2 WEST, OF THE WILLAMETTE MERIDIAN, OREGON

SHEET 2 OF 2

## DEPENDENT RESURVEY AND SUBDIVISION OF SECTIONS

FILED  
 Date: 9/20/2022 By: JC  
 This survey consists of:  
 Map: T26-2 2022-1  
 LINE NOTES: VOL. 59  
 PGS 24037-24083  
 DOUGLAS COUNTY  
 SURVEYOR

OFFICIALLY FILED: 7/21/2022



**LEGEND**

- ◊ Original corner previously remonumented
- Corner previously established or reestablished
- Corner previously established or reestablished; remonumented this survey
- Corner established or reestablished this survey
- + Corner point calculated, no monument set

UNITED STATES DEPARTMENT OF THE INTERIOR  
 BUREAU OF LAND MANAGEMENT

Portland, Oregon

This plat is strictly conformable to the approved field notes, and the survey, having been correctly executed in accordance with the requirements of law and the regulations of this Bureau, is hereby accepted.

For the Director

*Mary J. M. Hartzel*

Chief Cadastral Surveyor of Oregon

*April 26, 2022*

Date

