

TOWNSHIP 26 SOUTH, RANGE 2 WEST, OF THE WILLAMETTE MERIDIAN, OREGON

DEPENDENT RESURVEY

Date: 9/18/2017 By: JC
 This survey consists of:
 Map: PLAT. T26-2 2017-1
 Narrative: VOL. 58 PAGES
 Corner Rpt: 23486-23487
NO SEPARATE LINE NOTES
 DOUGLAS COUNTY
 SURVEYOR

SHEET 1 OF 2

This plat constitutes the entire record of the dependent resurvey of a portion of the west boundary and subdivisional lines, designed to restore the corners in their true original locations according to the best available evidence, Township 26 South, Range 2 West, Willamette Meridian, Oregon.

The directions of the lines are based on the true meridian as determined by Global Positioning System (GPS) techniques and carried forward by sustained angulation using conventional survey techniques. All measurements along the lines were derived through the use of electronic measuring equipment. Measured distances and directions have been adjusted by computer software that incorporates a least squares adjustment routine. The adjusted mean bearings and mean horizontal ground elevation distances are reported to the nearest second and 0.01 foot.

Preliminary to the resurvey, the lines of the official original surveys and resurveys were retraced and a search was made for all corners, lines, other calls of record, and where available, collateral evidence of local surveys and corners. Identified corners were perpetuated in their original positions; lost corners were reestablished and monumented at proportionate positions based on the official record. The retracement data was thoroughly verified and only the true line field data are given hereon.

A magnet in a white plastic case was deposited at the base of each stainless steel post, and each new bearing tree has a 2 1/2 inch x 1/4 inch magnetic nail (Mag Nail) driven at the base on right side center, unless otherwise noted in the corner description. Only those lines bounding Federal interest land were posted and blazed.

The geographic positions shown hereon were determined by ties from temporary GPS control points utilizing dual frequency, carrier phase GPS receivers, and processed using the National Geodetic Online Positioning User Service (OPUS).

The survey was executed in accordance with the specification set forth in the Manual of Surveying Instructions (2009), and the special instructions approved October 7, 2015, for Group No. 2817, Oregon, by Joel R. Herzberg, Cadastral Surveyor, beginning October 8, 2015, and completed November 5, 2015. He was assisted by Cody E. Coppernoll and Paul A. Guglielmelli, Surveying Technicians, and Robert C. Moyers, Surveying Technician, USDA-FS.

The history of official surveys pertaining to this survey is as follows:

In 1855, Addison R. Flint, U.S. Deputy Surveyor, surveyed the east boundary and a portion of the subdivisional lines of T. 26 S., R. 3 W., as shown on the official plat of survey approved December 10, 1855.

In 1879, William H. Byars, U.S. Deputy Surveyor, surveyed a portion of the subdivisional lines of T. 26 S., R. 3 W., as shown on the official plat of survey approved March 27, 1879.

In 1882, Samuel C. Flint, U.S. Deputy Surveyor, surveyed the remainder of the subdivisional lines of T. 26 S., R. 3 W., as shown on the official plat of survey approved October 23, 1882.

In 1883, John A. McQuinn, U.S. Deputy Surveyor, surveyed a portion of the west boundary and subdivisional lines as shown on the official plat of survey approved April 7, 1884.

In 1909-10, William N. Gibb, U.S. Deputy Surveyor, retraced a portion of the exterior boundaries and subdivisional lines, resurveyed a portion of the subdivisional lines, and surveyed a portion of the subdivisional lines as shown on the official plat of survey approved October 17, 1911.

In 1913-14, Charles M. Collier, U.S. Surveyor, dependently resurveyed a portion of the west boundary as shown on the official plat of survey approved June 21, 1917.

In 1916-18, Fred Mensch, U.S. Cadastral Engineer, retraced a portion of the west boundary and dependently resurveyed a portion of the subdivisional lines as shown on the official plat of survey approved January 4, 1919.

In 1959, Irving Zirpel, Jr. and William W. Glenn, Cadastral Surveyors, dependently resurveyed a portion of the west boundary and subdivisional lines as shown on the official plat of survey accepted August 29, 1960.

In 2004, Timothy J. Moore, Cadastral Surveyor, and Robert H. Browning, Surveying Technician, retraced a portion of the subdivisional lines of T. 26 S., R. 3 W., as shown on the official plat of survey accepted October 16, 2008.

The following County Surveys (CS) and corner renewal index (CRI) filed in the Douglas County Surveyor's Office, are referred to in subsequent corner descriptions and are referenced by surveyor's last name, official title of Registered Professional Engineer (RPE) No., and year.

Date	Name and Registration Number	File Number
1952	Lester E. Calder, RPE No. 2149	CS 41/76A
1965	Douglas County Surveyor's Office	CS 54/7
03/1978	Douglas County Surveyor's Office	CRI 140400
07/1978	Douglas County Surveyor's Office	CS 60/11
2005	Douglas County Surveyor's Office	CS 67/10-25

LEGEND

- ◊ Original corner previously remonumented
- Corner previously established or reestablished

UNITED STATES DEPARTMENT OF THE INTERIOR
 BUREAU OF LAND MANAGEMENT

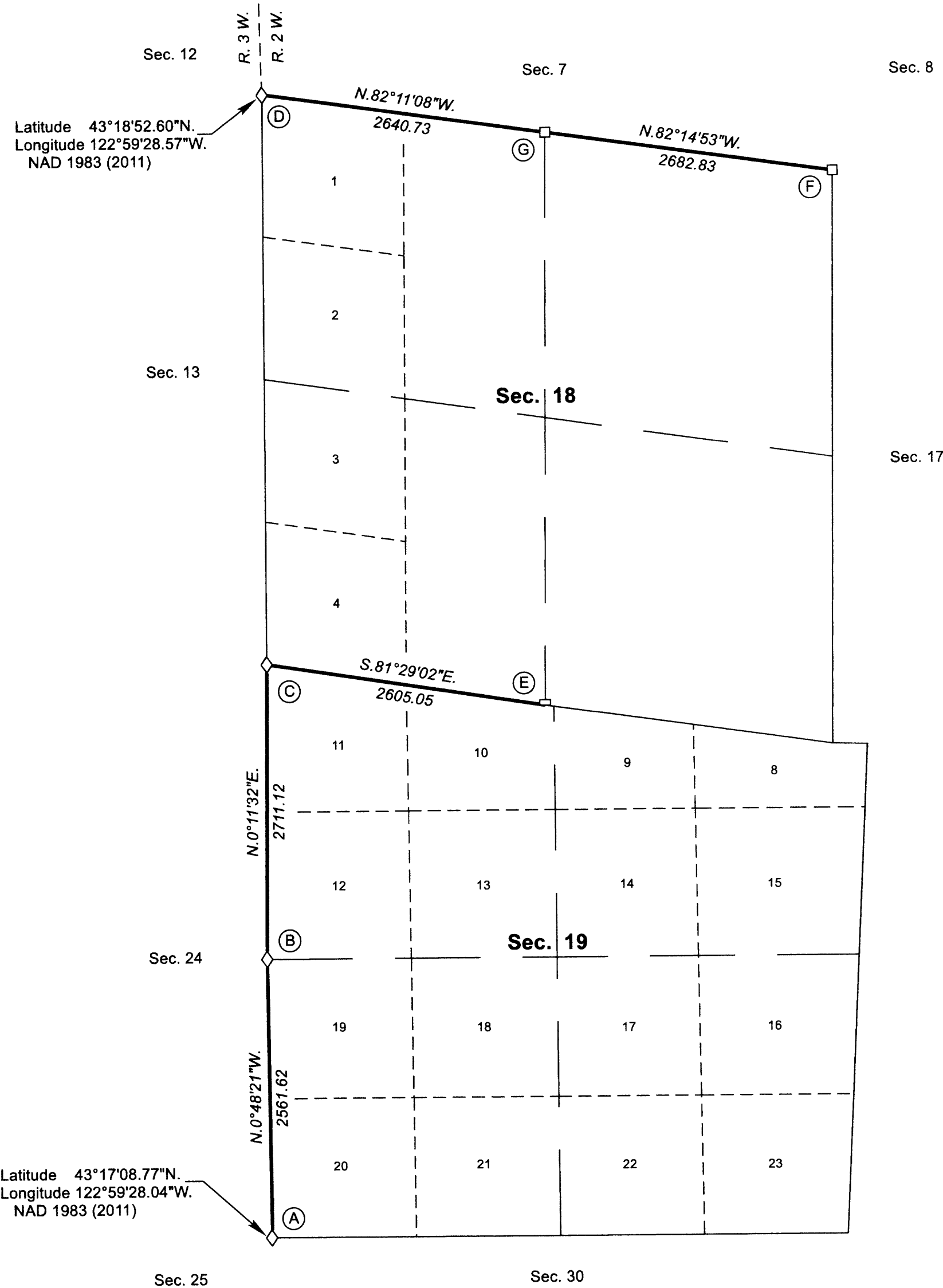
Portland, Oregon

The survey represented by this plat, having been correctly executed in accordance with the requirements of law and the regulations of this Bureau, is hereby accepted.

For the Director

Mary J. M. Hartz
 Chief Cadastral Surveyor of Oregon

April 18, 2017
 Date



Latitude 43°18'52.60"N.
 Longitude 122°59'28.57"W.
 NAD 1983 (2011)



Latitude 43°17'08.77"N.
 Longitude 122°59'28.04"W.
 NAD 1983 (2011)

I, Joel R. Herzberg, Cadastral Surveyor, HEREBY CERTIFY upon honor, that in pursuance of special instructions bearing the approval date of the 7th day of October, 2015, and the assignment instructions bearing the date of the 7th day of October, 2015, I have dependently resurveyed a portion of the west boundary and subdivisional lines, Township 26 South, Range 2 West, Willamette Meridian, Oregon, which is represented upon this plat as having been executed by me and under my direction; and that said survey has been made in strict conformity with said special instructions, the Manual of Surveying Instructions, and in the specific manner described on this plat.

Joel R. Herzberg
 Cadastral Surveyor

4-11-17
 Date



OFFICIALLY FILED: 7/20/2017

TOWNSHIP 26 SOUTH, RANGE 2 WEST, OF THE WILLAMETTE MERIDIAN, OREGON

DEPENDENT RESURVEY

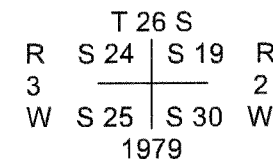
FILED

Date: 9/18/2017 By: JC
This survey consists of:
Map: PLAT: T26-2 2017-1
Narrative: VOL. 58 PAGES
Corner Rpt: 23486-23487
DOUGLAS COUNTY SURVEYOR

SHEET 2 OF 2

OFFICIALLY FILED: 7/20/2017

(A) The cor. of secs. 19, 24, 25, and 30, on the W. bdy. of the Tp., monumented with an iron post, 1 1/4 ins. diam., firmly set, projecting 8 ins. above the ground, (the original stone, 8 x 10 x 14 ins., buried alongside, projecting 2 ins. above the ground, with 4 grooves visible on N. face and 2 grooves visible on S. face) with brass cap mkd.



from which the remaining bearing trees mkd. by Gibb in 1909-10, and reported by Moore in 2004

A fir, 27 ins. diam., bears N. 52° E., 17.8 ft. dist., with a healed blaze.

A fir, 32 ins. diam., bears S. 14° E., 17.2 ft. dist., with a healed blaze.

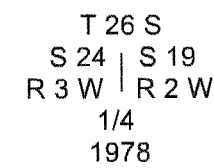
A fir, 18 ins. diam., bears N. 18° W., 11.9 ft. dist., with a healed blaze.

and a bearing tree mkd. by Calder, RPE No. 2149, in 1952, and reported by Moore

A fir, 17 ins. diam., bears S. 51 1/2° W., 17.8 ft. dist., with a healed blaze.

A steel fence post is alongside the cor.

(B) The 1/4 sec. cor. of secs. 19 and 24, on the W. bdy. of the Tp., perpetuated by the Douglas County Surveyor's Office in July of 1978, monumented with an iron pipe, 1 in. diam., firmly set, projecting 8 ins. above the ground, with brass cap mkd.



from which the remains of a bearing tree mkd. by Gibb in 1909-10

A burnt madrone snag, 14 ins. diam., bears N. 69° E., 8.6 ft. dist., and a hollow blaze with no marks visible.

and the remains of the bearing trees mkd. by the Douglas County Surveyor's Office

A burnt fir snag, 36 ins. diam., bears S. 53 1/4° E., 17.2 ft. dist., with a healed blaze.

A burnt fir snag, 22 ins. diam., bears S. 70 1/2° W., 33.5 ft. dist., with a healed blaze.

and new reference monuments

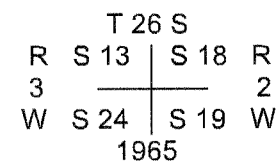
A stainless steel post, 28 ins. long, 2 1/2 ins. diam., set 24 ins. in the ground for a reference monument, bears S. 76° 57' 07" E., 30.10 ft. dist., with brass cap mkd. RM1 1/4 S19 30.1 FT TO COR 2015 and an arrow pointing to the cor.

A stainless steel post, 28 ins. long, 2 1/2 ins. diam., set 24 ins. in the ground for a reference monument, bears S. 27° 40' 02" W., 50.20 ft. dist., with brass cap mkd. RM2 1/4 S24 50.2 FT TO COR 2015 and an arrow pointing to the cor.

A steel fence post alongside the cor.

D.C.W.

(C) The cor. of secs. 13, 18, 19, and 24, on the W. bdy. of the Tp., perpetuated by the Douglas County Surveyor's Office in 1965, from original evidence no longer in existence, monumented with an iron pipe, 1 1/4 ins. diam., firmly set, in a rock outcrop, projecting 6 ins. above the ground, with brass cap mkd.



from which new accessories

A fir, 16 ins. diam., bears N. 46 1/2° E., 113.3 ft. dist., mkd. T26S R2W S18 BT.

A rock cut bank, 15 ft. high, bears S. 8° 58' 37" W., 36.30 ft. dist., to a Mag-Nail driven in crack, with marks BO chiseled in the rock face, 3 ft. high up the rock face.

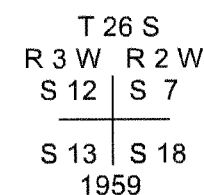
A fir, 9 ins. diam., bears N. 32° W., 54.3 ft. dist., mkd. T26S R3W S13 BT.

Corner is located

S., 35 ft. dist., from a gravel road, 12 ft. wide, extending N. 80° E. and S. 80° W.

From this cor., a point established as a witness cor. for the cor. of secs. 13, 18, 19, and 24, on the W. bdy. of the Tp., by Glenn S. Baughman, PLS No. 536, in 1980, in an unfiled survey, bears S. 0° 07' 32" E., 57.57 ft. dist., and is accepted as a reference monument, monumented with an iron pipe, 2 ins. diam., firmly set, projecting 2 ins. above the ground in a collar of stone, with brass cap mkd. WC T26S R3W S13 S18 R2W S24 S19 1980 LS 536.

(D) The cor. of secs. 7, 12, 13, and 18, on the W. bdy. of the Tp., monumented with an iron post, 2 1/2 ins. diam., firmly set, projecting 8 ins. above the ground (alongside of which is the stone set by Collier in 1913-14, 14 x 10 x 6 ins., with no marks visible), in a mound of stone, 3 ft. base, to the top, with brass cap mkd.



from which the remains of the bearing trees mkd. by Zirpel and Glenn in 1959

A burnt fir snag, 56 ins. diam., bears N. 59 1/4° E., 73.3 ft. dist., with a healed blaze.

A burnt sawed cedar stump, size indeterminate, bears S. 69 1/2° E., 39.9 ft. dist., with illegible scribe marks visible on a partially opened blaze.

A burnt cedar snag, 29 ins. diam., bears S. 70 1/2° W., 31.7 ft. dist., with a healed blaze.

A burnt cedar snag, 35 ins. diam., bears N. 57° W., 32.3 ft. dist., with a healed blaze.

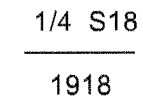
and new reference monuments

A stainless steel post, 28 ins. long, 2 1/2 ins. diam., set 22 ins. in the ground, in a mound of stone, 2 ft. base, to the top, for a reference monument, bears S. 32° 43' 48" W., 20.40 ft. dist., with brass cap mkd. RM1 S13 T26S R3W 20.4 FT TO COR 2015 and an arrow pointing to the cor.

A stainless steel post, 28 ins. long, 2 1/2 ins. diam., set 22 ins. in the ground, in a mound of stone, 2 ft. base, to the top, for a reference monument, bears N. 70° 38' 34" W., 41.6 ft. dist., with brass cap mkd. RM2 T26S R3W S12 41.6 FT TO COR 2015 and an arrow pointing to the cor.

Drive an aluminum angle iron, 5 ft. long, alongside the cor.

(E) The 1/4 sec. cor. of sec. 18 only, perpetuated by the Douglas County Surveyor's Office in March of 1978, monumented with an iron pipe, 1 in. diam., firmly set, projecting 2 ins. above the ground, with brass cap mkd.



from which the remains of the bearing trees mkd. by Mensch in 1916-18

A burnt fir snag, size indeterminate, bears N. 47° E., 11.2 ft. dist., with illegible scribe marks visible on an open blaze.

A burnt fir stump, size indeterminate, bears N. 20° W., 38.3 ft. dist., with no marks visible and a spike in the stump facing the cor.

and the remains of a bearing tree mkd. by persons unknown, reported by the Douglas County Surveyor's Office

A burnt fir snag, 53 ins. diam., bears S. 29° W., 27.6 ft. dist., with a healed blaze.

and the remains of a bearing tree mkd. by the Douglas County Surveyor's Office

A burnt fir snag, 33 ins. diam., bears S. 77 1/2° E., 41.3 ft. dist., with a healed blaze.

and new reference monuments

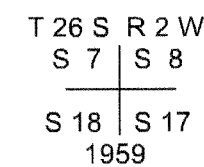
A stainless steel post, 28 ins. long, 2 1/2 ins. diam., set 26 ins. in the ground for a reference monument, bears S. 47° 32' 43" W., 53.20 ft. dist., with brass cap mkd. RM2 S19 53.2 FT TO COR 2015 and an arrow pointing to the cor. Build mound of stone, 2 ft. base, 1 ft. high, and drive an aluminum angle iron, 5 ft. long, alongside the stainless steel post.

A stainless steel post, 28 ins. long, 2 1/2 ins. diam., set 26 ins. in the ground for a reference monument, bears N. 16° 32' 50" W., 26.20 ft. dist., with brass cap mkd. RM1 1/4 S18 26.2 FT TO COR 2015 and an arrow pointing to the cor.

Drive an aluminum angle iron, 5 ft. long, alongside the cor.

Note: The source document for the perpetuation of this cor. by the Douglas County Surveyor's Office is CS 59/46. This document could not be found in the County Surveyor's Office at the time of this survey. The Douglas County Surveyor's Office Corner Renewal Index 140400 was utilized for the information for this cor.

(F) The cor. of secs. 7, 8, 17, and 18, perpetuated by the Douglas County Surveyor's Office in 2005, monumented with an iron post, 2 1/2 ins. diam., firmly set, projecting 4 ins. above the ground, with brass cap mkd.



from which the remains of the bearing trees mkd. by Zirpel and Glenn in 1959

A root hole, bears N. 45 3/4° E., 43.6 ft. dist., with a fallen, decayed hemlock snag, 12 ins. diam., lying alongside, with illegible scribe marks visible on a partially healed blaze. (Record, N. 51° E.)

A cedar, 19 ins. diam., bears S. 54° E., 40.9 ft. dist., with illegible scribe marks visible on a partially healed blaze.

and bearing trees mkd. by the Douglas County Surveyor's Office

A chinquapin, 14 ins. diam., bears N. 88° E., 23.3 ft. dist., with scribe marks T26S R2W S8 CS BT visible on a partially healed blaze.

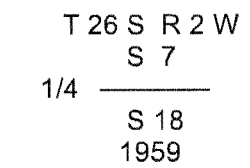
A madrone, 25 ins. diam., bears N. 58 1/2° W., 1.8 ft. dist., with scribe marks T26S R2W S7 CS BT visible on a partially healed bark scribe. Note: Base of tree is growing around the iron post.

and a new bearing tree

A hemlock, 15 ins. diam., bears S. 55° W., 36.0 ft. dist., mkd. T26S R2W S18 BT.

Drive an aluminum angle iron, 5 ft. long, alongside the cor.

(G) The 1/4 sec. cor. of secs. 7 and 18, monumented with an iron post, 2 1/2 ins. diam., firmly set, projecting 12 ins. above the ground, in a mound of stone, 3 ft. base, to the top, with brass cap mkd.



from which the remains of the bearing trees mkd. by Zirpel and Glenn in 1959

A burnt fir stump, size indeterminate, bears S. 19° W., 45.5 ft. dist., with no marks visible.

A burnt fir snag, 33 ins. diam., bears N. 15° W., 38.3 ft. dist., with a healed blaze.

and new reference monuments

A stainless steel post, 28 ins. long, 2 1/2 ins. diam., set 24 ins. in the ground, in a collar of stone, for a reference monument, bears S. 42° 41' 14" W., 19.50 ft. dist., with brass cap mkd. RM1 1/4 S18 19.5 FT TO COR 2015 and an arrow pointing to the cor.

A stainless steel post, 28 ins. long, 2 1/2 ins. diam., set 24 ins. in the ground, in a collar of stone, for a reference monument, bears N. 45° 16' 47" W., 19.60 ft. dist., with brass cap mkd. RM2 1/4 S7 19.6 FT TO COR 2015 and an arrow pointing to the cor.

Drive an aluminum angle iron, 5 ft. long, alongside the cor.

UNITED STATES DEPARTMENT OF THE INTERIOR
BUREAU OF LAND MANAGEMENT

Portland, Oregon

The survey represented by this plat, having been correctly executed in accordance with the requirements of law and the regulations of this Bureau, is hereby accepted.

For the Director

Mary J. M. Hunt

Chief Cadastral Surveyor of Oregon

April 18, 2017

Date