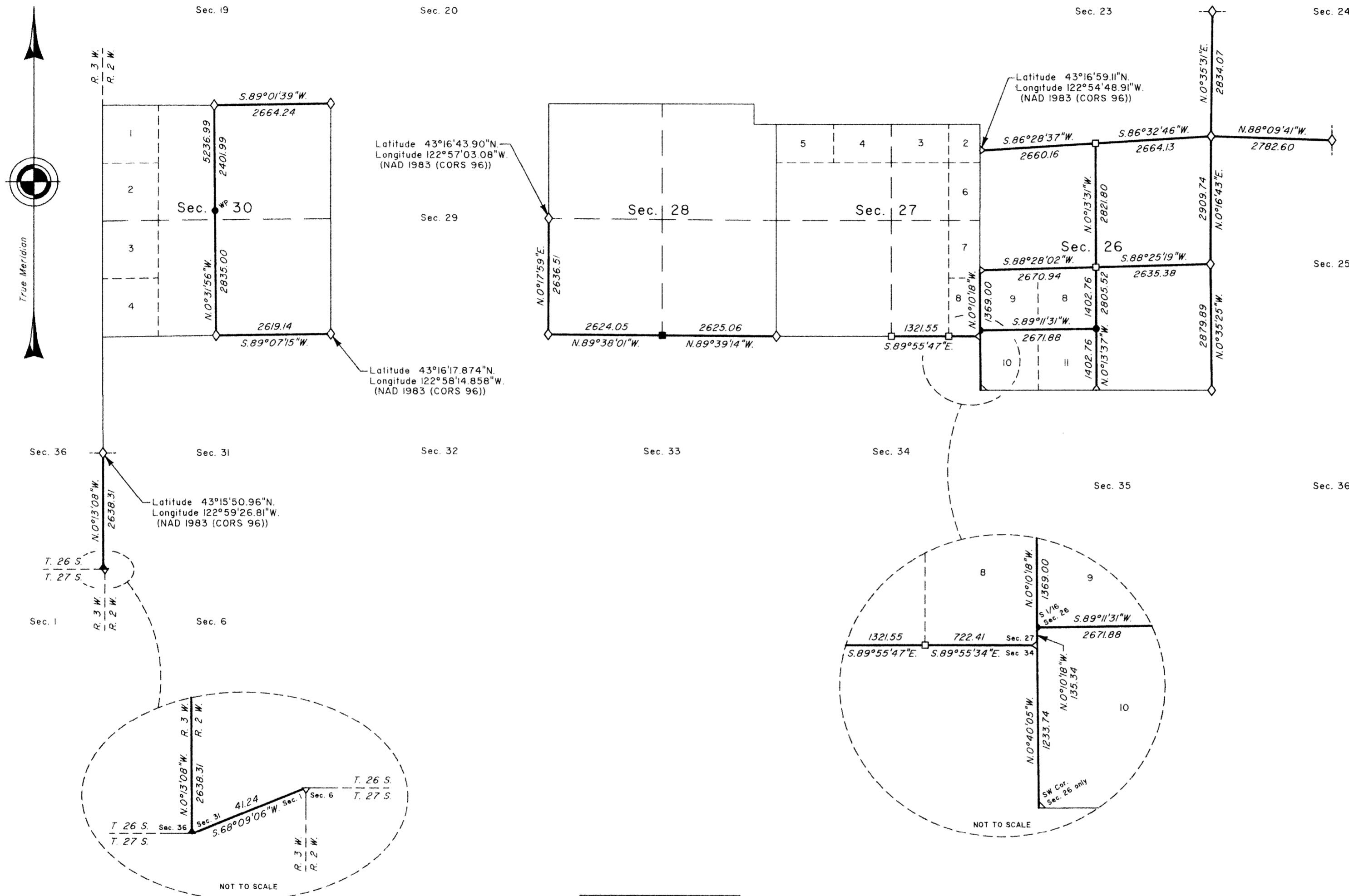


TOWNSHIP 26 SOUTH, RANGE 2 WEST, OF THE WILLAMETTE MERIDIAN, OREGON

CORRECTIVE RESURVEY, DEPENDENT RESURVEY AND SUBDIVISION OF SECTIONS

FILED
 Date: 10/24/2012 By: JC
 This survey consists of:
 Map: VOL. 58 PAGE
 Narrative: 22913-22939
 Corner Rpt: _____

DOUGLAS COUNTY
 SURVEYOR



A history of surveys, corner descriptions, and other relevant information are contained in the field notes.

This plat represents the corrective resurvey of a portion of the south boundary, dependent resurvey of a portion of the west boundary and subdivisional lines, designed to restore the corners in their true original locations according to the best available evidence, and the subdivision of sections 26 and 30, Township 26 South, Range 2 West, Willamette Meridian, Oregon.

Official areas based on the measurements of this survey have been returned for Federal interest lands where indicated. Aliquot part legal subdivisions retain their aliquot characteristics and refer to precisely the same land as that which was previously identified by its original survey or description. A lot can only be subdivided by survey or supplemental plat. Except as indicated hereon, the lottings and areas are as shown on the plats approved April 7, 1884, October 17, 1911, and January 4, 1919.

Survey executed by Kenneth W. Saveland, Cadastral Surveyor, beginning April 28, 2011, and completed October 18, 2011, pursuant to special instructions approved June 30, 2010 and supplemental special instructions approved August 10, 2011, for Group No. 2331, Oregon.

LEGEND	
◇	Original corner previously remonumented
◆	Original corner remonumented this survey
□	Corner previously established or reestablished
■	Corner previously established or reestablished; remonumented this survey
●	Corner established or reestablished this survey

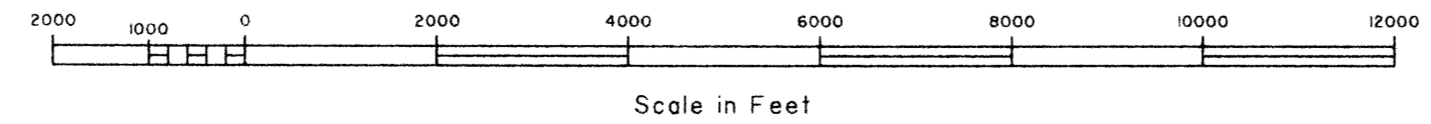
LEGAL SUBDIVISION	OFFICIAL ACRES
SECTION 26	
LOT 8	42.75
LOT 9	42.23
TOTAL AREA	84.98
FEDERAL INTEREST LAND RESURVEYED	

UNITED STATES DEPARTMENT OF THE INTERIOR
 BUREAU OF LAND MANAGEMENT
 Portland, Oregon

This plat is strictly conformable to the approved field notes, and the survey, having been correctly executed in accordance with the requirements of law and the regulations of this Bureau, is hereby accepted.

For the Director
Mary J. M. Hunt
 Chief Cadastral Surveyor of Oregon

August 21, 2012
 Date



OFFICIALLY FILED: 10/22/2012