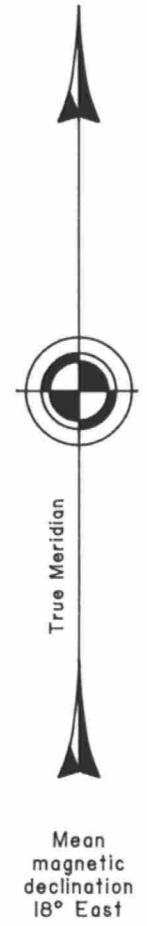
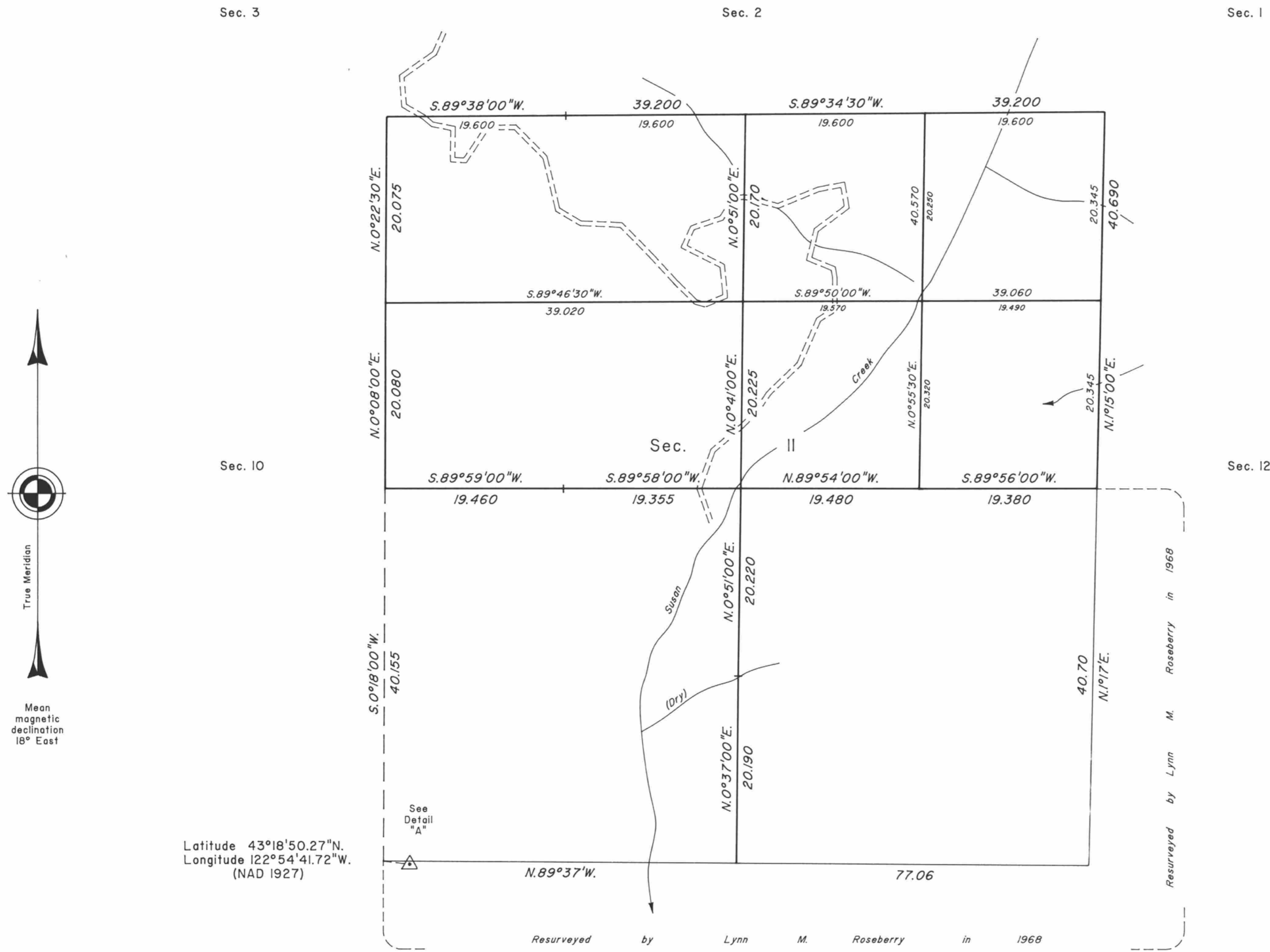


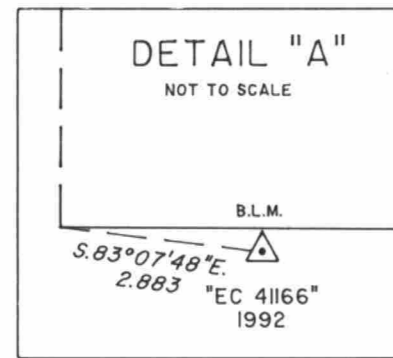
TOWNSHIP 26 SOUTH, RANGE 2 WEST, OF THE WILLAMETTE MERIDIAN, OREGON

SHEET 1 OF 2

DEPENDENT RESURVEY AND SUBDIVISION OF SECTIONS



Latitude 43°18'50.27"N.
 Longitude 122°54'41.72"W.
 (NAD 1927)



A history of surveys is contained in the field notes

This plat represents a dependent resurvey of portions of the south boundary, subdivisional lines, and the boundary of Tract 38, T. 26 S., R. 2 W., Willamette Meridian, Oregon, designed to restore the corners in their true original locations according to the best available evidence, and the subdivision of sections 11 and 35.

The lotting and areas are as shown on the plat approved April 7, 1884, January 4, 1919, and December 27, 1919.

The survey was executed by Dale T. Bedell and Bryan S. Seibold, Cadastral Surveyors, and Robert H. Browning, Surveying Technician, beginning July 14, 1992, and completed April 11, 1995, pursuant to Special Instructions dated March 26, 1992, under Group Number 1638, Oregon

Timber in this area consists of fir, cedar, hemlock, pine, yew, alder, cherry, maple, oak, madrone, willow, ash and chinquapin.

The tie to the geodetic control station is reported as mean bearing and sea level distance.

UNITED STATES DEPARTMENT OF THE INTERIOR
 BUREAU OF LAND MANAGEMENT

Portland, Oregon June 3, 1997

This plat is strictly conformable to the approved field notes, and the survey, having been correctly executed in accordance with the requirements of law and the regulations of this Bureau, is hereby accepted.

For the Director

Wayne M. Gardner
 Chief Cadastral Surveyor of Oregon