

TOWNSHIP 26 SOUTH, RANGE 2 WEST, OF THE WILLAMETTE MERIDIAN, OREGON.  
DEPENDENT RESURVEY AND SUBDIVISION OF SECTION

This plat represents a dependent resurvey of a portion of the subdivisional lines, T. 26 S., R. 2 W., Willamette Meridian, Oregon, designed to restore the corners in their true original locations according to the best available evidence, and the subdivision of section 23.

The lottings and areas are as shown on the supplemental plat accepted February 20, 1920.

A portion of the subdivisional lines was surveyed by John A. McQuinn, in 1883.

A portion of the subdivisional lines was surveyed or resurveyed by William N. Gibb, in 1909.

A corrective survey of a portion of the subdivisional lines was executed by Fred Mensch, in 1916.

A revision of the corrective survey was made by Fred Mensch, in 1918.

A portion of the subdivisional lines was resurveyed by Irving Zirpel, Jr. and William W. Glenn, in 1959.

The resurvey and subdivision of section were executed by G. Steven Popken, Cadastral Surveyor, from June 11, 1975, to September 5, 1975, under Special Instructions dated May 22, 1975, which provide for the surveys included under Group No. 871, Oregon.

UNITED STATES DEPARTMENT OF THE INTERIOR  
BUREAU OF LAND MANAGEMENT  
Washington, D.C. June 23, 1978

This plat is strictly conformable to the approved field notes, and the survey, having been correctly executed in accordance with the requirements of law and the regulations of this Bureau, is hereby accepted.

For the Director

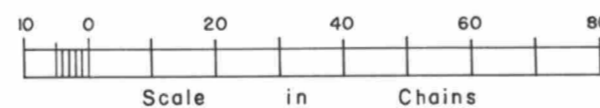
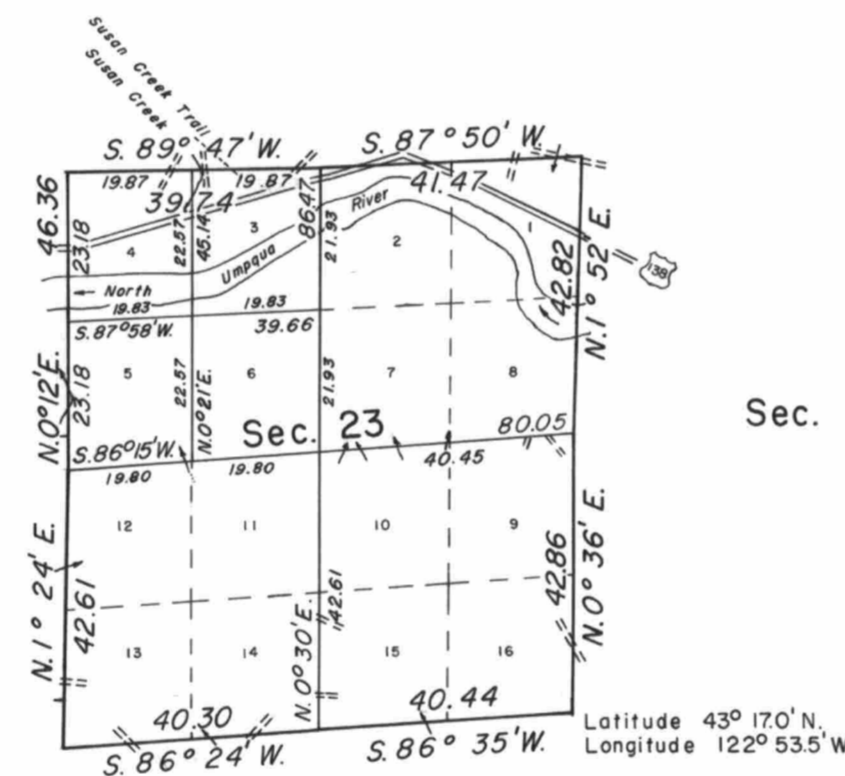
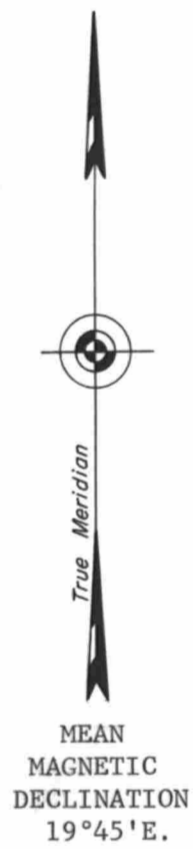
*Bernard W. Popken*

Chief, Division of Cadastral Survey

Sec. 15                      Sec. 14                      Sec. 13

Sec. 22                      Sec. 23                      Sec. 24

Sec. 27                      Sec. 26                      Sec. 25



Timber in this area consists of fir, cedar, hemlock, madrone, and maple.