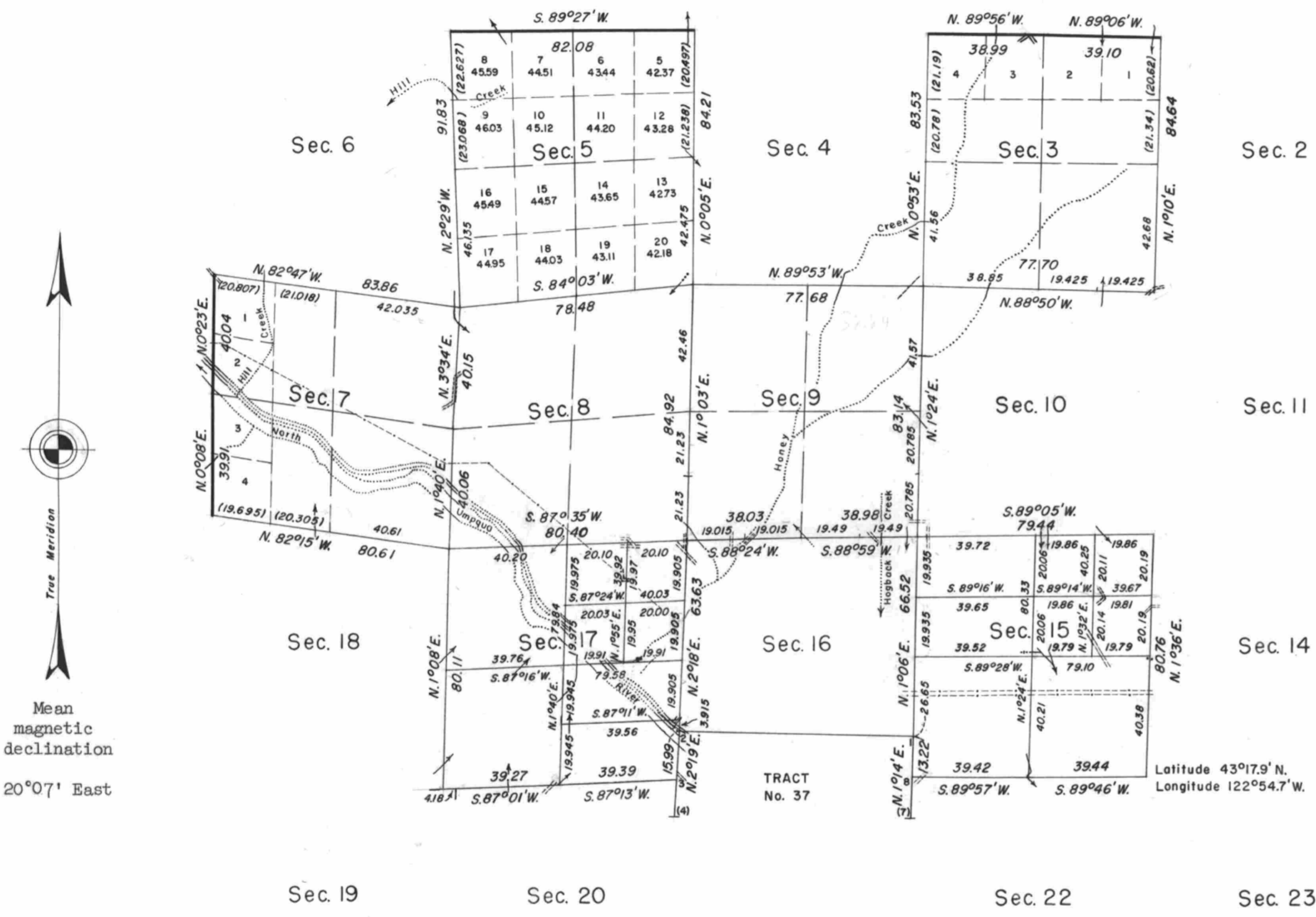


TOWNSHIP 26 SOUTH, RANGE 2 WEST, OF THE WILLAMETTE MERIDIAN, OREGON.

DEPENDENT RESURVEY AND SUBDIVISION



This plat represents a retracement and reestablishment of portions of the north and west boundaries and a portion of the subdivisional lines designed to restore the corners in their true original location according to the best available evidence; and, excepting as new or modified vacant subdivisions are shown hereon, the lottings and areas are as shown on the plat approved April 7, 1884.

The east boundary of Township 26 South, Range 3 West, surveyed by Addison R. Flint in 1855.

The north and east boundaries and a portion of the subdivisional lines surveyed by John A. McQuinn in 1883.

The north boundary retraced by Hezekiah H. Johnson in 1900.

A portion of the subdivisional lines surveyed by William N. Gibbs in 1909-10.

The north boundary and a portion of the west boundary retraced by Charles M. Collier in 1913-14.

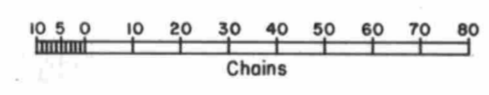
The Collier retracement - reestablishment of the north boundary was checked and corner recoveries found to be correct by Fred Mensch in 1918.

A revision survey was conducted in the south half of the township by Charles M. Collier in 1913, but was later canceled in 1915.

A corrective survey of a portion of the subdivisional lines was executed by Fred Mensch in 1916 and in 1918 Fred Mensch made a revision of his 1916 corrective survey.

Dependent resurvey of portions of the north and west boundaries, a portion of the subdivisional lines, and subdivision of sections 15 and 17, Township 26 South, Range 2 West, Willamette Meridian, Oregon, executed by Irving Zirpel, Jr. and William W. Glenn, May 15 to October 27, 1959, under Special Instructions dated November 21, 1958, which provide for the surveys included under Group No. 404, Oregon.

Timber in this area consists of Douglas fir, hemlock, cedar, sugar pine, madrone, maple, alder, yew, ash, and chinquapin.



Area resurveyed: 4,540.89 acres

UNITED STATES DEPARTMENT OF THE INTERIOR
BUREAU OF LAND MANAGEMENT
Washington, D.C. August 29, 1960

This plat is strictly conformable to the approved field notes, and the survey, having been correctly executed in accordance with the requirements of law and the regulations of this Bureau, is hereby accepted.

For the Director

Clark F. Summ

Acting Cadastral Engineering Staff Officer