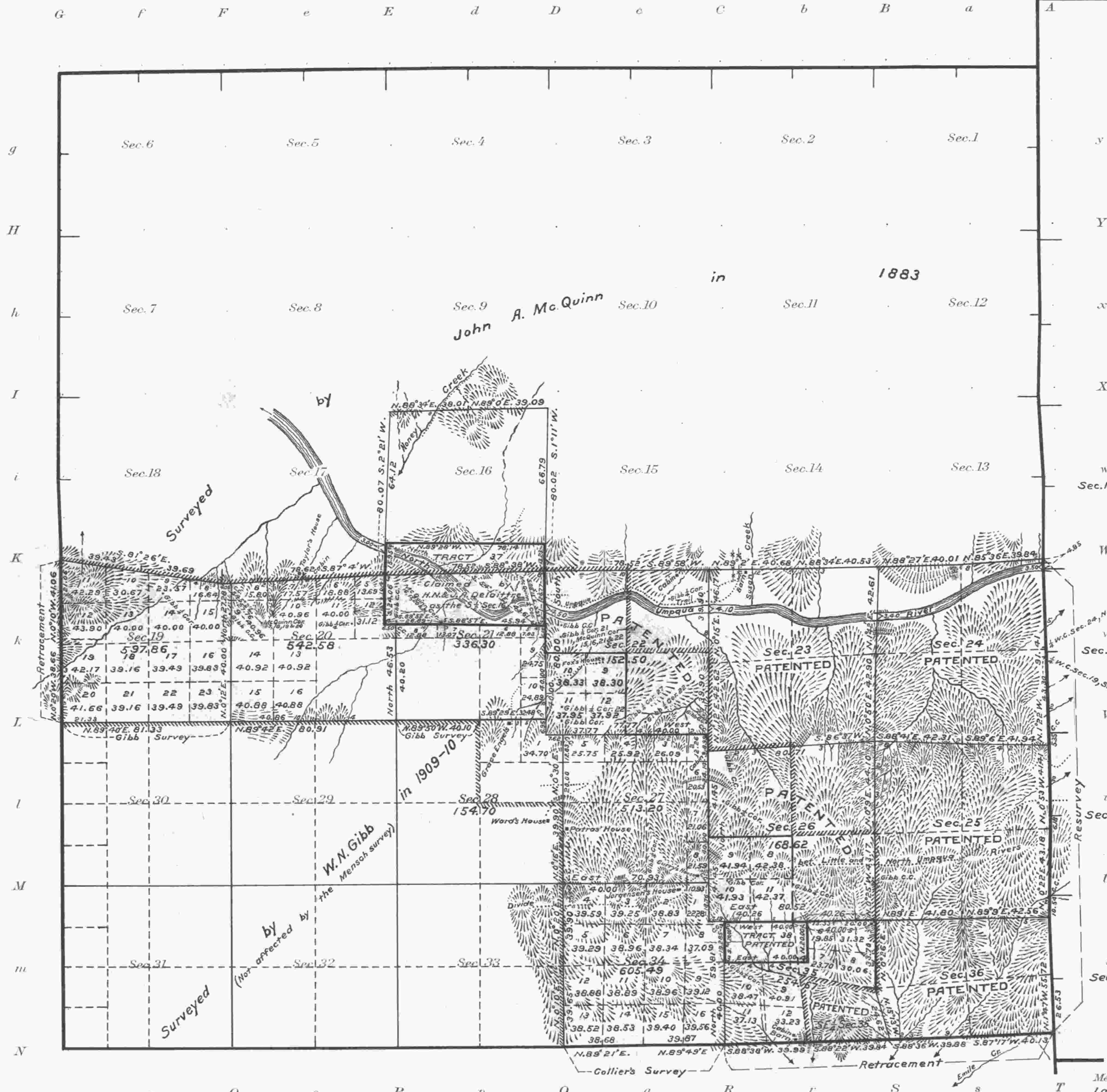


Township No. 26 South Range No. 2 West of the Willamette Meridian, Oregon.



Tract 38 represents the position of the tract patented to the Northern Pacific R.R. Company as the N $\frac{1}{2}$ NW $\frac{1}{4}$ Section 35 T. 26 S., R. 2 W.

With reference to Tract 37 See office letter 'E' dated March 21, 1918 (187896)

	Acres
Area of Sec. 16 exclusive of conflict with Tract 37	508.31
Area of Tract 37 conflicting with Sec. 16 (Tract 37A)	114.18
Area of Tract 37 exclusive of conflict with Sec. 16 (Tract 37B)	198.64

Lots 1, 2, 3 and 4 Section 21 shown on the plat approved October 17, 1911 and included in Power Site Reserve No. 280, are substantially covered respectively by lots 5, 6, 7 and 8 as shown hereon except in the case of lot 5 whose latitudinal extent is somewhat reduced.

Areas in Acres	
Public Land	3325.92
Indian Reservation	
Indian Allotments	
Mineral Claims	
Water Surface	
Total Area	

Scale 40 Chains to an inch
 Mean Magnetic Declination 20°30'E.
 Latitude 43°15'N.
 Longitude 122°52'W.

Surveys Designated	By Whom Surveyed	Group No.	Date of Instructions	Amount of Surveys			When Surveyed	
				Mls.	chs.	lks.	Begun	Completed
Retracements, Exterior lines	Fred Mensch	16	May 25, 1916 April 16, 1918	2	79	56	July 3, 1916	Oct. 20, 1916
Resurveys, " "	" "	" "	" "	(See Plat T. 26 S., R. 1 W.)			Oct. 7, "	Nov. 1, "
Subdivisions	" "	" "	" "	30	70	62	July 5, 1916	July 24, 1918
Connections	" "	" "	" "	7	42	86	" "	" "
Tp. and Sub. lines	John A. McQuinn	under Contract	No.	466	in	1883		
" " "	William N. Gibb	" "	" "	783	" "	1909-10		
West Bdy.	Addison R. Flint	" "	" "	56	" "	1855		
South "	Samuel C. Flint	" "	" "	459	" "	1882		
E.C.T. Revision Survey Exterior lines	Charles M. Collier Group	No. 16	* Special Instructions dated May 12				Sept. 23, 1913	

The above map of Township No. 26 South Range No. 2 West of the Willamette Meridian Oregon is strictly conformable to the field notes of the survey thereof on file in this office, which have been examined and approved.

U. S. Surveyor General's Office.
 Portland, Oregon, January 4, 1919

Edward J. South
 Surveyor General.