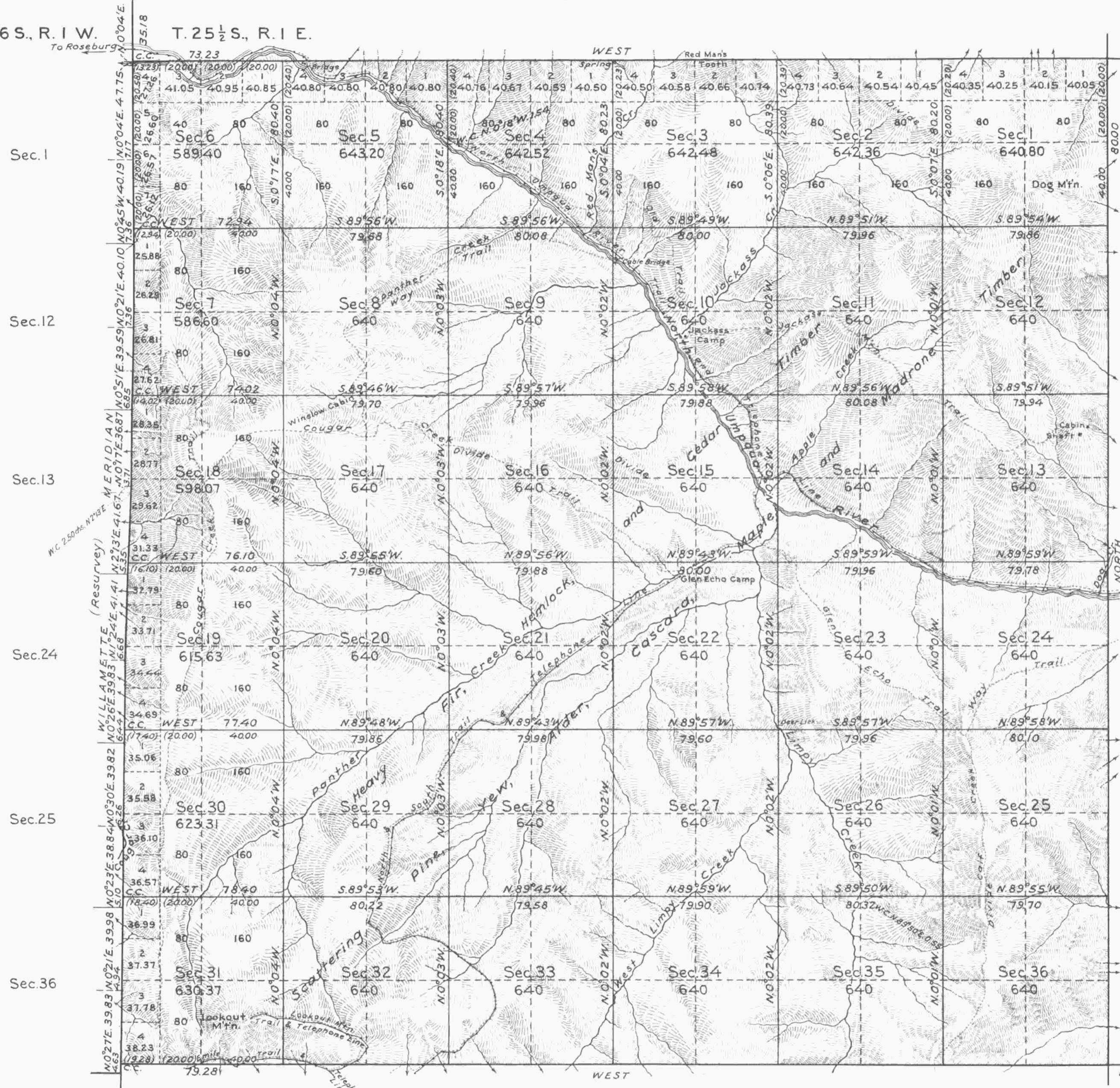


# TOWNSHIP NO. 26 SOUTH, RANGE NO. 1 EAST, OF THE WILLAMETTE MERIDIAN, OREGON.

T. 26 S., R. 1 W. T. 25 1/2 S., R. 1 E.



Latitude 43°15'N.  
Longitude 122°39'W.

Mean Magnetic Declination, 21°30'E. Scale: 40 Chains to an Inch. Area Surveyed, 22,854.74 Acres.

LINES DESIGNATED	BY WHOM SURVEYED	No	GROUP DATE	MILEAGE		WHEN SURVEYED	
				MLS	CHS	BEGUN	COMPLETED
Exterior	Otto L. Draper	63	Dec. 24, 1920	17	79.11	July 11, 1928	Oct. 26, 1928
Subdivisional				59	58.06	" 9 "	" 22, "
Meander							
Miscellaneous					78.85	" 10, "	" " "

Office of U.S. Supervisor of Surveys  
 Denver, Colorado, Dec. 3, 1929.  
 The above plat of Township No. 26 South, Range No. 1 East, of the Willamette Meridian, Oregon, is strictly conformable to the field notes of the survey thereof which have been examined and approved.

*Quinn Brown*  
 U.S. Supervisor of Surveys

DEPARTMENT OF THE INTERIOR  
 GENERAL LAND OFFICE  
 Washington, D.C., January 27, 1930.  
 The survey represented by this plat having been correctly executed in accordance with the requirements of law and the regulations of this office, is hereby accepted.

*W. H. Cottrell*  
 Assistant Commissioner