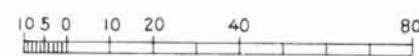
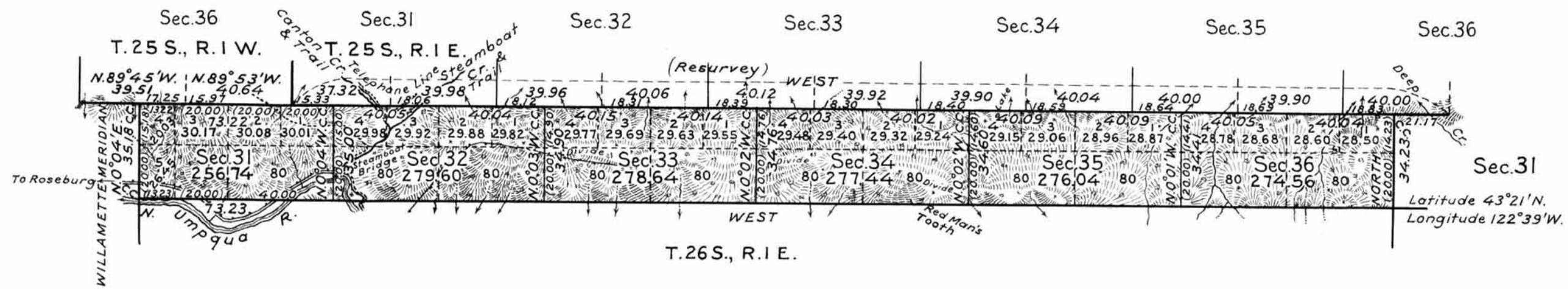


TOWNSHIP N<sup>o</sup> 25½ SOUTH, RANGE N<sup>o</sup> 1 EAST, OF THE WILLAMETTE MERIDIAN, OREGON.



Mean Magnetic Declination, 21°30'E. Scale: 40 Chains to an Inch. Area Surveyed, 1643.02 Acres.

LINES DESIGNATED	BY WHOM SURVEYED	GROUP NO	DATE	MILEAGE		WHEN SURVEYED	
				MLS	CHS	BEGUN	COMPLETED
Exterior	Otto L. Draper	74	March 12, 1921	6	71.58	Aug 30, 1928	Oct. 25, 1928
Subdivisional				2	13.67	Sept 6, "	" 23, "
Meander							
Miscellaneous				1	27.71	Aug 30, "	" " "

Office of U.S. Supervisor of Surveys  
 Denver, Colorado, Dec. 3, 1929.  
 The above plat of Township No. 25½ South, Range No. 1 East, of the Willamette Meridian, Oregon, is strictly conformable to the field notes of the survey thereof which have been examined and approved.

*Wm. H. Dimon*  
 U.S. Supervisor of Surveys.

DEPARTMENT OF THE INTERIOR  
 GENERAL LAND OFFICE  
 Washington, D.C., January 24, 1930.  
 The survey represented by this plat having been correctly executed in accordance with the requirements of law and the regulations of this office, is hereby accepted.

*Wm. C. Havell*  
 Assistant Commissioner

298  
 1930