

FILED

Date: 11/18/2011 By: JC
This survey consists of:
Map: THIS PLAT
Narrative: WITH A COPY IN
Corner Rpt: VOL 57 PG 22688

TOWNSHIP 25 SOUTH, RANGE 8 WEST, OF THE WILLAMETTE MERIDIAN, OREGON

RETRACEMENT

This plat represents the entire survey record of the retracement of a portion of the subdivisional lines, T. 25 S., R. 8 W., Willamette Meridian, Oregon.

The history of surveys pertaining to this retracement is as follows:

In 1881, Samuel C. and Addison R. Flint, U.S. Deputy Surveyors, surveyed the south and east boundary, and a portion of the subdivisional lines.

In 1911, Morris Wygant, Compassman, completed the survey of the subdivisional lines.

In 1964-65, Donald R. Beck and James M. Jelley, Cadastral Surveyors, resurveyed a portion of the east boundary and a portion of the subdivisional lines.

In 1989, Dale T. Bedell, Cadastral Surveyor, resurveyed a portion of the subdivisional lines and subdivided sections 10 and 15.

The survey was executed in accordance with the specification set forth in the Manual of Surveying Instructions, 1973. The retracement data were thoroughly verified and only the true line data is given hereon. Only those lines bounding or crossing public lands were blazed. The directions of the lines were determined by direct solar observation, carried forward by sustained angulation, and refer to the true meridian.

An analysis of the unadjusted field data assured a closure not exceeding 1:4000 in error. The measured distance and direction have been adjusted by computer software that incorporates a least squares adjustment routine. The adjusted bearings and distances are reported to the nearest second and 0.01 foot.

The geodetic position shown hereon was determined by differentially corrected mapping grade GPS receiver relative to the National Spatial Reference System.

Each new bearing tree has a 2 1/2 inch x 1/4 inch magnetic nail (Mag Nail) driven at the base on right side center, unless otherwise noted in the corner description.

Official lot designations and areas are as shown on the plat approved July 12, 1966.

This retracement was executed by Timothy J. Moore, Cadastral Surveyor, and Robert H. Browning, Surveying Technician, beginning May 16, 2006 and completed May 17, 2006; pursuant to Assignment Instructions dated May 8, 2006, under Special Instructions for Group Number 2000, Oregon, dated and approved February 22, 2002; and Assignment Instructions dated May 8, 2006, under Special Instructions for Group Number 2100, Oregon, dated and approved March 8, 2004; and Instructions to Cancel Group 2100 and Reassign to Group 2300, dated October 12, 2007, under Group Number 2300, Oregon, Administrative File Number O606, dated March 16, 2007, approved March 21, 2007.

UNITED STATES DEPARTMENT OF THE INTERIOR
BUREAU OF LAND MANAGEMENT

Portland, Oregon

The retracement represented by this plat, having been correctly executed in accordance with the requirements of law and the regulations of this Bureau, is hereby accepted.

For the Director

Mary J. M. Henthel

Chief Cadastral Surveyor of Oregon

September 6, 2011
Date

DOUGLAS COUNTY
SURVEYOR



(A) Described by Dale T. Bedell in 1989.

Latitude 43°22'57.8"N.
Longitude 123°37'30.5"W.
(NAD 1983 Differentially Corrected Resource Grade Position)

(B) The 1/4 sec. cor. of secs. 22 and 23, monumented with an iron post, 2 1/2 ins. diam., firmly set, projecting 8 ins. above ground, with brass cap mkd.

T25S R8W
1/4
S22 | S23
1965

from which the remains of an original bearing tree

A sawed fir stump, 34 ins. diam., bears N. 67° E., 7.9 ft. dist., with no marks visible.

and the remains of a bearing tree mkd. by Beck and Jelley

A decayed fir stump, size indeterminate, bears N. 38° E., 15.8 ft. dist., with no marks visible.

and new bearing trees

A fir, 7 ins. diam., bears N. 79 1/2° E., 28.4 ft. dist., mkd. 1/4 S23 BT.

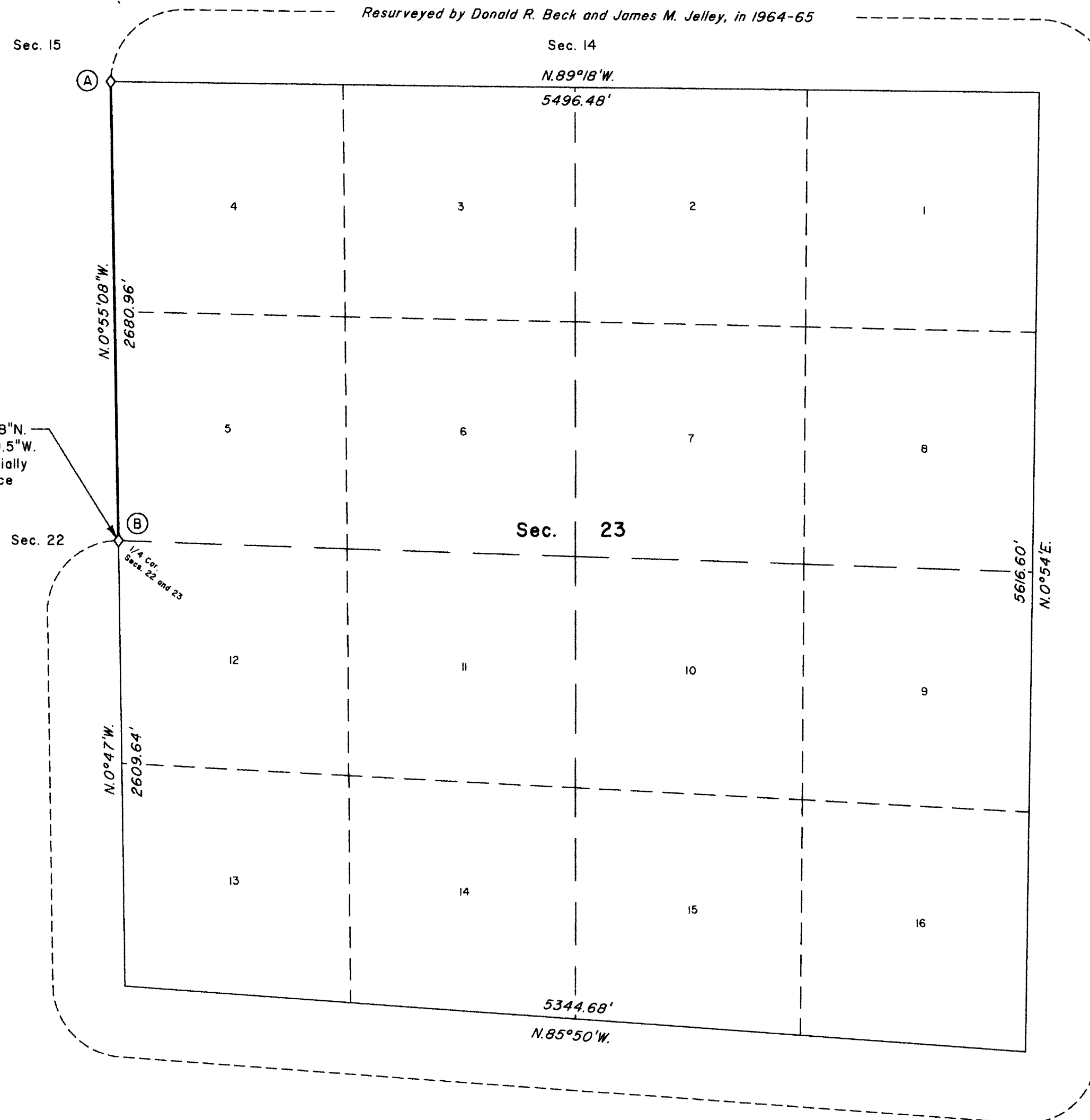
A fir, 21 ins. diam., bears S. 25 1/4° W., 9.5 ft. dist., mkd. 1/4 S22 BT.

We, Timothy J. Moore, Cadastral Surveyor, and Robert H. Browning, Surveying Technician, HEREBY CERTIFY upon honor, that in pursuance of Special Instructions bearing dates of the 22nd day of February, 2002, the 8th day of March, 2004, and the 16th day of March, 2007, we have retraced a portion of the subdivisional lines, Township 25 South, Range 8 West, Willamette Meridian, Oregon. Said retracement has been executed in strict conformity with said Special Instructions, the Manual of Instructions for the Survey of the Public Lands of the United States, 1973, and in specific manner described on this plat.

Timothy J. Moore
Cadastral Surveyor
Robert H. Browning
Surveying Technician

August 25, 2011
Date

8/25/2011
Date



LEGEND
◇ Original corner previously remonumented

