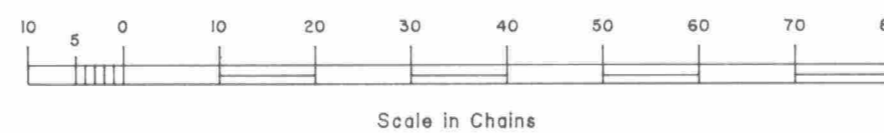
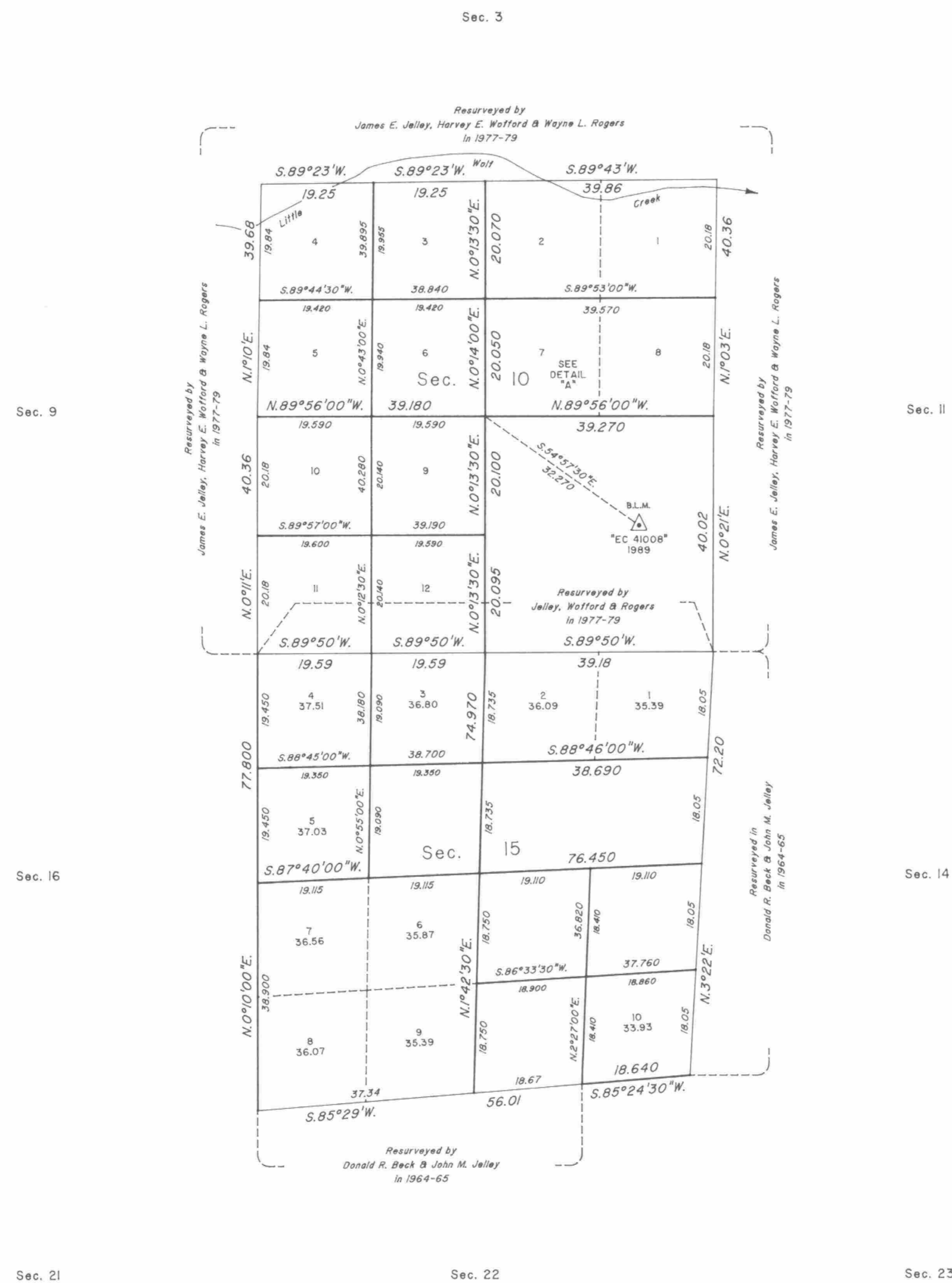
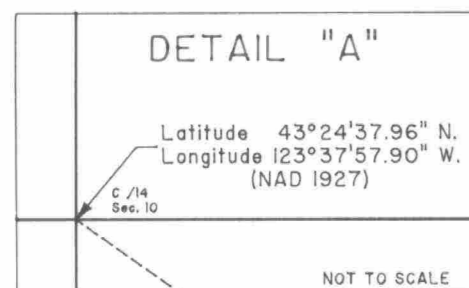
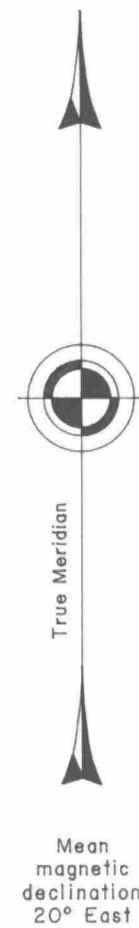


# TOWNSHIP 25 SOUTH, RANGE 8 WEST, OF THE WILLAMETTE MERIDIAN, OREGON

## DEPENDENT RESURVEY AND SUBDIVISION OF SECTIONS



A history of surveys is contained in the field notes.

This plat represents a dependent resurvey of a portion of the subdivisional lines, T. 25 S., R. 8 W., Willamette Meridian, Oregon, designed to restore the corners in their true original locations according to the best available evidence, and the subdivision of sections 10 and 15.

Except as shown hereon, the lottings and areas are as shown on the plats approved January 14, 1882 and April 26, 1913, and the plat accepted December 3, 1981.

The survey was executed by Dale T. Bedell, Cadastral Surveyor, beginning May 31, 1989, and completed September 28, 1989, pursuant to Special Instructions dated March 29, 1989, under Group Number 1487, Oregon.

Timber in this area consists of fir, cedar, hemlock, yew, pine, alder, cherry, maple, oak, madrone, willow, ash and chinquapin.

UNITED STATES DEPARTMENT OF THE INTERIOR  
BUREAU OF LAND MANAGEMENT

Portland, Oregon September 30, 1992

This plat is strictly conformable to the approved field notes, and the survey, having been correctly executed in accordance with the requirements of law and the regulations of this Bureau, is hereby accepted.

For the Director

Chief Cadastral Surveyor of Oregon