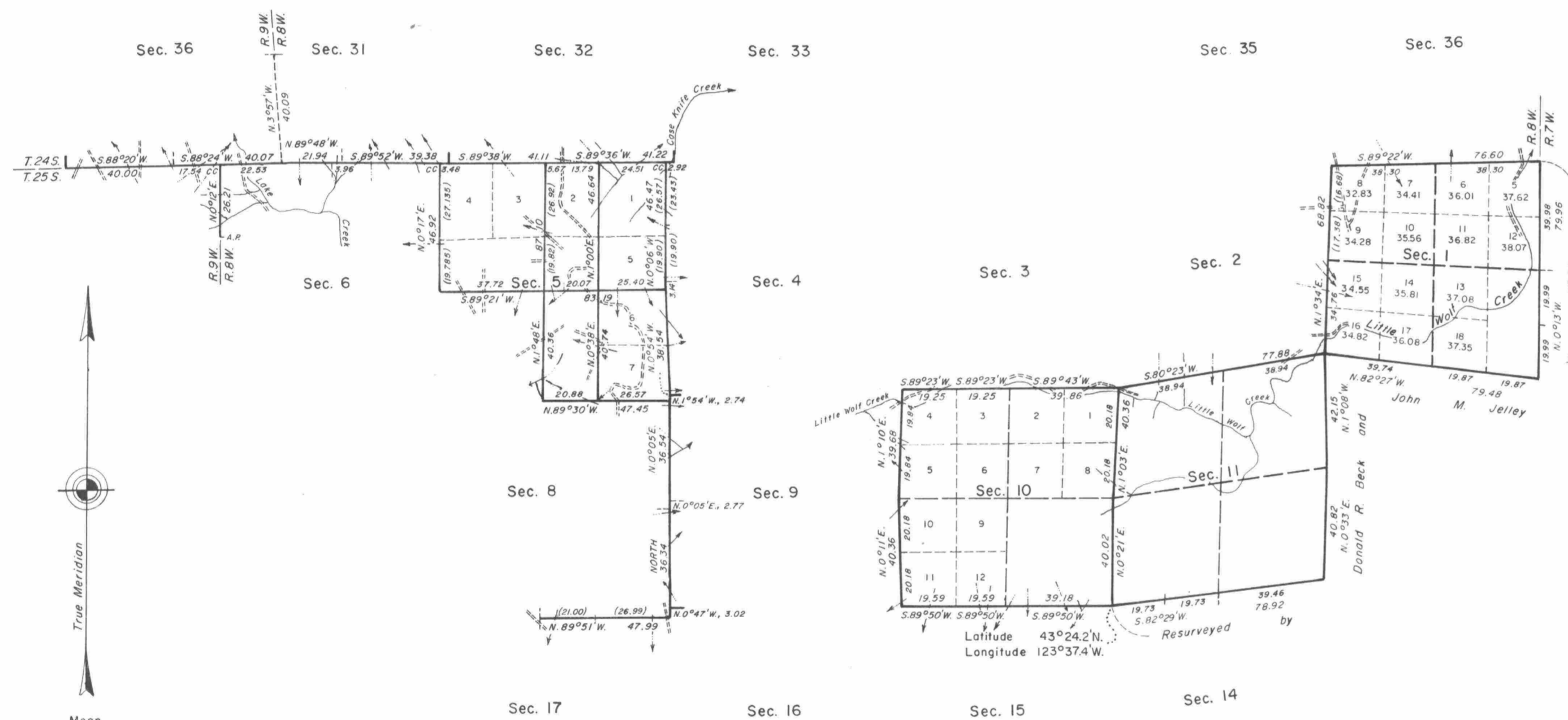


# TOWNSHIP 25 SOUTH, RANGE 8 WEST, OF THE WILLAMETTE MERIDIAN, OREGON.

## DEPENDENT RESURVEY AND SUBDIVISION OF SECTION 5



A history of surveys is contained in the field notes.

This plat represents the dependent resurvey of a portion of the south boundary, T. 24 S., R. 8 W. and a portion of the south boundary, T. 24 S., R. 9 W.; a portion of the west boundary and subdivisional lines designed to restore the corners in their true original locations according to the best available evidence, and the subdivision of sec. 5, T. 25 S., R. 8 W., Willamette Meridian, Oregon.

Except as indicated hereon, the lottings and areas are as shown on the plats approved January 14, 1882, and April 26, 1913.

Survey executed by James E. Jelley, Harvey E. Wofford, and Wayne L. Rogers, Cadastral Surveyors, beginning August 8, 1977, and completed April 10, 1979, pursuant to Special Instructions dated February 10, 1977, and Special Instructions dated May 12, 1978, and Supplemental Special Instructions dated October 12, 1978, for Group Numbers 926 and 958 Oregon.

UNITED STATES DEPARTMENT OF THE INTERIOR  
BUREAU OF LAND MANAGEMENT  
Denver, Colorado December 3, 1981

This plat is strictly conformable to the approved field notes, and the survey, having been correctly executed in accordance with the requirements of law and the regulations of this Bureau, is hereby accepted.

For the Director

*Gary S. Spright*

Acting Chief, Cadastral Survey  
Examination and Approval Staff

Timber in this area consists of fir, cedar, hemlock, and alder with lesser stands of madrone, yew, chinquapin, dogwood, and myrtle.

