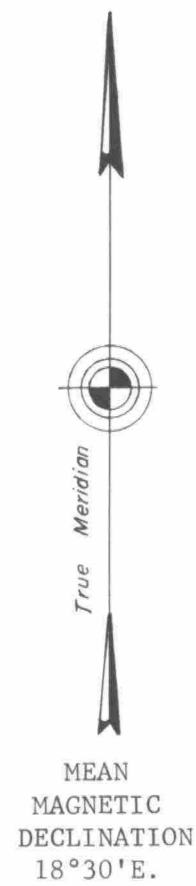
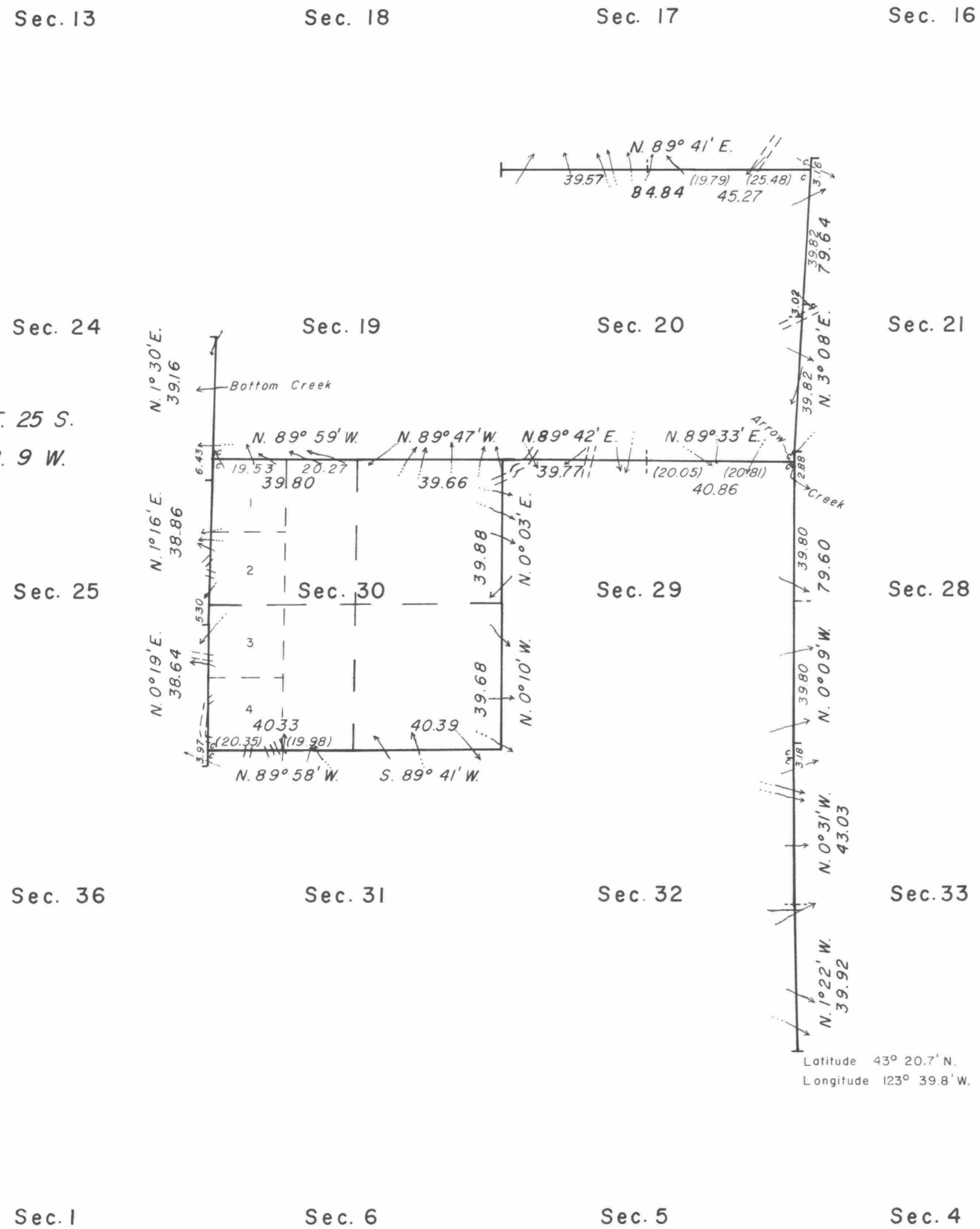


TOWNSHIP 25 SOUTH, RANGE 8 WEST, OF THE WILLAMETTE MERIDIAN, OREGON.
DEPENDENT RESURVEY



This plat represents a retracement and re-establishment of a portion of the east boundary, T. 25 S., R. 9 W., and a portion of the subdivisional lines, T. 25 S., R. 8 W., Willamette Meridian, Oregon, designed to restore the corners in their true original locations according to the best available evidence.

The lottings and areas are as shown on the plat approved April 26, 1913.

The south boundary of the township and a portion of the subdivisional lines were surveyed by Addison R. Flint and Samuel C. Flint, in 1881.

The east boundary of T. 25 S., R. 9 W., was surveyed by Charles L. Campbell, in 1902.

The east boundary of T. 25 S., R. 9 W., and a portion of the south boundary and subdivisional lines were retraced by Morris Wygant, compassman for Z. M. Derrick, in 1911. During the course of the survey, Wygant established closing corners at points of intersection with the east boundary of T. 25 S., R. 9 W., and with some of the subdivisional lines.

The resurvey was executed by James E. Jelley and Jack W. Bowder, Cadastral Surveyors, from April 10, 1972 to May 15, 1972, under Special Instructions dated March 21, 1972 which provide for the surveys under Group No. 767, Oregon.

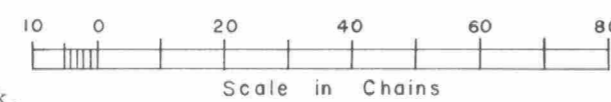
UNITED STATES DEPARTMENT OF THE INTERIOR
BUREAU OF LAND MANAGEMENT
Washington, D.C. January 5, 1977

This plat is strictly conformable to the approved field notes, and the survey, having been correctly executed in accordance with the requirements of law and the regulations of this Bureau, is hereby accepted.

For the Director

Acting Chief, Division of Cadastral Survey

Latitude 43° 20.7' N.
Longitude 123° 39.8' W.



Timber in this area consists of fir, hemlock, cedar, oak, maple, alder, chinquapin, and madrone.

L.P.B.(W.O.)