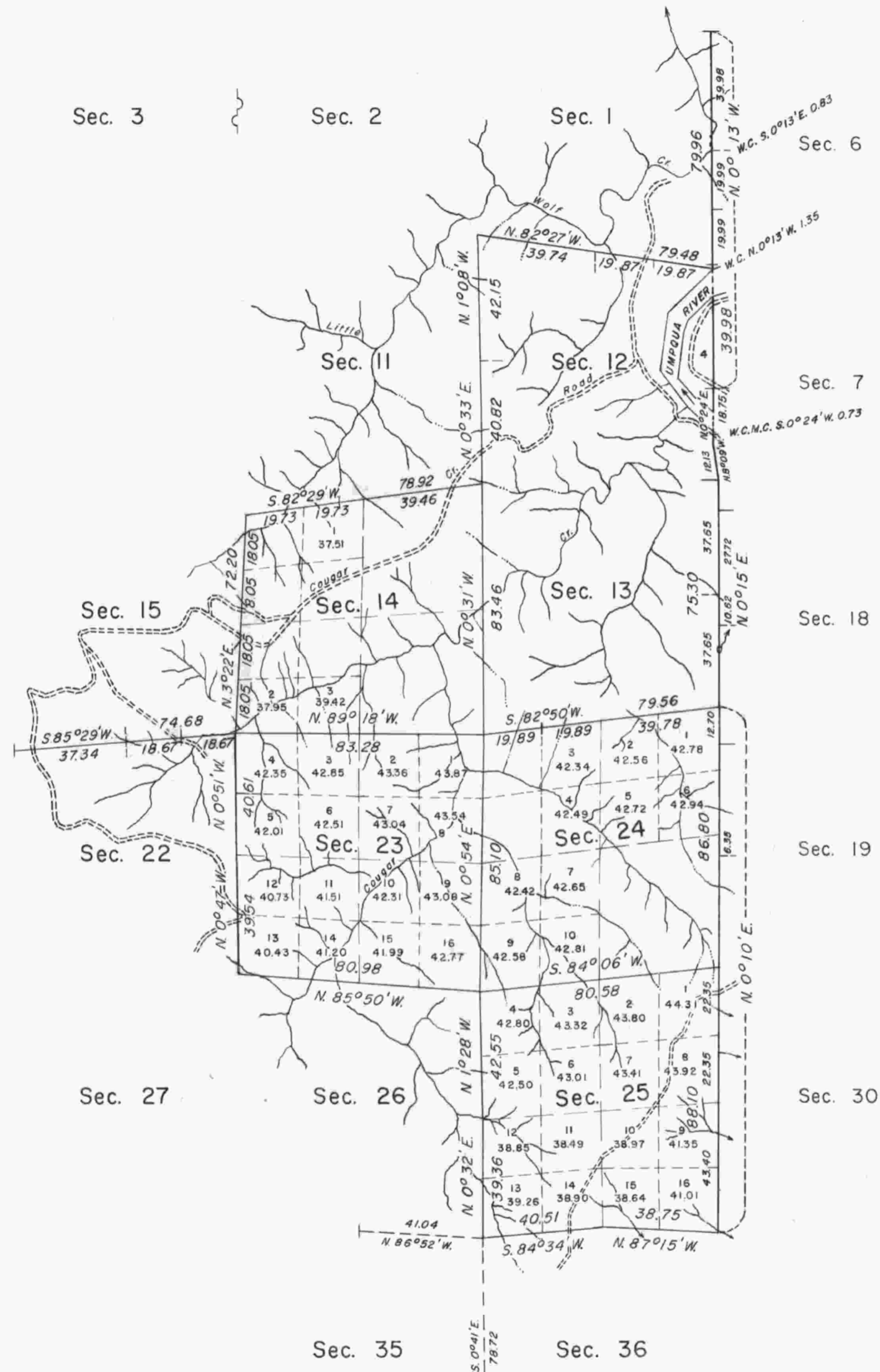


TOWNSHIP 25 SOUTH, RANGE 8 WEST, OF THE WILLAMETTE MERIDIAN, OREGON.

DEPENDENT RESURVEY AND REMONUMENTATION

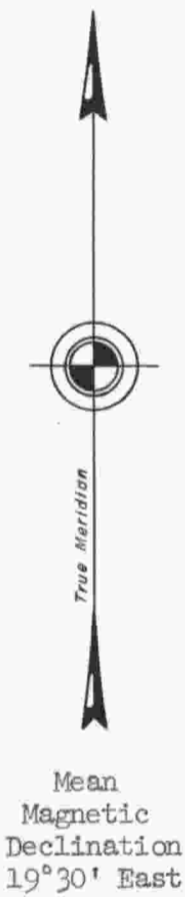


This plat represents a retracement and reestablishment of a portion of the subdivisional lines and remonumentation of certain original corner points, designed to restore the corners in their true original locations according to the best available evidence. Excepting as new or modified vacant subdivisions are shown hereon, the lottings and areas are as shown on the plat approved January 14, 1882.

Samuel C. and Addison R. Flint surveyed the south boundary and a portion of the subdivisional lines in 1881. In 1911, Morris Wygant surveyed a portion of these lines. The east boundary was resurveyed concurrently with T. 25 S., R. 7 W.

These surveys executed by Donald R. Beck and John M. Jelley, September 10, 1964, to July 6, 1965, under Special Instructions dated May 3, 1957, and August 13, 1964, which provide for the surveys included under Group Nos. 350 and 563, Oregon, respectively.

Remonumentation under Group No. 350 in 1965.



Timber in this area consists of Douglas fir, fir, cedar, hemlock, madrone, maple, alder, dogwood, chinquapin, live oak, myrtle, and yew.

UNITED STATES DEPARTMENT OF THE INTERIOR
BUREAU OF LAND MANAGEMENT
Washington, D. C. July 12, 1966

This plat is strictly conformable to the approved field notes, and the survey, having been correctly executed in accordance with the requirements of law and the regulations of this Bureau, is hereby accepted.

For the Director

E. E. Huntington
Chief, Division of Engineering

Latitude 43° 20.7' N.
Longitude 123° 36.2' W.



Area resurveyed: 2,641.26 Acres