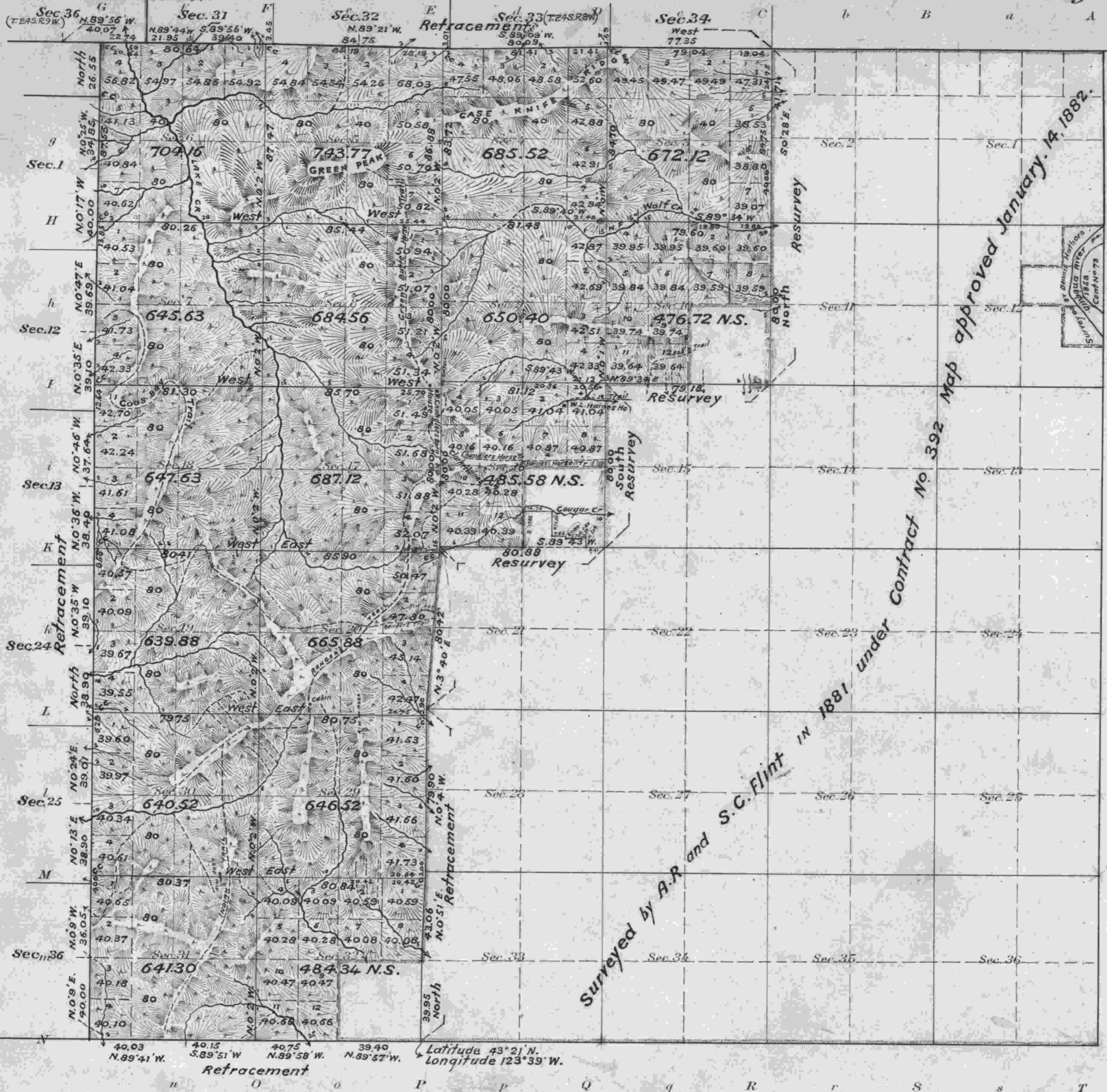


Township No. 25 South Range No. 8 West of the Willamette Meridian, Oregon.



Y  
Y  
X  
X  
W  
W  
V  
V  
U  
U  
T  
T

Cost of surveys;— payable from Special Deposits made by Northern Pacific Railway Co — (See Office letter dated April 26, 1913)

Areas in Acres	
Public Land N.S.	10801.65
Indian Reservation	
Indian Allotments	
Mineral Claims	
Water Surface	
Former Survey	12528.64
<b>Total Area</b>	<b>23330.29</b>

Scale 40 Chains to an inch  
Mean Magnetic Declination 21° 15' E

Surveyed by A.R. and S.C. Flint in 1881 under Contract No. 392 Map approved January 14, 1882.

Surveys Designated	By Whom Surveyed	Contract		Amount of Surveys			When Surveyed	
		No.	Date	Mls.	chs.	lks.	Began	Completed
Subdivisions	Morris Wygant Compass and for Z. M. Derrick	179	Feb. 7, 1908	24	41	97	June 25, 1911	Aug. 12, 1911
Connections (Sub)	"	"	"	3	03	33	July 6	July 8
W. N. and S. Bd. of Tp Retr	"	"	"	5	04	81	June 27	5
Connections	"	"	"	12	32	13	June 17	21
W. Bd. of Tp	C. L. Campbell	747	May 5, 1902	0	22	74	1902	1902
S. Bd. of Tp	A. R. and S. C. Flint	392	" 26, 1881				1881	1881
N. Bd. of Tp	W. H. Byars	292	Aug. 7, 1878				1878	1878
E. Bd. of Secs 25 and 36	Dennis Hathorn	202	Mar. 11, 1874				1874	1874
E. Bd. of Secs 1, 12	"	73	June 8, 1857				1857	1857

The above map of Township No. 25 South Range No. 8 West of the Willamette Meridian Oregon is strictly conformable to the field notes of the survey thereof on file in this office, which have been examined and approved

U. S. Surveyor General's Office.  
Portland, Oregon, April 26, 1913.

*Guaranteed*  
Surveyor General, for Oregon

ACCEPTED BY THE HON. COMMISSIONER G. L. O. July 19, 1913