

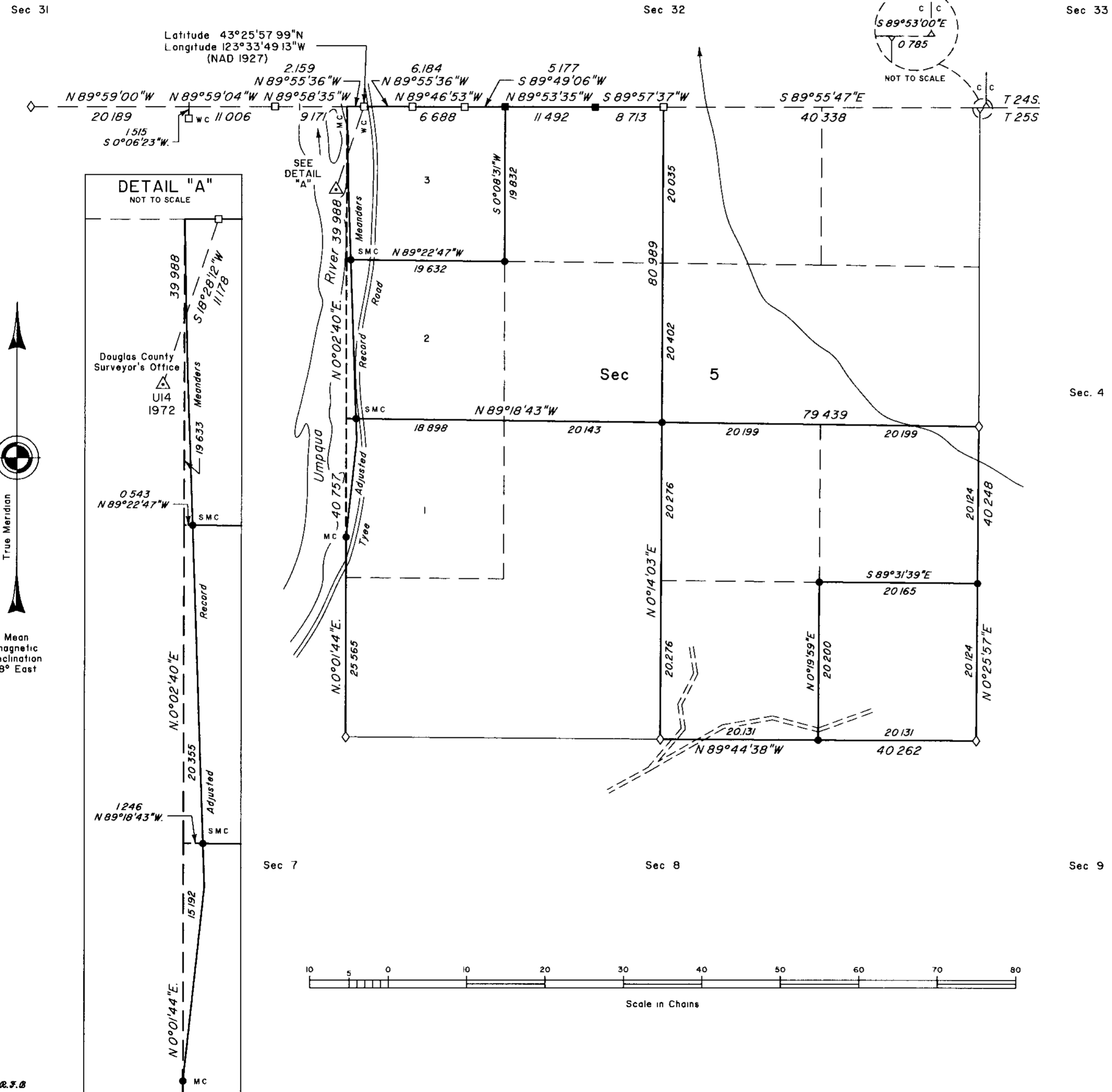
# TOWNSHIP 25 SOUTH, RANGE 7 WEST, OF THE WILLAMETTE MERIDIAN, OREGON

## DEPENDENT RESURVEY AND SUBDIVISION OF SECTION 5

FILED

Date: 1-3-2000 By: [Signature]  
This survey consists of:  
Map  
Narrative: V 53  
Corner Rpt. 192, 20194, 20315

DOUGLAS COUNTY SURVEYOR



A history of surveys is contained in the field notes

This plat represents a dependent resurvey of a portion of the north boundary, subdivisional lines, and adjusted record meanders of the right bank of the Umpqua River, T 25 S, R 7 W, Willamette Meridian, Oregon, designed to restore the corners in their true original locations according to the best available evidence, and the subdivision of section 5

Measured distances and directions have been adjusted by Cadastral Measurement Management (CMM), computer software that incorporates a least squares adjustment routine. The adjusted bearings and distances are reported to the nearest second and 0.001 chain

The lottings and areas are as shown on the plat approved April 24, 1858

The survey was executed by Bryan S Seibold and Wayne L Rogers, Cadastral Surveyors, beginning September 29, 1997, and completed December 17, 1997, pursuant to Special Instructions dated September 9, 1997, under Group Number 1862, Oregon

Timber in this area consists of fir, cedar, hemlock, alder, maple, oak, chinquapin, pine, ash, yew, and madrone

The tie to the geodetic control station is reported as mean bearing and sea level distance

LEGEND

- ◊ Original corner previously remonumented
- ◆ Original corner remonumented this survey
- Corner previously established or reestablished
- Corner previously established or reestablished, remonumented this survey
- Corner established or reestablished this survey

UNITED STATES DEPARTMENT OF THE INTERIOR  
BUREAU OF LAND MANAGEMENT

Portland, Oregon January 5, 2000

This plat is strictly conformable to the approved field notes, and the survey, having been correctly executed in accordance with the requirements of law and the regulations of this Bureau, is hereby accepted

For the Director  
*Wayne L. Rogers*  
Chief Cadastral Surveyor of Oregon