

TOWNSHIP 25 SOUTH, RANGE 7 WEST, OF THE WILLAMETTE MERIDIAN, OREGON

DEPENDENT RESURVEY

FILED
 Date: 8-18-98 By: J.P.
 This survey consists of:
 Map: _____
 Narrative: Vol 52
 Corner Rpt: PGS 20043-67

DOUGLAS COUNTY
 SURVEYOR

A history of surveys is contained in the field notes

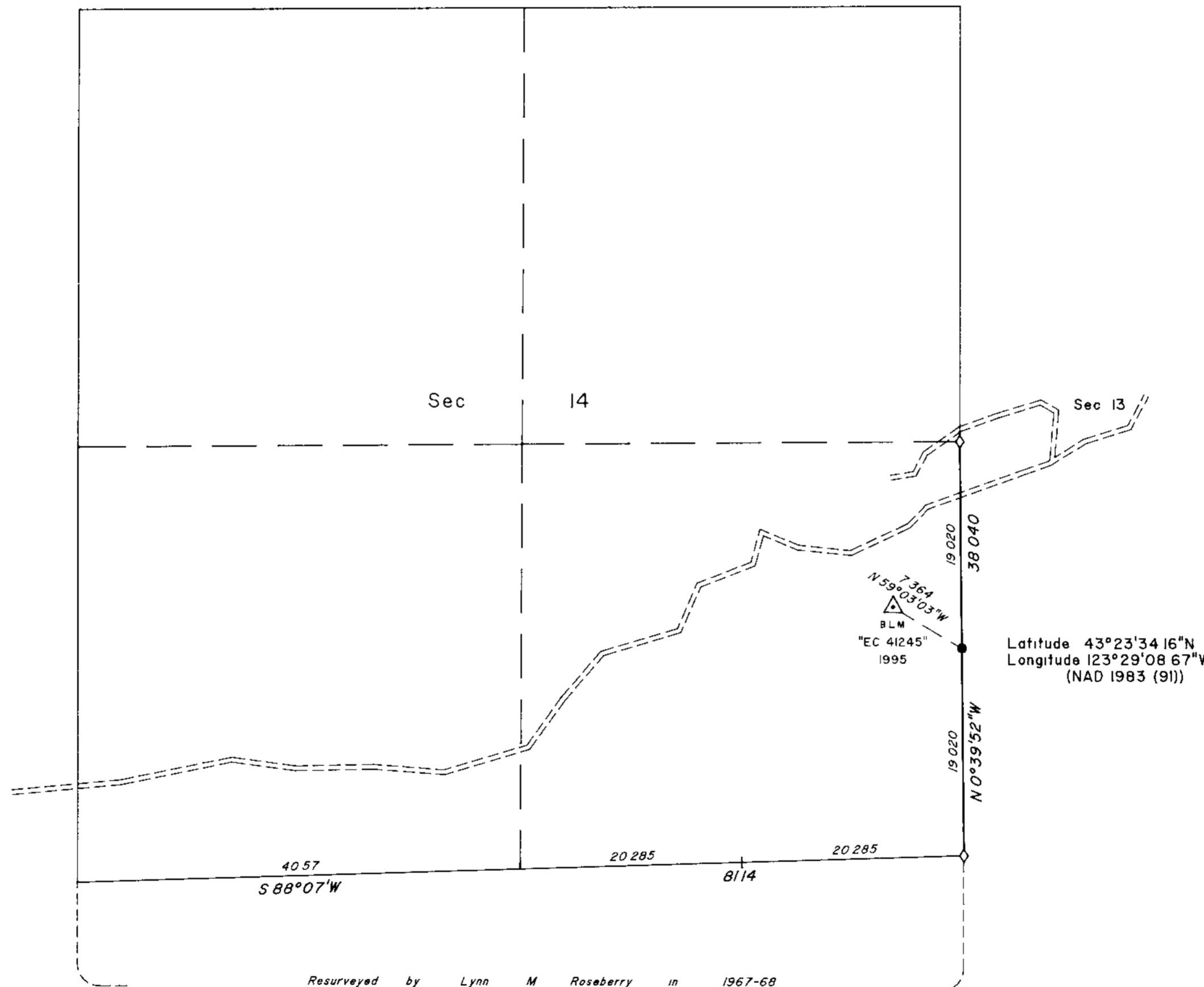
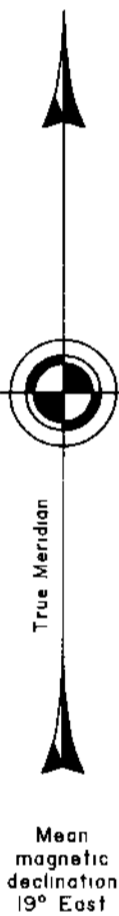
This plat represents a dependent resurvey of the south one-half mile between sections 13 and 14, T 25 S, R 7 W, Willamette Meridian, Oregon, designed to restore the corners in their true original locations according to the best available evidence

Measured distances and directions have been adjusted by Cadastral Measurement Management (CMM), a computer program that incorporates a least squares adjustment routine. The adjusted bearings and distances are reported to the nearest second and 0.001 chain

The survey was executed by Bryan S Seibold, Cadastral Surveyor, and Robert H Browning, Surveying Technician, beginning October 19, 1995, and completed November 6, 1995, pursuant to Special Instructions dated June 30, 1995, under Group Number 1778, Oregon.

Timber in this area consists of fir, cedar, pine and madrone

The tie to the geodetic control station is reported as mean bearing and sea level distance



LEGEND	
◊	Original corner previously remonumented
●	Corner established or reestablished this survey

UNITED STATES DEPARTMENT OF THE INTERIOR
 BUREAU OF LAND MANAGEMENT

Portland, Oregon February 4, 1998

This plat is strictly conformable to the approved field notes, and the survey, having been correctly executed in accordance with the requirements of law and the regulations of this Bureau, is hereby accepted.

For the Director

Wayne M. Gardner

Chief Cadastral Surveyor of Oregon

