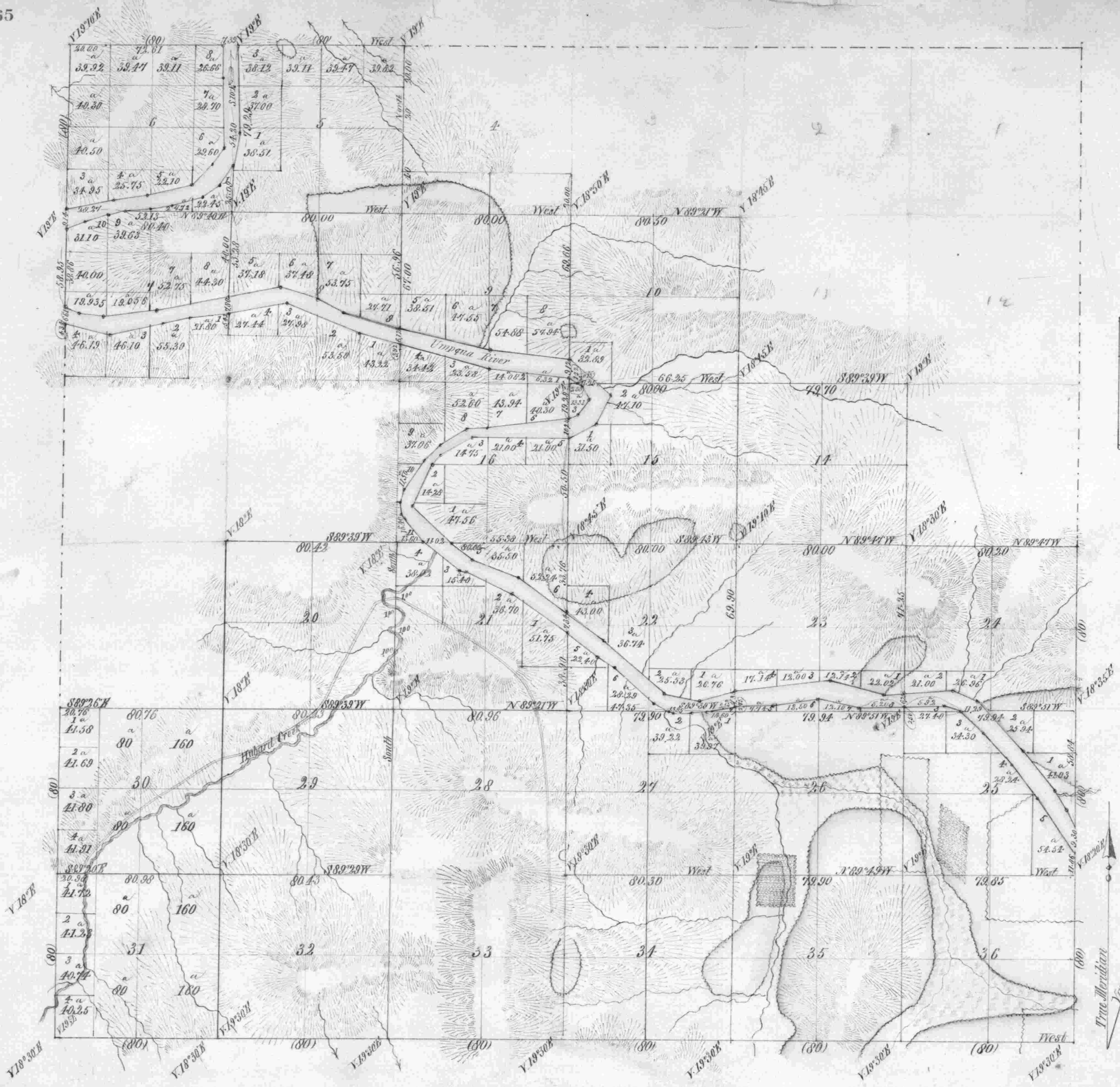


Township 35 South, Range 7 West, Willamette Meridian, Oregon

965

| Area | |
|--------------|-----------------|
| Sections | Acres |
| 20 | 640.00 |
| 21 | 560.00 |
| 28 | 320.00 |
| 29 | 640.00 |
| 30 | 646.98 |
| 31 | 645.94 |
| 32 | 640.00 |
| 33 | 320.00 |
| Total | 4,310.92 |



General Description
 This fractional Township contains a vast amount of good timbered lands. The valley along the creek is about a quarter of a mile wide. First rate agricultural.

| Lines | Contractor | Contract No. | Date | Amount Surveyed Miles Chains Links | Commenced | Completed |
|---------------------------------|--------------------------|----------------|-----------------|---------------------------------------|----------------|----------------|
| Subdivisions | W. H. Byars | 202 | March 11th 1874 | 12 03 48 | June 10th 1874 | June 13th 1874 |
| Blue lines indicate old surveys | | | | | | |
| Extensives | 2 Mills on W | | | | | |
| | 1 W. S. Chs. 25 Lk. on W | Dennis Hathorn | 73 | June 8th 1856 | | |
| | 3 & E. Id. u. | | 63 | March 22d 1856 | | |

The above Map of the subdivisional lines of Township 35 South, Range 7 West Will. Mer. Or is strictly conformable to the original field notes, of the survey thereof on file in this Office which have been examined and approved.
 U.S. Surveyor General's Office
 Portland Oregon August 2^d 1875.

Ben Simpson
 Sur. Gen.