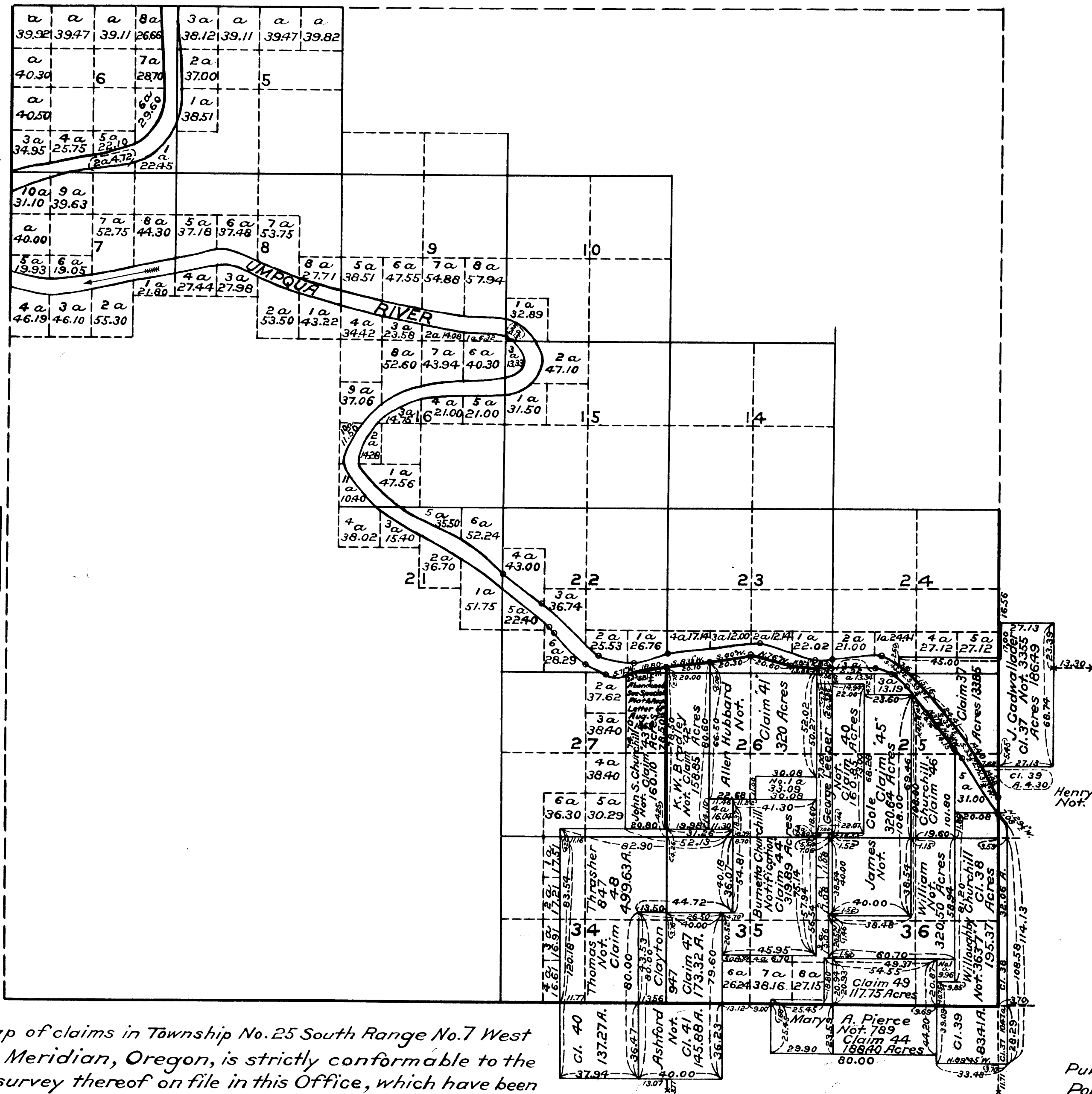


TOWNSHIP N^o 25 SOUTH RANGE N^o 7 WEST WILLAMETTE MERIDIAN OREGON



Aggregate area of Public Land 8,319.66
 " " Private Surveys 2,885.05
 Add error in computations 15.44
 Total return on Township Plat 11,220.15

The above map of claims in Township No. 25 South Range No. 7 West of the Willamette Meridian, Oregon, is strictly conformable to the field notes of the survey thereof on file in this Office, which have been examined and approved.

Surveyor General's Office, O'gn.
 Eugene City, August 1st, 1860

(Signed)
 W. W. Chapman
 Surveyor General of Oregon

I certify the above to be a correct copy of the original plat on file in this office.

Joseph A. Gausman
 Office Cadastral Engineer.

Public Survey Office,
 Portland, Oregon,
 November 20, 1930