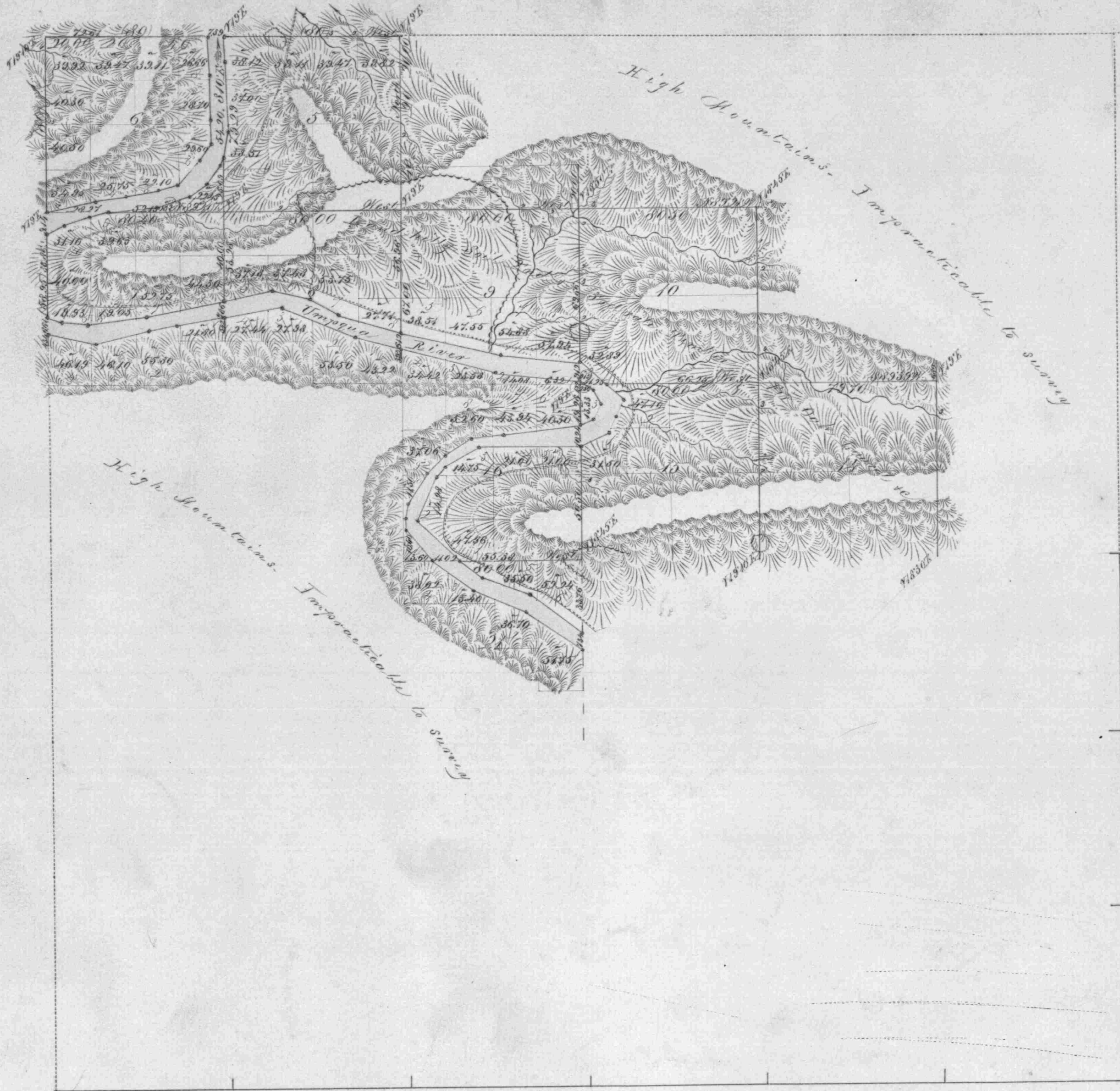


Addenda to Township No 25 South Range No 7 West Willamette Meridian.

962



Surveys designated	By whom surveyed	Contract		Amt of surveys			When surveyed
		No	Date	Mils	chains	links	
Township Lines	Dennis Hathorn	73	June 8th 1857	01	58	35	December 24th 1857
Subdivisions	Dennis Hathorn	73	June 8th 1857	15	66	37	April 24th 1858
Acres	"	"	"	15	42	87	"
Total number of Acres				5655.32			

The above Map of Addenda to Township No 25 South Range No 7 West of the Willamette Meridian, Territory of Oregon is strictly conformable to the field notes of the survey hereof on file in this office which have been examined and approved  
 Surveyor General's Office  
 Salem April 24th 1858.  
 John S. Ziebel,  
 Sur Gen of Ore.