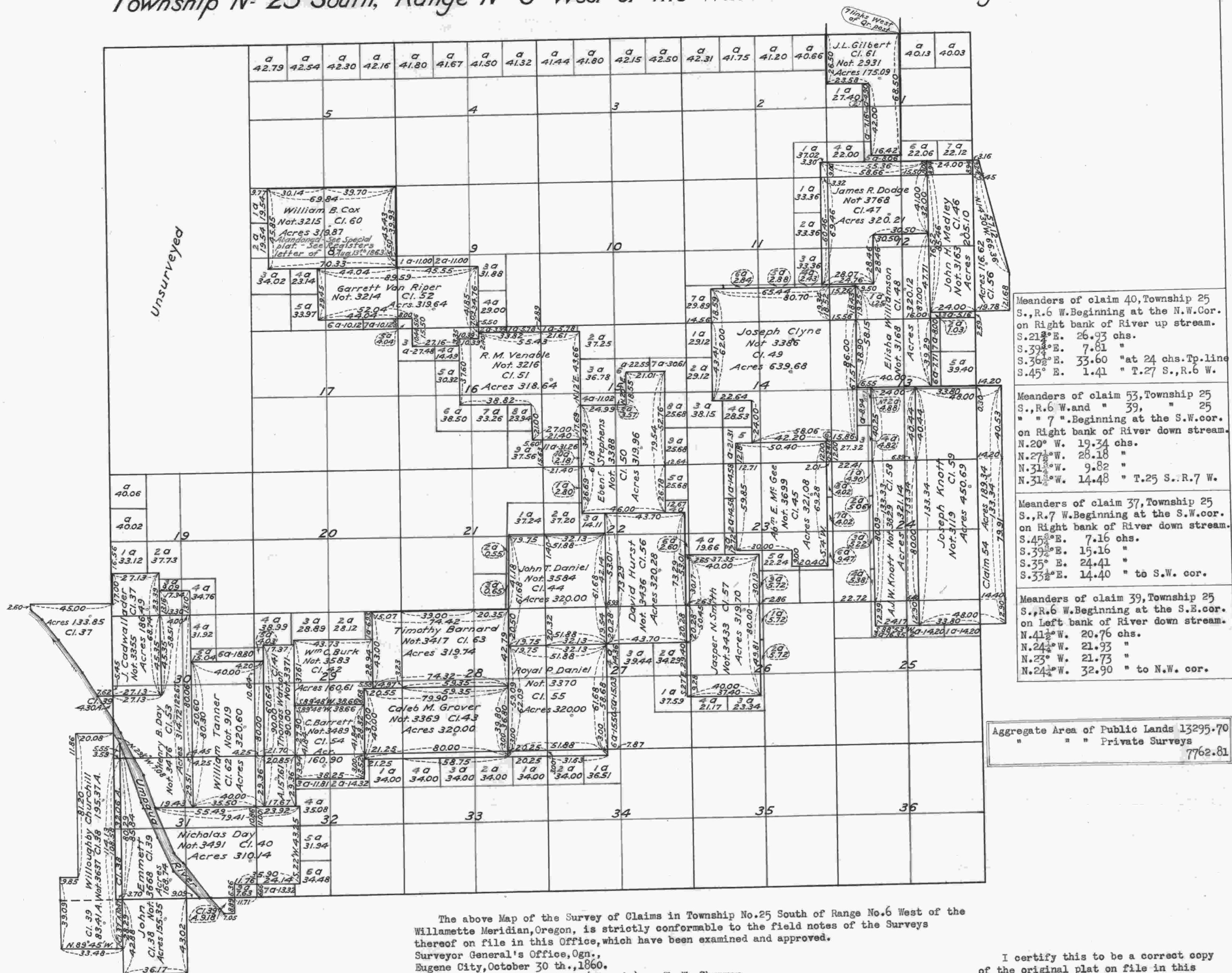


Township No 25 South, Range No 6 West of the Willamette Meridian, Oregon.



(signed) W. W. Chapman.  
Surveyor General of Oregon.

I certify this to be a correct copy  
of the original plat on file in this  
office.  
U.S. Surveyor General's Office,  
Portland Oregon, Nov. 26, 1924.

Wesley M. Carvess  
U.S. Surveyor General of Oregon.