

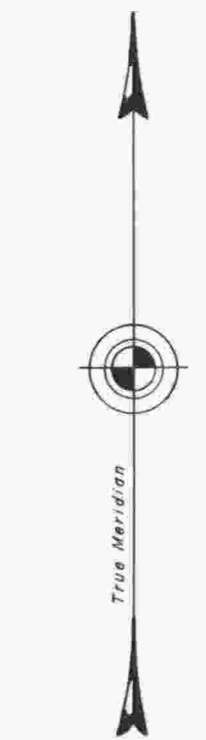
# TOWNSHIP 25 SOUTH, RANGE 5 WEST, OF THE WILLAMETTE MERIDIAN, OREGON.

## DEPENDENT RESURVEY AND SUBDIVISION

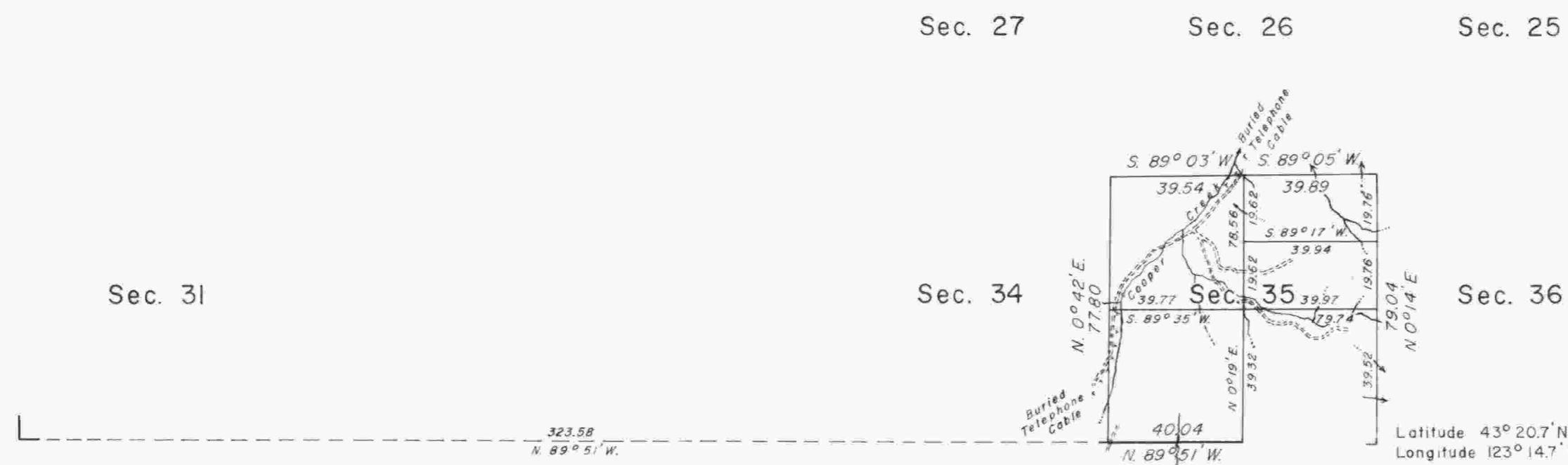
This plat represents a retracement and reestablishment of a portion of the south boundary and a portion of the subdivisional lines designed to restore the corners in their true original locations according to the best available evidence, and the survey of a portion of the subdivisional lines of T. 25 S., R. 5 W., Willamette Meridian, Oregon. The lottings and areas are as shown on the plats approved October 20, 1853, and April 26, 1872.

The south boundary and most of the subdivisional lines were surveyed by Robert Elder and Henry S. Gile, in 1853. The remainder of the subdivisional lines, including section 35, were surveyed by William H. Byars, in 1871.

Dependent resurvey and subdivision of section 35, T. 25 S., R. 5 W., Willamette Meridian, Oregon, executed by C. Albert White and Donald R. Beck, May 3 to May 24, 1963, under Special Instructions dated April 30, 1963, which provide for the surveys included under Group No. 502, Oregon.



Mean  
Magnetic  
Declination  
20°15' East

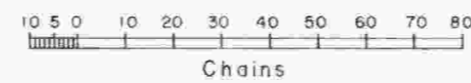


UNITED STATES DEPARTMENT OF THE INTERIOR  
BUREAU OF LAND MANAGEMENT  
Washington, D. C. November 19, 1964

This plat is strictly conformable to the approved field notes, and the survey, having been correctly executed in accordance with the requirements of law and the regulations of this Bureau, is hereby accepted.

For the Director

Chief, Division of Engineering



Area resurveyed: 480 Acres

Timber in this area consists of fir, hemlock, white oak, black oak, madrone, cedar, alder, and yew.