

TOWNSHIP 25 SOUTH, RANGE 5 WEST, OF THE WILLAMETTE MERIDIAN, OREGON.
DEPENDENT RESURVEY AND SUBDIVISION

Sec. 5

Sec. 4

Sec. 3

Sec. 8

Sec. 9

Sec. 10

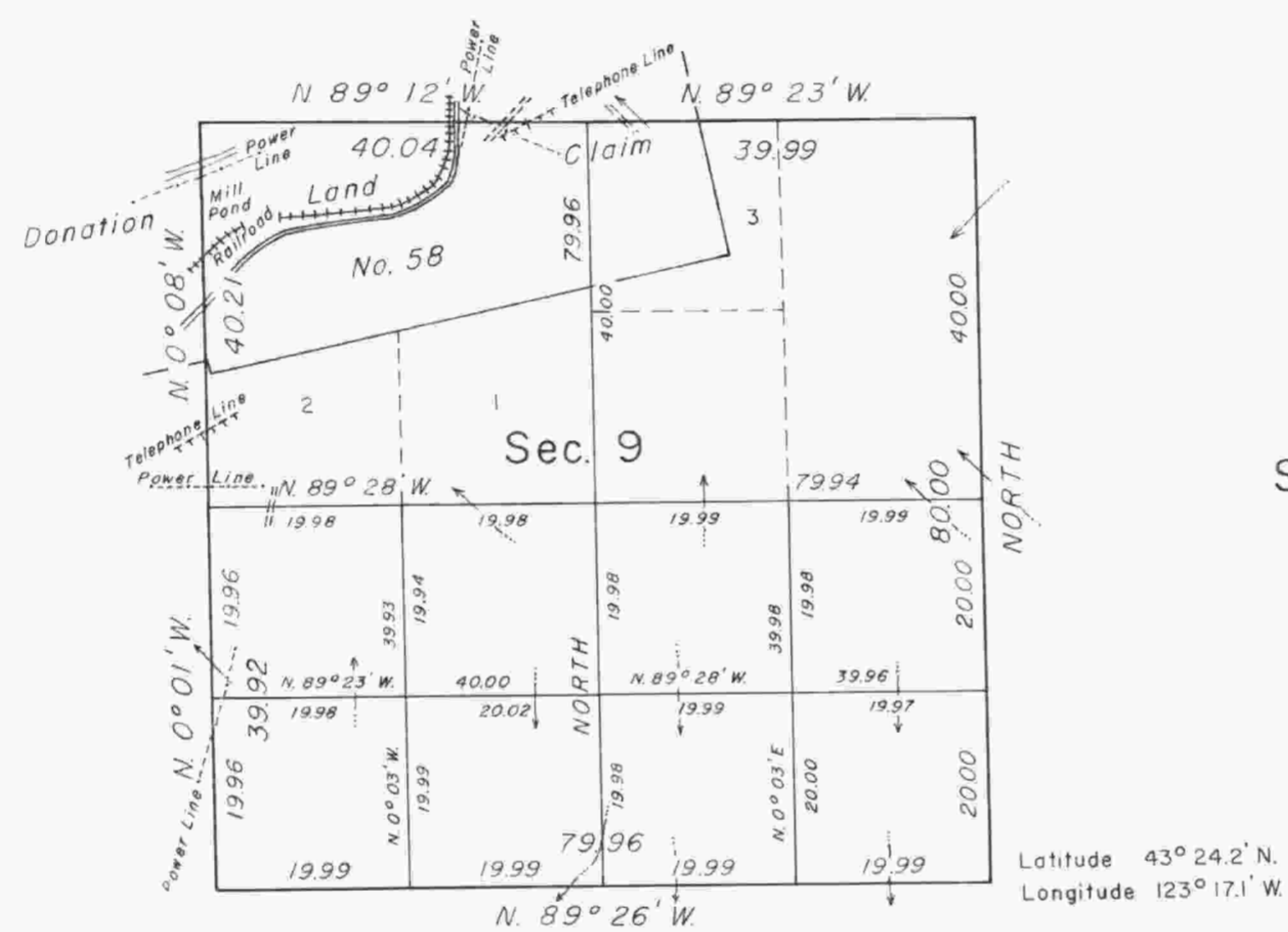
Sec. 17

Sec. 16

Sec. 15



Mean
Magnetic
Declination
20°12' East



This plat represents a retracement and reestablishment of a portion of the subdivisional lines, designed to restore the corners in their true original location according to the best available evidence; and the partial subdivision of section 9, T. 25 S., R. 5 W., Willamette Meridian, Oregon. The lottings and areas are as shown on the plats approved October 20, 1853, and October 30, 1860.

The subdivisional lines were surveyed by Robert Elder and H. S. Gile in 1853.

Dependent resurvey and subdivision of section 9, T. 25 S., R. 5 W., Willamette Meridian, Oregon, executed by Patrick J. Reynolds, beginning July 25, 1962, and completed August 30, 1962, under Special Instructions dated July 6, 1962, which provide for the surveys included under Group No. 476, Oregon.

UNITED STATES DEPARTMENT OF THE INTERIOR
BUREAU OF LAND MANAGEMENT
Washington, D. C. August 14, 1964

This plat is strictly conformable to the approved field notes, and the survey, having been correctly executed in accordance with the requirements of law and the regulations of this Bureau, is hereby accepted.

For the Director

Ed Huntington
Chief, Division of Engineering



Area resurveyed: 640 Acres

Timber in this area consists of fir, oak, cedar, hemlock, madrone, pine, maple, and chinquapin.