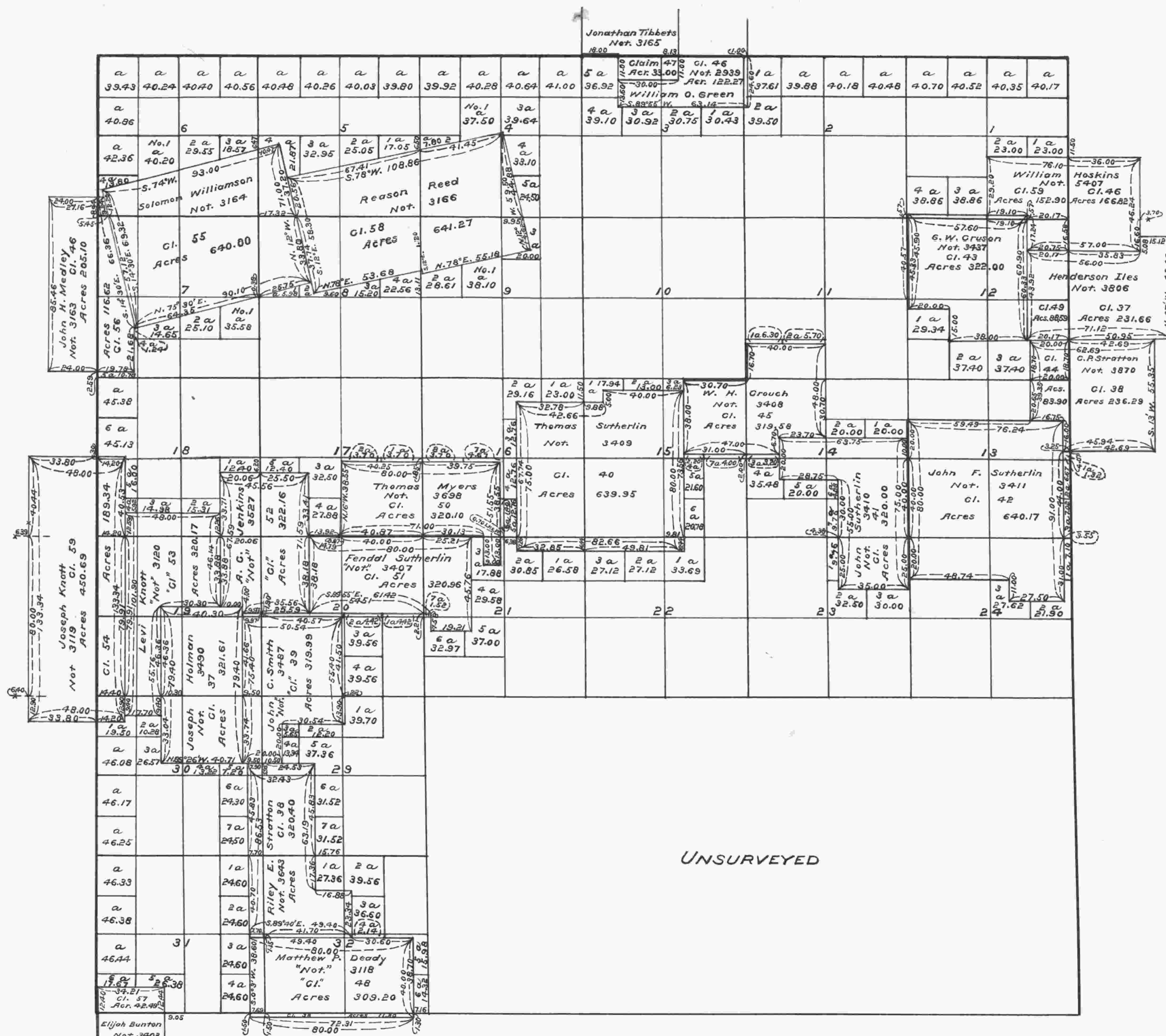


Township N^o 25 South Range N^o 5 West of the Willamette Meridian, Oregon.



Aggregate Area of Public Lands 11106.27
 " " Private Surveys 6906.67

The above Map of the Survey of Claims in Township No. 25 South of Range No. 5 West of the Willamette Meridian Oregon is strictly conformable to the field notes of the surveys thereof on file in this Office, which have been examined and approved.
 Surveyor General's Office, Ogn.
 Eugene City, October 30th., 1860.

(Signed)
 W. W. Chapman
 Surveyor General of Oregon.

I certify this to be a correct copy of the original plat on file in this office.
 District Cadastral Engineer's Office,
 Portland, Oregon, October 31, 1925.
 E. J. Rands
 District Cadastral Engineer.