

FILED

Date: 4/3/2015 By: JC
This survey consists of:
Map: T25-4 2015-1

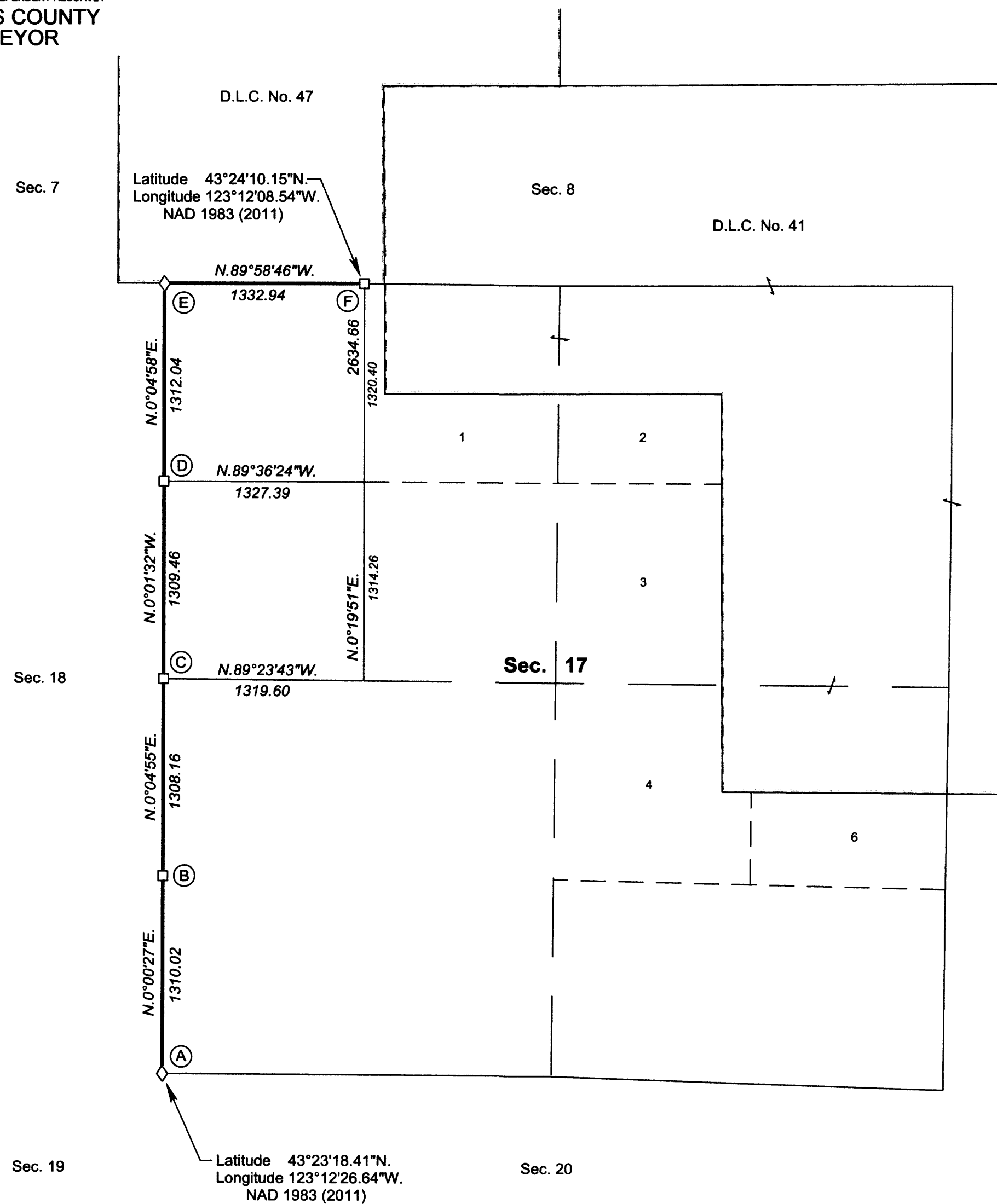
TOWNSHIP 25 SOUTH, RANGE 4 WEST, OF THE WILLAMETTE MERIDIAN, OREGON

SHEET 1 OF 2

Narrative: VOL. 58 PGS 23174-23175
THIS PLAT REPRESENTS THE
ENTIRE RECORD OF THE
DEPENDENT RESURVEY

DEPENDENT RESURVEY

DOUGLAS COUNTY
SURVEYOR



The history of the official surveys pertaining to this survey is as follows:

In 1855, Harvey Gordon and Charles T. Gardner, U.S. Deputy Surveyors, surveyed a portion of the subdivisional lines, as shown on the official plat of survey approved February 20, 1856.

In 1856, Dennis Hathorn, U.S. Deputy Surveyor, surveyed Donation Land Claim Nos. 41 and 47, as shown on the official plat of survey approved March 5, 1862.

In 1871, William H. Byars, U.S. Deputy Surveyor, surveyed the remainder of the subdivisional lines, as shown on the official plat of survey approved April 26, 1872.

In 1957-58, Irving Zirpel, Jr., Lynn M. Roseberry, and Harold D. Corbin, Cadastral Surveyors, resurveyed a portion of the subdivisional lines, as shown on the official plat of survey accepted October 6, 1959.

In 1982, James E. Jelley and Wayne L. Rogers, Cadastral Surveyors, resurveyed a portion of the subdivisional lines, as shown on the official plat of survey accepted August 3, 1984.

In 1995, Wayne L. Rogers and Bryan S. Seibold, Cadastral Surveyors, and Robert H. Browning, Surveying Technician, resurveyed a portion of the subdivisional lines and boundaries of Donation Land Claim No. 41 and subdivided section 17, as shown on the official plat of survey accepted September 1, 1998.

The following local surveys filed in the Douglas County Surveyor's Office are referred to in subsequent corner descriptions and are referenced by surveyor's last name, Professional Land Surveyor (PLS) No., and year.

Date	Name and Registration Number	File Number
1956	Wilford N. Haines, PLS No. 239	M 2-14
1983	Lloyd D. Smith, PLS No. 1101	M 94-1

NOTE:
The lightweight lines with bearings and distances shown were surveyed by Wayne L. Rogers and Bryan S. Seibold in 1995, and utilized to calculate the areas of the Federal interest lands in section 17.

This plat constitutes the entire record of the dependent resurvey of a portion of the subdivisional lines, designed to restore the corners in their true original locations according to the best available evidence, Township 25 South, Range 4 West, Willamette Meridian, Oregon.

The directions of the lines are based on the true meridian as determined by Global Positioning System (GPS) techniques and carried forward by sustained angulation using conventional survey techniques. All measurements along the lines were derived through the use of GPS and conventional survey techniques. Measured distances and directions have been adjusted by computer software that incorporates a least squares adjustment routine. The adjusted mean bearings and mean horizontal ground elevation distances are reported to the nearest second and 0.01 foot.

Official areas based on the measurements of this survey have been returned for Federal interest land where indicated. Aliquot part legal subdivisions retain their aliquot characteristics and refer to precisely the same land as that which was previously identified by its original survey or description. A lot can only be subdivided by survey or supplemental plat. Except as indicated hereon, the lottings and areas are as shown on the plats approved February 20, 1856, and March 5, 1862, and plats accepted October 6, 1959, and September 1, 1998.

Preliminary to the resurvey, a search was made for all corners, lines, other calls of record, and where available, collateral evidence of local surveys and corners. The corner data was thoroughly verified and only the true line field data are given hereon.

A magnet in a white plastic case was deposited at the base of each stainless steel post, and each new bearing tree has a 2 1/2 inch x 1/4 inch magnetic nail (Mag Nail) driven at the base on right side center, unless otherwise noted in the corner description. Only those lines bounding Federal interest land were blazed.

The geographic positions shown hereon were determined by ties from temporary GPS control points utilizing dual frequency, carrier phase GPS receivers, and processed using the National Geodetic Survey's Online Positioning User Service (OPUS).

The survey was executed in accordance with the specifications set forth in the Manual of Surveying Instructions (2009), and the special instructions approved July 16, 2014, for Group No. 2748, Oregon, by George M. Winter, Cadastral Surveyor, beginning July 21, 2014, and completed July 28, 2014. He was assisted by Luke A. Chapman, Robert NMI Durning, and Marc A. Montpas, Surveying Technicians.

LEGEND

- ◊ Original corner previously remonumented
- Corner previously established or reestablished

UNITED STATES DEPARTMENT OF THE INTERIOR
BUREAU OF LAND MANAGEMENT

Portland, Oregon

The survey represented by this plat, having been correctly executed in accordance with the requirements of law and the regulations of this Bureau, is hereby accepted.

For the Director

Mary J. M. Hartzel

Chief Cadastral Surveyor of Oregon

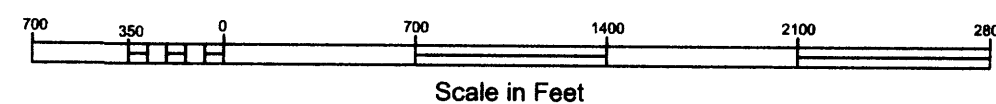
February 5, 2015
Date

I, George M. Winter, Cadastral Surveyor, HEREBY CERTIFY upon honor, that in pursuance of special instructions bearing the approval date of the 16th day of July, 2014, and assignment instructions bearing the date of the 16th day of July, 2014, I have dependently resurveyed a portion of the subdivisional lines, Township 25 South, Range 4 West, Willamette Meridian, Oregon, which are represented on this plat as having been executed by me and under my direction; and that said survey has been made in strict conformity with said special instructions, the Manual of Surveying Instructions, and in the specific manner described on this plat. (George M. Winter was not available for signature)

Mary J. M. Hartzel
Chief Cadastral Surveyor of Oregon

February 5, 2015
Date

LEGAL SUBDIVISION	OFFICIAL ACRES
SECTION 17	
NW1/4 NW1/4	40.20
SW1/4 NW1/4	39.86
TOTAL AREA	80.06
FEDERAL INTEREST LAND RESURVEYED	



Date: 4/3/2015 By: JC

This survey consists of:

Map: T25-4 2015-1

Narrative: VOL. 58 PGS 23174-23175

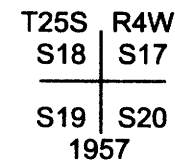
Corner Rpt: THIS PLAT REPRESENTS THE ENTIRE RECORD OF THE DEPENDENT RESURVEY

DOUGLAS COUNTY SURVEYOR

TOWNSHIP 25 SOUTH, RANGE 4 WEST, OF THE WILLAMETTE MERIDIAN, OREGON

DEPENDENT RESURVEY

(A) The cor. of secs. 17, 18, 19, and 20, monumented with an iron post, 2 1/2 ins. diam., firmly set, projecting 5 ins. above ground, with brass cap mkd.



from which the remaining original bearing tree

A fir, 39 ins. diam., bears S. 42° E., 42.2 ft. dist., with a healed blaze.

and bearing trees mkd. by Zirpel, Roseberry, and Corbin in 1957-58

A fir, 38 ins. diam., bears N. 61° E., 90.4 ft. dist., with a healed blaze.

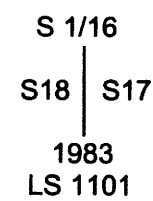
A fir, 30 ins. diam., bears N. 70° W., 36.3 ft. dist., with a healed blaze.

and a new bearing tree

A fir, 12 ins. diam., bears S. 73° W., 27.5 ft. dist., mkd. T25S R4W S19 BT.

From this cor., a point established by Haines, PLS No. 239, in 1956, bears S. 80° E., 2.3 ft. dist., monumented with a "T" shaped iron rod, 3/4 in. diam., firmly set, projecting 6 ins. above ground, with a brass disk on top, mkd. WILFORD N HAINES 239 SURVEY POINT DRAIN ORE.

(B) The S 1/16 sec. cor. of secs. 17 and 18, established by Smith, PLS No. 1101, in 1983, and is accepted as the cor., monumented with an iron post, 2 ins. diam., firmly set, projecting 16 ins. above ground, with brass cap mkd.



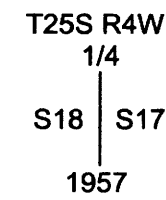
from which the remains of bearing trees mkd. by Smith

A fir, 18 ins. diam., bears N. 49° W., 6.6 ft. dist., with a healed blaze.

and a new bearing tree

A fir, 5 ins. diam., bears N. 36 1/4° E., 38.9 ft. dist., mkd. X BT.

(C) The 1/4 sec. cor. of secs. 17 and 18, monumented with an iron post, 2 1/2 ins. diam., firmly set, projecting 4 ins. above a mound of stone, 3 ft. base, 1 ft. high, with brass cap mkd.



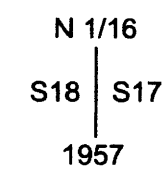
from which bearing trees mkd. by Zirpel, Roseberry, and Corbin in 1957-58

A fir, 32 ins. diam., bears N. 69 1/2° E., 34.3 ft. dist., with a healed blaze.

A fir, 33 ins. diam., bears N. 49 3/4° W., 76.2 ft. dist., with a healed blaze.

Corner is located under a barbed wire fence extending N. and S.

(D) The N 1/16 sec. cor. of secs. 17 and 18, monumented with an iron post, 2 1/2 ins. diam., firmly set, projecting 7 ins. above ground, with brass cap mkd.



from which the remains of a bearing tree mkd. by Zirpel, Roseberry, and Corbin in 1957-58

A fir, 29 ins. diam., bears S. 72 3/4° E., 41.6 ft. dist., with a healed blaze. (Record, S. 71 1/4° E.)

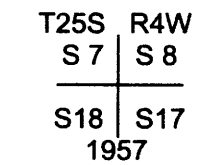
and new bearing trees

A fir, 4 ins. diam., bears N. 73 1/2° E., 7.4 ft. dist., mkd. X BT.

A fir, 5 ins. diam., bears S. 14 1/2° W., 9.4 ft. dist., mkd. X BT.

Corner is located on the west side of a barbed wire fence extending N. and S.

(E) The cor. of secs. 7, 8, 17, and 18, monumented with an iron post, 2 1/2 ins. diam., firmly set, projecting 3 ins. above ground, (alongside of which is an iron pipe, 1 1/2 ins. diam., firmly set, projecting 2 ft. above ground) with brass cap mkd.



from which the remains of bearing trees mkd. by Zirpel, Roseberry, and Corbin in 1957-58

A fir stump, 38 ins. diam., bears N. 80° E., 129.4 ft. dist., with a healed blaze.

A fir, 70 ins. diam., bears S. 85 1/4° E., 230.7 ft. dist., with a healed blaze.

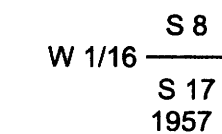
An oak, 13 ins. diam., bears S. 12 1/2° W., 90.4 ft. dist., with a healed blaze. (Record, S. 13 1/4° W.)

and a new bearing tree

A fir, 5 ins. diam., bears N. 81 1/4° E., 24.0 ft. dist., mkd. X BT.

Corner is located S. 65° W., 1 ft. dist. from the remains of fences extending N., S., and E.

(F) The W 1/16 sec. cor. of secs. 8 and 17, monumented with an iron post, 2 1/2 ins. diam., firmly set, projecting 3 ins. above ground, with brass cap mkd.



from which the remaining bearing tree mkd. by Zirpel, Roseberry, and Corbin in 1957-58

A madrone, 13 ins. diam., bears N. 57 1/4° E., 24.4 ft. dist., with a healed blaze.

and a new bearing tree

A fir, 16 ins. diam., bears N. 77 1/2° W., 6.4 ft. dist., mkd. W 1/16 S 8 BT.

UNITED STATES DEPARTMENT OF THE INTERIOR
BUREAU OF LAND MANAGEMENT

Portland, Oregon

The survey represented by this plat, having been correctly executed in accordance with the requirements of law and the regulations of this Bureau, is hereby accepted.

For the Director

Mary J. M. Hault

Chief Cadastral Surveyor of Oregon

February 5, 2015

Date

OFFICIALLY FILED: 3/30/2015