

# TOWNSHIP 25 SOUTH, RANGE 4 WEST, OF THE WILLAMETTE MERIDIAN, OREGON

## RETRACEMENT

DOUGLAS COUNTY SURVEYOR

This plat constitutes the entire record of the retracement of a portion of the subdivisional lines, Township 25 South, Range 4 West, Willamette Meridian, Oregon.

The direction of the line is based on the true meridian as determined by Global Positioning System (GPS) techniques and carried forward by sustained angulation using conventional survey techniques. All measurements along the lines were derived through the use of GPS and conventional survey techniques. Measured distances and directions have been adjusted by computer software that incorporates a least squares adjustment routine. The adjusted mean bearing and mean horizontal ground elevation distance is reported to the nearest second and 0.01 foot.

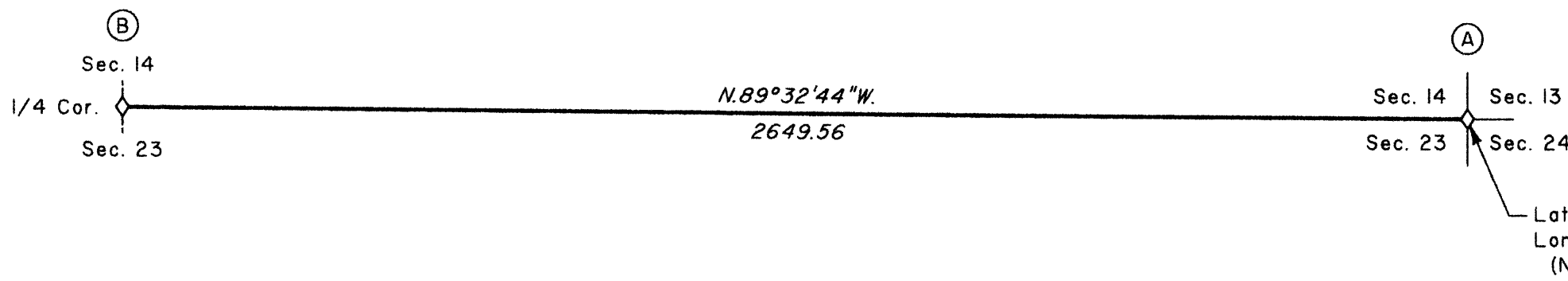
The lines of the official original survey and resurveys were retraced and search was made for all corners, lines, other calls of the record, and, where available, collateral evidence of local surveys and corners. Identified corners were perpetuated in their original positions. The retracement data were thoroughly verified and only the true line field data are given hereon.

Each new bearing tree has a 2 1/2 x 1/4 inch magnetic nail (Mag Nail) driven at the base on right side center, unless otherwise noted in the corner description.

Only those lines bounding Federal interest land were blazed.

The geographic position shown hereon was determined by direct occupation, utilizing dual frequency, carrier phase GPS receivers, and processed using the National Geodetic Survey's Online Positioning User Service (OPUS).

The survey was executed in accordance with the specification set forth in the Manual of Surveying Instructions (2009), and the special instructions approved April 28, 2010, for Group No. 2500, Administrative File No. 1204, Oregon, by Kenneth W. Saveland, Cadastral Surveyor, beginning March 23, 2012, and completed April 24, 2012. He was assisted by A. Bert Skeesick, Cadastral Surveyor, and Robert NMI Durning, Thomas A. Hollamon, and Marc A. Montpas, Surveying Technicians.



Latitude 43°23'16.078"N.  
Longitude 123°07'39.485"W.  
(NAD 1983 (CORS 96))

(A) The cor. of secs. 13, 14, 23, and 24, monumented with an iron post, 2 1/2 ins. diam., firmly set, projecting 3 ins. above ground, with a brass cap mkd.

T 25 S R 4 W  
S 14 | S 13  
S 23 | S 24  
1957

from which the remains of bearing trees mkd. by person(s) unknown

A roothole bears N. 34 3/4° E., 4.6 ft. dist., downhill of which is a fallen, decayed, dogwood snag, 6 ins. diam., with no marks visible on a hollow blaze.

A cedar, 30 ins. diam., bears S. 28 1/2° W., 16.5 ft. dist., with a healed blaze.

and the remains of bearing trees mkd. by Zirpel, Corbin, and Roseberry

A sawed fir stump, 27 ins. diam., bears S. 41 1/4° E., 37.0 ft. dist., with a healed blaze.

A sawed, decayed cedar stump, size indeterminate, bears S. 47° W., 27.7 ft. dist., with no marks visible.

A sawed cedar stump, 25 ins. diam., bears N. 25 3/4° W., 42.9 ft. dist., with a healed blaze.

and new accessories

A rebar, 30 ins. long, 5/8 in. diam., driven 30 ins. in the ground for a reference monument, bears N. 23° 56' 18" E., 15.21 ft. dist., with an aluminum cap mkd. RM T25S R4W S13 15.2 FT TO COR 2012 and an arrow pointing to the cor.

A rebar, 30 ins. long, 5/8 in. diam., driven 30 ins. in the ground for a reference monument, bears S. 46° 33' 44" E., 21.28 ft. dist., with an aluminum cap mkd. RM T25S R4W S24 21.3 FT TO COR 2012 and an arrow pointing to the cor.

A fir, 17 ins. diam., bears N. 55° W., 73.0 ft. dist., mkd. T25S R4W S14 BT.

(B) The 1/4 sec. cor. of secs. 14 and 23, monumented with an iron post, 2 1/2 ins. diam., firmly set, top flush with the bed of Norris Creek (alongside of which is an iron post, 1 1/4 ins. diam., firmly set, projecting 4 ins. above same creek bed, with brass cap mkd. COUNTY SURVEYORS OFFICE T25S R4W 1/4 S14 23 1956), with brass cap mkd.

T 25 S R 4 W  
S 14  
1/4  
S 23  
1957

from which the remains of an original bearing tree

A sawed, decayed cedar stump, 36 ins. diam., bears N. 60° E., 5.3 ft. dist., with no marks visible.

and a bearing tree mkd. by Byron, Deputy County Surveyor, in 1956

A cedar, 29 ins. diam., bears S. 63 1/2° W., 83.8 ft. dist., with a healed blaze.

and the remains of a bearing tree mkd. by Bishop and Rogers

A roothole bears N. 67° W., 81.8 ft. dist., alongside of which is a fallen, living yew, 15 ins. diam., with no marks visible.

and new reference monuments

A rebar, 30 ins. long, 5/8 in. diam., driven 29 ins. in the ground for a reference monument, bears N. 27° 15' 36" E., 19.05 ft. dist., with an aluminum cap mkd. RM 1/4 S14 19.1 FT TO COR 2012 and an arrow pointing to the cor.

A rebar, 30 ins. long, 5/8 in. diam., driven 29 ins. in the ground for a reference monument, bears S. 73° 38' 12" E., 25.70 ft. dist., with an aluminum cap mkd. RM 1/4 S23 25.7 FT TO COR 2012 and an arrow pointing to the cor.

Corner is located 1 ft. W. of the right bank of Norris creek, 5 ft. wide, course N. 5° W.

The history of official surveys pertaining to this retracement is as follows:

In 1871, William H. Byars, U.S. Deputy Surveyor, surveyed the subdivisional lines as shown on the official plat of survey approved April 26, 1872.

In 1957-58, Irving Zirpel, Jr., Lynn M. Roseberry, and Harold D. Corbin, Cadastral Surveyors, resurveyed a portion of the subdivisional lines and subdivided section 13 as shown on the official plat of survey accepted October 6, 1959.

In 1983, Lance J. Bishop and Wayne L. Rogers, Cadastral Surveyors, resurveyed a portion of the subdivisional lines and subdivided sections 23 and 27 as shown on the official plat of survey accepted February 22, 1985.

The following local survey filed in the Douglas County Surveyor's Office is referred to in a subsequent corner description and is referenced by surveyor's last name, official title or Professional Land Surveyor (PLS) No., and year.

Date Name and Registration Number File Number  
1956 James Byron, Deputy Co. Surveyor CS 47/133

### LEGEND

◇ Original corner previously remonumented

UNITED STATES DEPARTMENT OF THE INTERIOR  
BUREAU OF LAND MANAGEMENT

Portland, Oregon

The survey represented by this plat, having been correctly executed in accordance with the requirements of law and the regulations of this Bureau, is hereby accepted.

For the Director

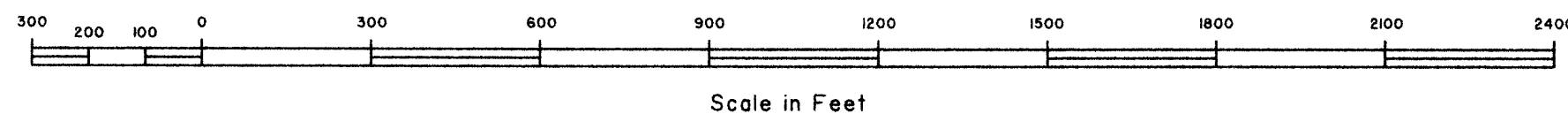
*Mary J. M. Hunt*

Chief Cadastral Surveyor of Oregon

I, Kenneth W. Saveland, Cadastral Surveyor, HEREBY CERTIFY upon honor, that in pursuance of special instructions bearing the approval date of the 28th day of April, 2010, and the assignment instructions bearing the date of the 23rd day of March, 2012, I have retraced a portion of the subdivisional lines, Township 25 South, Range 4 West, Willamette Meridian, Oregon, which is represented upon this plat as having been executed by me and under my direction; and that said survey has been made in strict conformity with said special instructions, the Manual of Surveying Instructions, and in the specific manner described on this plat.

*Kenneth W. Saveland*  
Cadastral Surveyor

*JULY 25, 2012*  
Date



OFFICIALLY FILED: 9/12/12