

TOWNSHIPS 25 AND 26 SOUTH, RANGE 4 WEST, OF THE WILLAMETTE MERIDIAN, OREGON

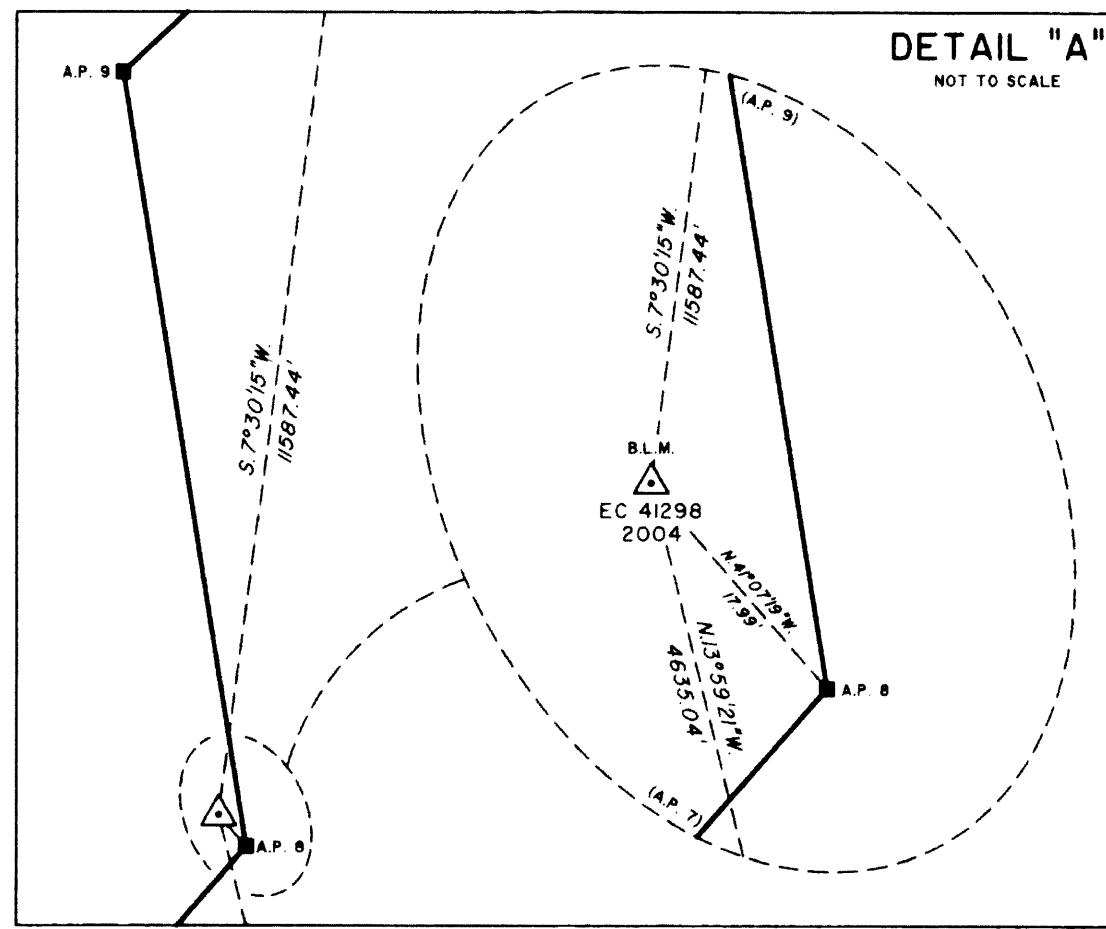
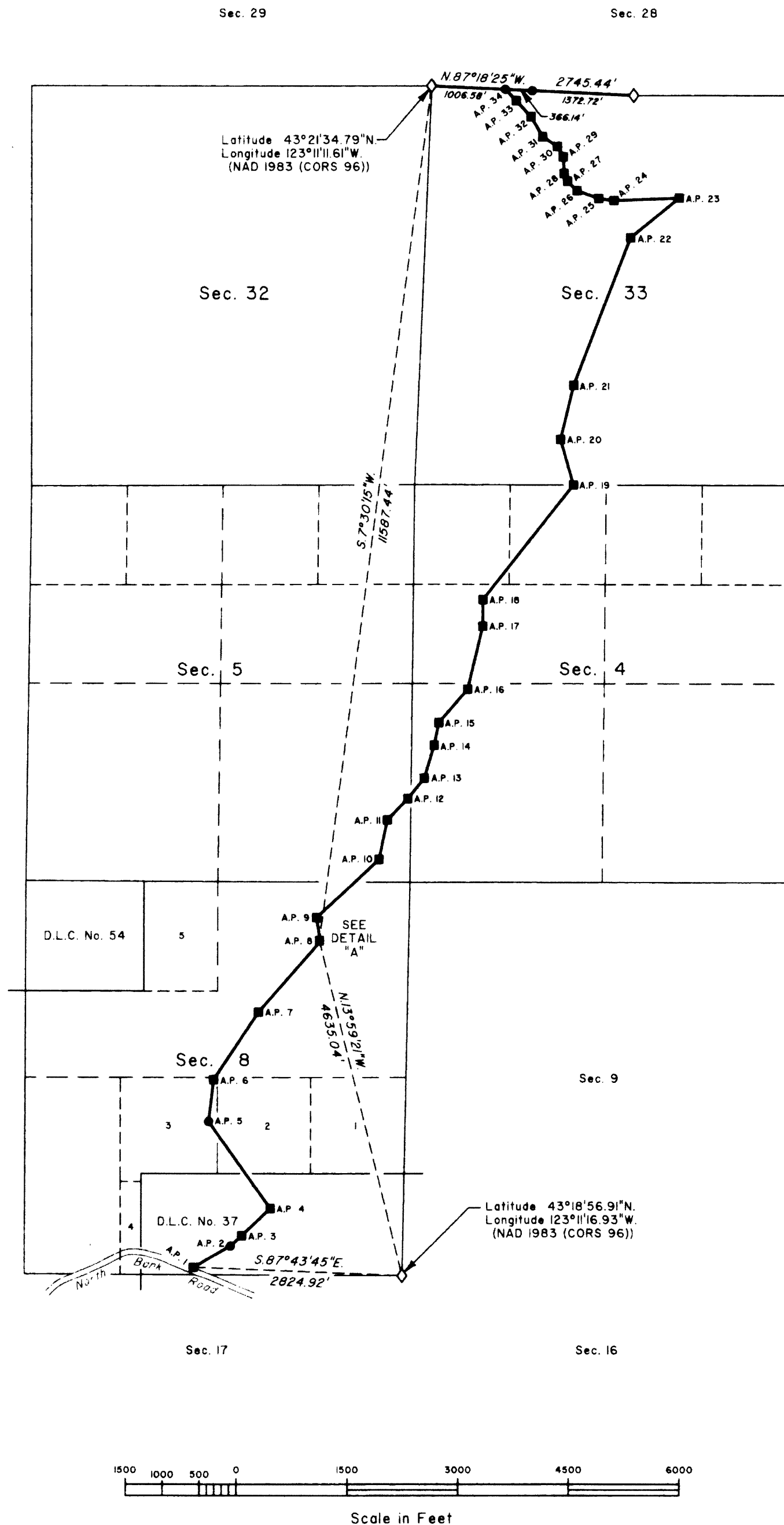
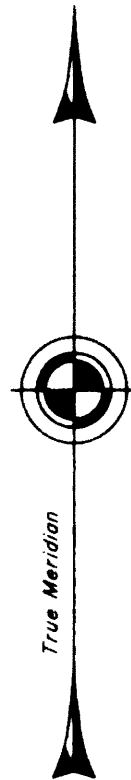
DEPENDENT RESURVEY AND METES-AND-BOUNDS SURVEY

FILED
 Date: 1-16-2009 By: JC
 This survey consists of:
 Map: M158-51
 Narrative: BLM Line Notes
 Corner Rpt: V55 Pg 31, 560-92
 DOUGLAS COUNTY SURVEYOR

MAP FILE M158-51

BEARING & DISTANCE TABLE
 Metes-and-Bounds Survey
 East Boundary - Parcel 2
 Statutory Special Warranty Deed OR-49268

■ AP 1	N. 60°35'24"E.	578.80'
● AP 2	N. 47°01'31"E.	202.79'
■ AP 3	N. 47°01'31"E.	531.78'
■ AP 4	N. 35°32'22"W.	1438.40'
● AP 5	N. 6°51'49"E.	568.90'
■ AP 6	N. 33°46'33"E.	1089.47'
■ AP 7	N. 41°24'02"E.	1261.80'
■ AP 8	N. 9°05'26"W.	325.38'
■ AP 9	N. 47°12'56"E.	1152.24'
■ AP 10	N. 12°01'05"E.	544.20'
■ AP 11	N. 44°18'21"E.	395.10'
■ AP 12	N. 39°18'56"E.	351.95'
■ AP 13	N. 16°56'06"E.	465.60'
■ AP 14	N. 11°23'10"E.	310.15'
■ AP 15	N. 41°21'10"E.	596.67'
■ AP 16	N. 13°28'47"E.	873.03'
■ AP 17	N. 0°33'18"E.	356.96'
■ AP 18	N. 38°32'28"E.	1965.19'
■ AP 19	N. 15°56'29"W.	638.74'
■ AP 20	N. 13°41'17"E.	750.32'
■ AP 21	N. 21°13'51"E.	2125.84'
■ AP 22	N. 50°58'16"E.	850.98'
■ AP 23	S. 87°44'22"W.	885.62'
■ AP 24	N. 82°04'26"W.	210.00'
■ AP 25	N. 70°05'08"W.	311.32'
■ AP 26	N. 44°24'32"W.	180.43'
■ AP 27	N. 24°51'07"W.	115.74'
■ AP 28	N. 2°23'14"W.	222.24'
■ AP 29	N. 30°20'01"W.	161.07'
■ AP 30	N. 56°46'24"W.	236.85'
■ AP 31	N. 30°15'39"W.	314.39'
■ AP 32	N. 43°23'21"W.	290.42'
● AP 33	N. 43°23'21"W.	213.78'
● AP 34		



A history of surveys is contained in the field notes.

This plat represents a dependent resurvey of a portion of the subdivisional lines, T. 25 S., R. 4 W., Willamette Meridian, Oregon, designed to restore the corners in their true original locations according to the best available evidence, and the metes-and-bounds survey of a portion of the east boundary of Parcel 2, Statutory Special Warranty Deed OR-49268, Tps. 25 and 26 S., R. 4 W., Willamette Meridian, Oregon.

Measured distances and directions have been adjusted by computer software that incorporates a least squares adjustment routine. The adjusted bearings and distances are reported to the nearest second and 0.01 foot.

The lottings and areas are as shown on the plat approved December 10, 1855.

The survey was executed by A. Bert Skeesick and Timothy J. Moore, Cadastral Surveyors, and Robert H. Browning, Surveying Technician, beginning February 19, 2004, and completed March 29, 2004, pursuant to Special Instructions dated February 2, 2004, under Group Number 2069, Oregon.

Timber in this area consists of fir, cedar, oak, and madrone.

The ties to the geodetic control station are reported as mean bearing and sea level distance.

LEGEND

- ◇ Original corner previously remonumented
- Corner previously established or reestablished; remonumented this survey
- Corner established or reestablished this survey

UNITED STATES DEPARTMENT OF THE INTERIOR
 BUREAU OF LAND MANAGEMENT
 Portland, Oregon

This plat is strictly conformable to the approved field notes, and the survey, having been correctly executed in accordance with the requirements of law and the regulations of this Bureau, is hereby accepted.

For the Director
John P. Dainoworth, Acting
 Chief Cadastral Surveyor of Oregon

November 24, 2008
 Date

MAP FILE M158-51