

TOWNSHIP 25 SOUTH, RANGE 4 WEST, OF THE WILLAMETTE MERIDIAN, OREGON

DEPENDENT RESURVEY AND SUBDIVISION OF SECTIONS 16 AND 17

FILED

Date: 1-14-1999 By: J.P.

This survey consists of:

Map: _____

Narrative: Vol 52

Corner Rpt: P65 19894-19918

DOUGLAS COUNTY
SURVEYOR

A history of surveys is contained in the field notes

This plat represents a dependent resurvey of a portion of the subdivision lines and boundaries of Donation Land Claim No 41, T 25 S., R 4 W., Willamette Meridian, Oregon, designed to restore the corners in their true original locations according to the best available evidence, and the subdivision of sections 16 and 17

Measured distances and directions have been adjusted by Cadastral Measurement Management (CMM), a computer program that incorporates a least squares adjustment routine. The adjusted bearings and distances are reported to the nearest second and 0.001 chain

Except as shown hereon, the lottings and areas are as shown on the plats approved February 20, 1856 and March 5, 1862, and the plat accepted October 6, 1959

The survey was executed by Wayne L Rogers and Bryan S Seibold, Cadastral Surveyors, and Robert H. Browning, Surveying Technician, beginning June 19, 1995, and completed October 18, 1995, pursuant to Special Instructions dated April 18, 1995, under Group Number 1755, Oregon.

Timber in this area consists of fir, cedar, hemlock, pine, madrone, chinquapin, oak, yew, maple and alder.

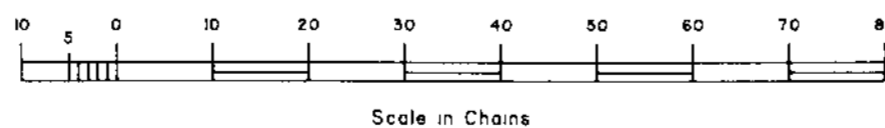
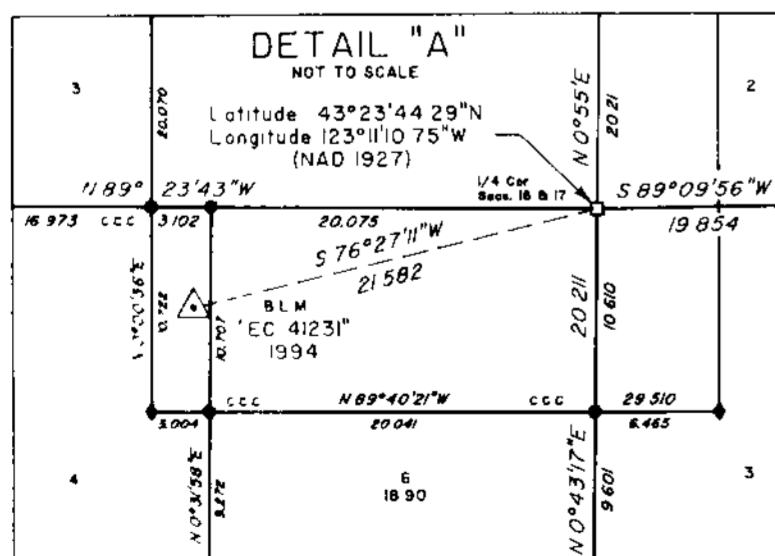
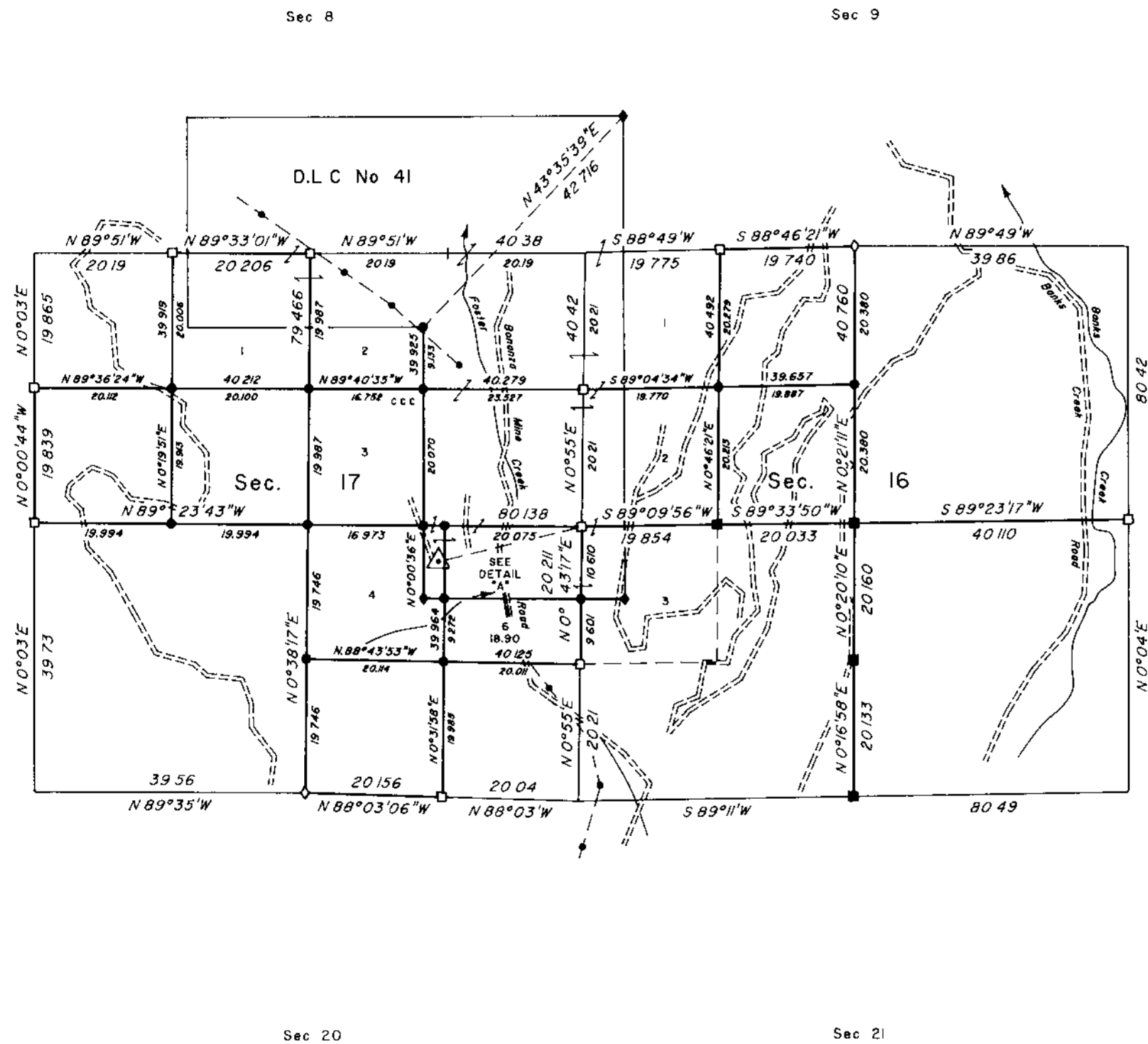
The tie to the geodetic control station is reported as mean bearing and sea level distance

Note:

The lightweight section lines were resurveyed by Irving Zirpel, Jr., Lynn M Roseberry, and Harold D Corbin in 1957-58



Mean magnetic declination 19° East



LEGEND	
◇	Original corner previously remonumented
◆	Original corner remonumented this survey
□	Corner previously established or reestablished
■	Corner previously established or reestablished, remonumented this survey
●	Corner established or reestablished this survey

UNITED STATES DEPARTMENT OF THE INTERIOR
BUREAU OF LAND MANAGEMENT

Portland, Oregon

September 1, 1998

This plat is strictly conformable to the approved field notes, and the survey, having been correctly executed in accordance with the requirements of law and the regulations of this Bureau, is hereby accepted

For the Director

Chief Cadastral Surveyor of Oregon