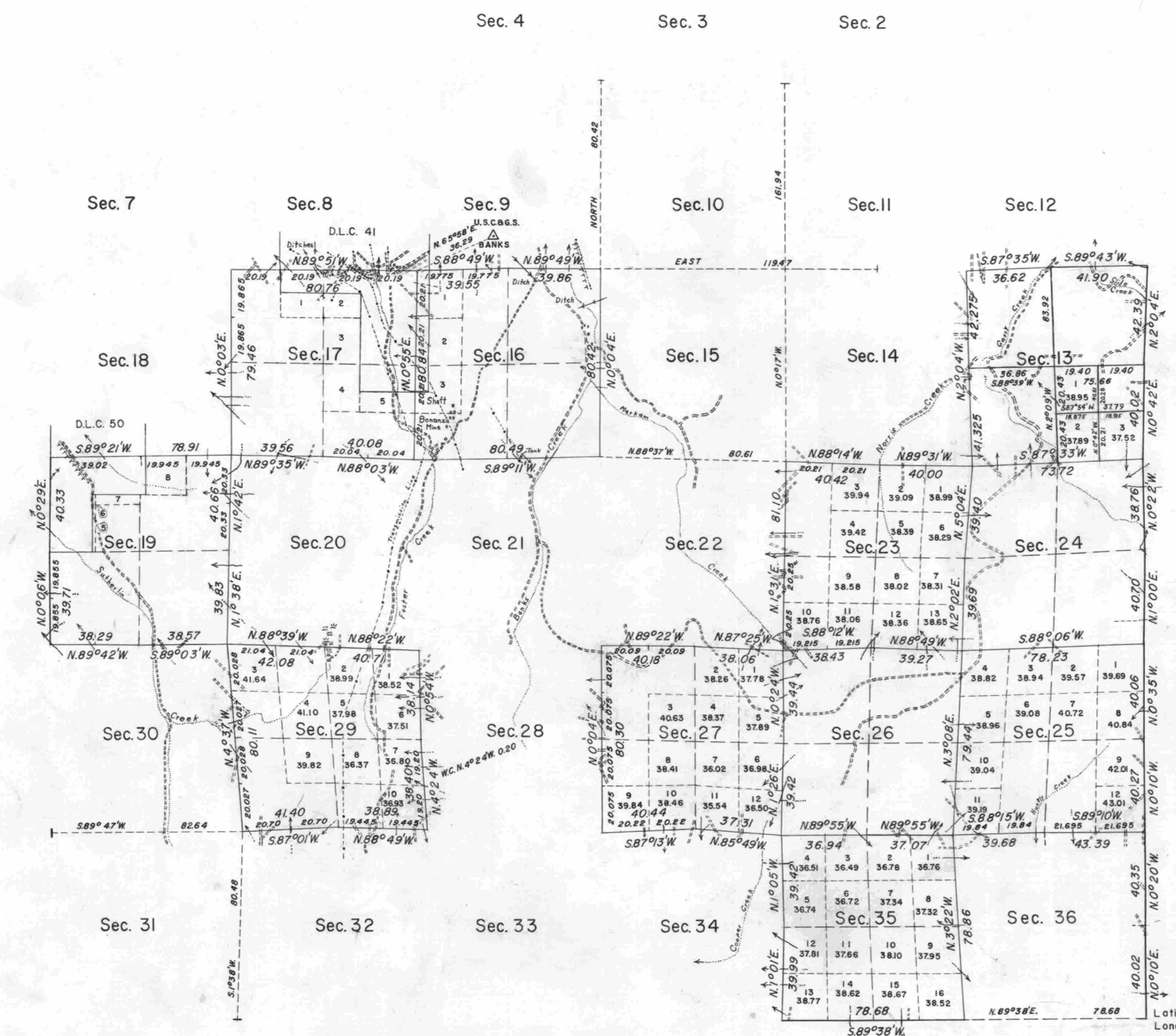


TOWNSHIP 25 SOUTH, RANGE 4 WEST, OF THE WILLAMETTE MERIDIAN, OREGON. DEPENDENT RESURVEY

True Meridian



Mean Magnetic Declination
20° 14' East



0 5 10 20 30 40 50 60 70 80
Chains

Area resurveyed: 6,934.77 acres

This plat represents a retracement and re-establishment of portions of the south, east, and west boundaries and a portion of the subdivisional lines designed to restore the corners in their true original location according to the best available evidence; and excepting as new or modified vacant subdivisions are shown hereon, the lottings and areas are as shown on the plats approved February 20, 1856, March 5, 1862, and April 26, 1872.

West boundary surveyed by Jas. C. Freeman in 1851.

North, south, and a portion of the east boundary and a portion of the subdivisional lines surveyed by Gordon and Gardner in 1855 and 1856.

A portion of the east boundary and a portion of the subdivisional lines surveyed by Wm. H. Byars in 1871.

A portion of the east boundary resurveyed by Norman D. Price in 1943.

Dependent resurvey of the south, east, and west boundaries and a portion of the subdivisional lines of T. 25 S., R. 4 W., W.M., Oregon, executed by Irving Zirpel, Jr., Lynn M. Roseberry, and Harold D. Corbin, August 28, 1957 to August 19, 1958, under special instructions dated July 8, 1957 and July 15, 1958, which provide for the surveys included under Group 356, Oregon.

Timber in this area consists mainly of fir, hemlock, cedar, and scattering oak with some yew, maple, madrone, cottonwood, ash, alder, dogwood, and pine.

Latitude 43° 20' 32.1"N.
Longitude 123° 06' 29.3"W.

UNITED STATES DEPARTMENT OF THE INTERIOR
BUREAU OF LAND MANAGEMENT
Washington, D. C. October 6, 1959

This plat is strictly conformable to the approved field notes, and the survey, having been correctly executed in accordance with the requirements of law and the regulations of this Bureau, is hereby accepted.

For the Director
Donald B. Clement
Cadastral Engineering Staff Officer