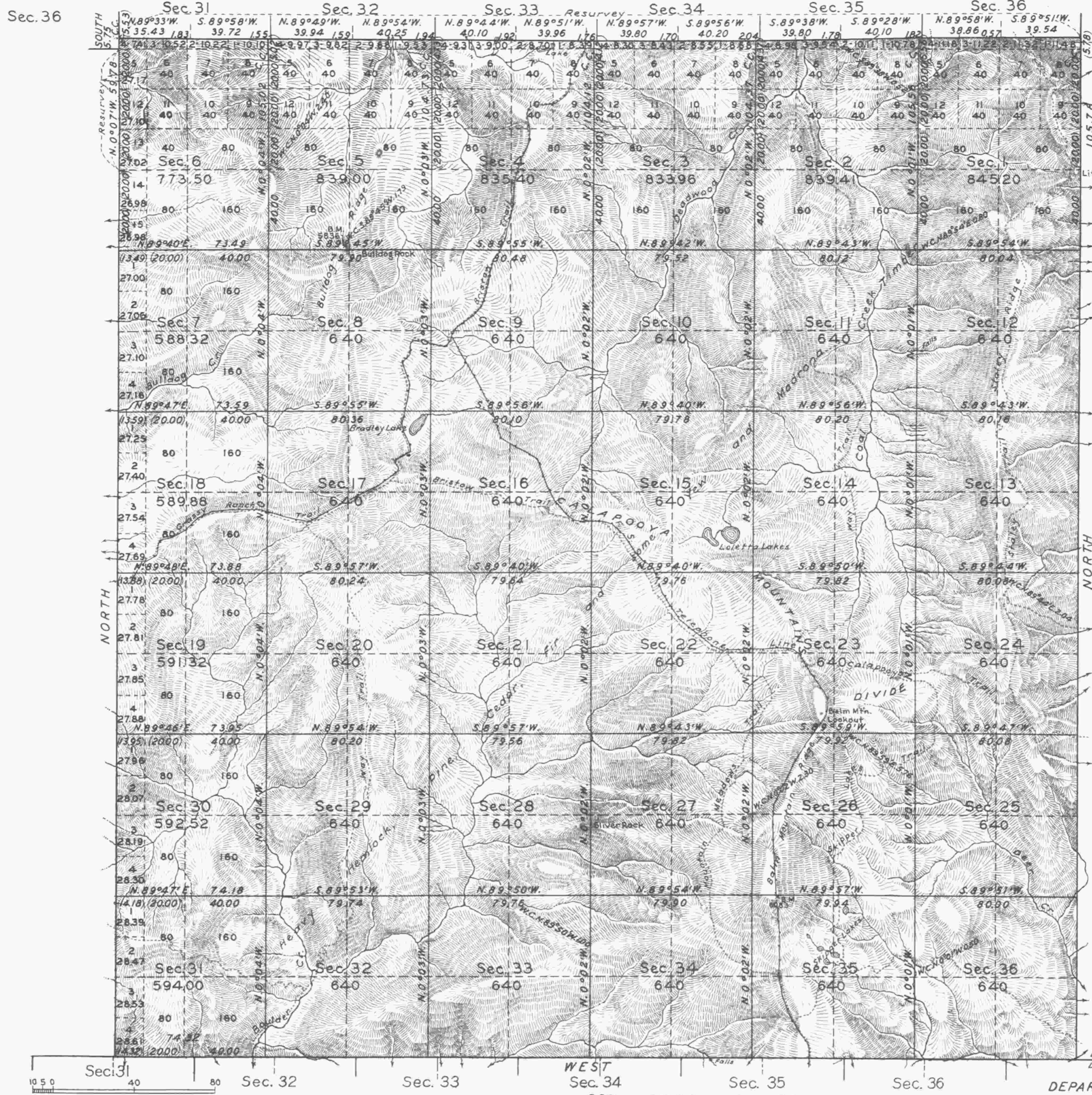


TOWNSHIP No. 25 SOUTH, RANGE No. 3 EAST, OF THE WILLAMETTE MERIDIAN, OREGON.



Scale: 40 Chains to an Inch. Area Surveyed 23,922.51 Acres.

Mean Magnetic Declination 21°15'E.

LINES DESIGNATED	BY WHOM SURVEYED	GROUP		MILEAGE MLS. CHS.	WHEN SURVEYED	
		No.	DATE		BEGUN	COMPLETED
Exterior	Otto L. Draper			18 73.58		
Subdivisional		74	March 12, 1921	61 12.01	June 7, 1931	August 31, 1931
Miscellaneous				9.91		

Office of U.S. Supervisor of Surveys
 Denver, Colorado, Jan. 28, 1933.
 The above plat of Township No. 25 South, Range No. 3 East,
 of the Willamette Meridian, Oregon, is strictly conformable
 to the field notes of the survey thereof which have been
 examined and approved.

Charles H. Cannon
 U.S. Supervisor of Surveys.

DEPARTMENT OF THE INTERIOR
 GENERAL LAND OFFICE
 Washington, D.C., August 8, 1933.
 The survey represented by this plat
 having been correctly executed in accordance
 with the requirements of law and the regulations
 of this office, is hereby accepted.

Antonette [Signature]
 Assistant Commissioner.

REWS
 80