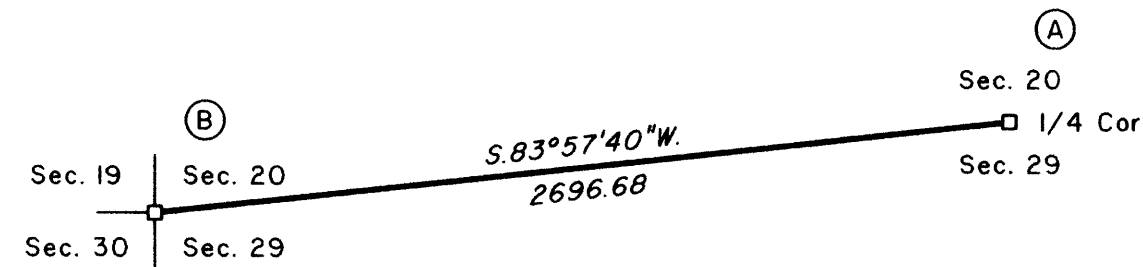


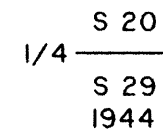
TOWNSHIP 25 SOUTH, RANGE 3 WEST, OF THE WILLAMETTE MERIDIAN, OREGON

RETRACEMENT



Latitude 43° 22' 36.31" N.
 Longitude 123° 05' 22.50" W.
 (NAD 1983 (CORS 96))

(A) The 1/4 sec. cor. of secs. 20 and 29, perpetuated by the Douglas County Surveyor's Office in 1966, further perpetuated by Edwards, PLS No. 2339, in 2002, monumented with an iron post, 1 in. diam., firmly set, projecting 7 ins. above ground, with brass cap mkd.



from which the remains of a bearing tree mkd. by Price

A sawed cedar stump, 23 ins. diam., bears S. 33° W., 15.2 ft. dist., with scribe marks S29 CS BT visible on an open blaze, and an aluminum cover.

and remains of bearing trees mkd. by the Douglas County Surveyor's Office

A burnt, decayed cedar snag, 13 ins. diam., bears N. 34 1/2° E., 48.3 ft. dist., with no marks visible on a burnt, hollowed blaze.

An uprooted, sawed cedar stump, 20 ins. diam., bears S. 29 1/4° W., 83.3 ft. dist., with scribe marks 1/4 S29 CS BT visible on an open blaze, and an aluminum cover. (Disturbed by road-building activity.)

and remains of bearing trees mkd. by Edwards

A fir, 5 ins. diam., bears N. 24 1/2° E., 5.0 ft. dist., with scribe marks XI visible on a partially healed blaze.

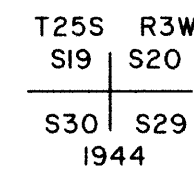
A fir snag, 5 ins. diam., bears S. 82 3/4° E., 4.3 ft. dist., with scribe marks XI visible on a partially healed blaze.

and a new bearing tree

A hemlock, 9 ins. diam., bears S. 12° E., 24.0 ft. dist., mkd. 1/4 S29 BT.

Corner is located 40 ft. E. of a graveled road, 12 ft. wide, bears S. 10° E. and N. 10° W.

(B) The cor. of secs. 19, 20, 29, and 30, monumented with an iron post, 2 ins. diam., firmly set, projecting 16 ins. above ground, with brass cap mkd.



from which the remains of bearing trees mkd. by Price

A sawed fir stump, 45 ins. diam., bears N. 80° E., 24.6 ft. dist., with no marks visible.

A sawed fir stump, 51 ins. diam., bears S. 64 3/4° E., 29.0 ft. dist., with scribe marks S29 S BT visible on an open blaze.

A roothole bears N. 88° W., 43.6 ft. dist., with fallen trunk, 40 ins. diam., lying alongside, with a healed blaze.

and the remains of bearing trees mkd. by Godfrey, Deputy County Surveyor, in 1963,

A cedar, 24 ins. diam., bears S. 83 1/2° W., 100.6 ft. dist., with a healed blaze.

A sawed fir stump, 26 ins. diam., bears N. 80° W., 108.7 ft. dist., with fragmentary scribe marks visible on a partially healed blaze.

and bearing trees mkd. by Skeesick

A fir, 15 ins. diam., bears N. 63° E., 19.1 ft. dist., with fragmentary scribe marks visible on a partially healed blaze.

A fir, 18 ins. diam., bears S. 41 3/4° E., 39.5 ft. dist., with a healed blaze.

A fir, 11 ins. diam., bears N. 61 1/4° W., 32.9 ft. dist., with a healed blaze.

and a new accessory

An iron rebar, 30 ins. long, 5/8 in. diam., driven 29 ins. in the ground for a reference monument, bears S. 43° 11' 00" W., 35.00 ft. dist., with aluminum cap mkd. RM T25S R3W S30 35.0 FT TO COR 2012 and an arrow pointing to the cor.

This plat constitutes the entire record of the retracement of a portion of the subdivisional lines, Township 25 South, Range 3 West, Willamette Meridian, Oregon.

A history of official surveys pertaining to this retracement is as follows:

In 1883, Laban H. Wheeler, U.S. Deputy Surveyor, surveyed the subdivisional lines as shown on the official plat of survey approved May 19, 1884.

In 1943-44, Norman D. Price, Associate Cadastral Engineer, resurveyed the subdivisional lines as shown on the official plat of survey accepted January 7, 1946.

In 2002, A. Bert Skeesick, Cadastral Surveyor, rehabilitated the corner of sections 19, 20, 29, and 30 as shown in the official field notes approved November 3, 2004.

The following surveys and corner restorations filed in the Douglas County Surveyor's Office are referred to in subsequent corner description and are referenced by surveyor's last name, official title or Professional Land Surveyor (PLS) No., and year.

Date	Name and Registration Number	File Number
1963	Milo Godfrey, Dep. County Surveyor	CS 49/102
1966	Douglas County Surveyor's Office	CS 54/27
2002	David Edwards, PLS 2339	M140-45

The direction of the line is based on the true meridian as determined by Global Positioning Systems (GPS) techniques and carried forward by sustained angulation using conventional survey techniques. All measurements along the line were derived through the use of GPS and conventional survey techniques. Measured distances and directions have been adjusted by computer software that incorporates a least squares adjustment routine. The adjusted mean bearing and mean horizontal ground elevation distance are reported to the nearest second and 0.01 foot.

The lines of the official original survey and resurvey were retraced and search was made for all corners, lines, other calls of record, and, where available, collateral evidence of local surveys and corners. Identified corners were perpetuated in their original positions. The retracement data were thoroughly verified and only the true line field data are given hereon.

Each new bearing tree has a 2 1/2 x 1/4 inch magnetic nail (Mag Nail) driven at the base on right side center, unless otherwise noted in the corner description.

Only those lines bounding Federal interest land were blazed.

The geodetic position shown hereon was determined by a tie from a temporary GPS control Point utilizing dual frequency, carrier phase GPS receivers, and processed using the National Geodetic Online Positioning User Service (OPUS).

The survey was executed in accordance with the specification set forth in the Manual of Surveying Instructions (2009), and the special instructions approved April 28, 2010, for Group No. 2500, Administrative File No. 1203, Oregon, by A. Bert Skeesick, Cadastral Surveyor, beginning March 29, 2012, and completed May 10, 2012. He was assisted by Kenneth W. Saveland, Cadastral Surveyor, and Robert NMI Durning, Thomas A. Hollamon, and Marc A. Montpas, Surveying Technicians.

LEGEND

□ Corner previously established or reestablished

UNITED STATES DEPARTMENT OF THE INTERIOR
 BUREAU OF LAND MANAGEMENT

Portland, Oregon

The survey represented by this plat, having been correctly executed in accordance with the requirements of law and the regulations of this Bureau, is hereby accepted.

For the Director

Mary J. M. Huth

Chief Cadastral Surveyor of Oregon

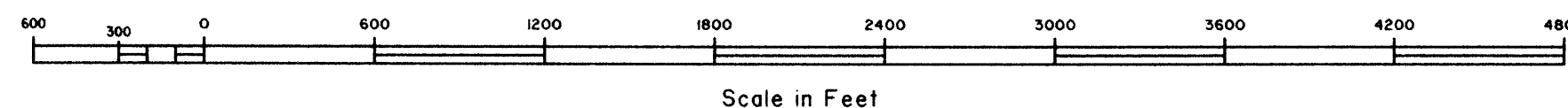
January 10, 2013
 Date



I, A. Bert Skeesick, Cadastral Surveyor, HEREBY CERTIFY upon honor, that in pursuance of special instructions bearing the approval date of the 28th day of April, 2010, and the assignment instructions bearing the date of the 24th day of April, 2012, I have retraced a portion of the subdivisional lines, Township 25 South, Range 3 West, Willamette Meridian, Oregon, which is represented upon this plat as having been executed by me and under my direction; and that said survey has been made in strict conformity with said special instructions, the Manual of Surveying Instructions, and in the specific manner described on this plat.

[Signature]
 Cadastral Surveyor

January 8, 2013
 Date



OFFICIALLY FILED: 1/25/2013