

TOWNSHIP 25 SOUTH, RANGE 3 WEST, OF THE WILLAMETTE MERIDIAN, OREGON

DEPENDENT RESURVEY AND SUBDIVISION OF SECTION 34

FILED
 Date: 9/7/2011 By: JC
 This survey consists of:
 Map: VOL 57
 Narrative: PAGES
 Corner Rpt: 22412-22445
 DOUGLAS COUNTY
 SURVEYOR

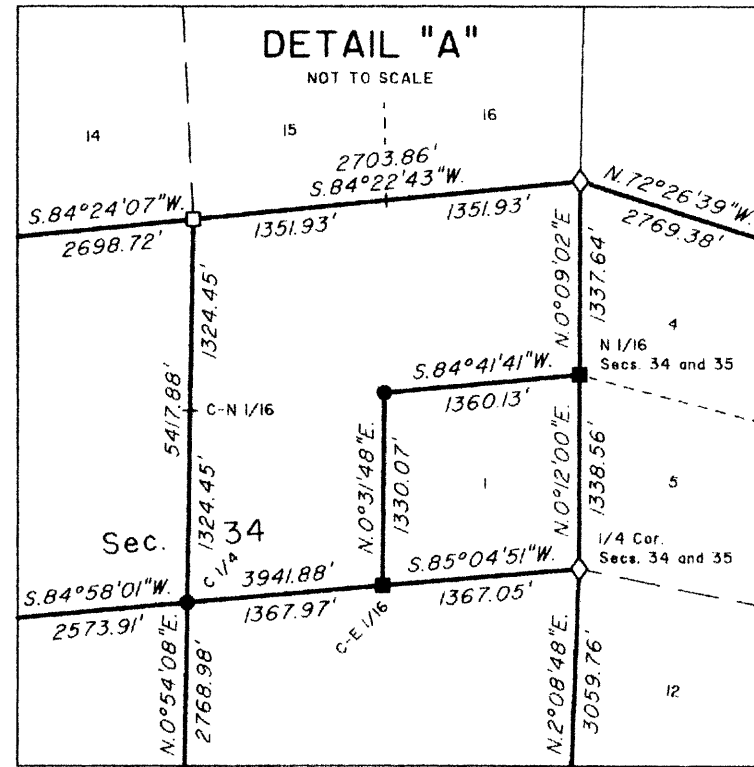
A history of surveys is contained in the field notes.

This plat represents the dependent resurvey of a portion of the south boundary and subdivisional lines, T. 25 S., R. 3 W., Willamette Meridian, Oregon, designed to restore the corners in their true original locations according to the best available evidence and subdivision of section 34.

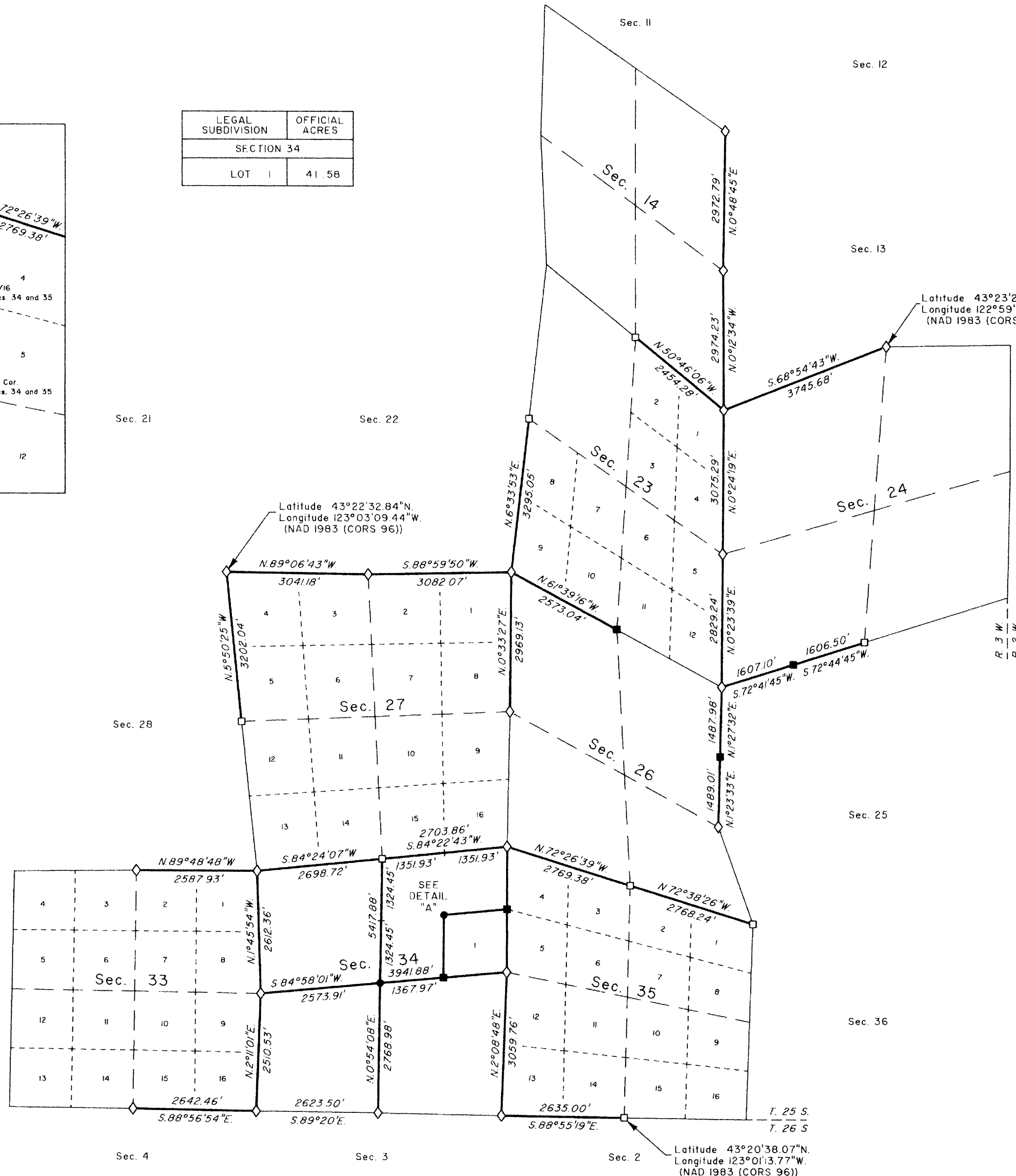
The survey was performed utilizing both conventional (directly measured angles and distances) and NAVSTAR Global Positioning System (GPS) satellite techniques. The GPS measurements utilized dual frequency, carrier phase GPS receivers. The baselines were computed in and adjusted using a least squares adjustment routine. Conventionally measured distances and directions have been adjusted using a least squares adjustment routine. The adjusted bearings and distances are reported to the nearest second and 0.01 foot.

Except as shown hereon, the lottings and areas are as shown on the plats approved May 19, 1884, accepted January 7, 1946, and accepted March 3, 1995

This survey was executed by A. Bert Skeesick and Kenneth W. Saveland, Cadastral Surveyors, and Robert H. Browning, Surveying Technician, beginning July 23, 2008, and completed October 20, 2008, pursuant to Special Instructions dated April 10, 2008, under Group Number 2212, Oregon.



LEGAL SUBDIVISION	OFFICIAL ACRES
SECTION 34	
LOT 1	41.58



LEGEND	
◇	Original corner previously remonumented
□	Corner previously established or reestablished
■	Corner previously established or reestablished; remonumented this survey
●	Corner established or reestablished this survey
+	Corner point calculated, no monument set

UNITED STATES DEPARTMENT OF THE INTERIOR
 BUREAU OF LAND MANAGEMENT

Portland, Oregon

This plat is strictly conformable to the approved field notes, and the survey, having been correctly executed in accordance with the requirements of law and the regulations of this Bureau, is hereby accepted.

For the Director

Maury W. Husted

Chief Cadastral Surveyor of Oregon

September 6, 2011
 Date

OFFICIALLY FILED: 8/12/2011