

# TOWNSHIP 25 SOUTH, RANGE 3 WEST, OF THE WILLAMETTE MERIDIAN, OREGON

## DEPENDENT RESURVEY AND SUBDIVISION OF SECTION 5

FILED

Date: 2/9/1999 By: JP

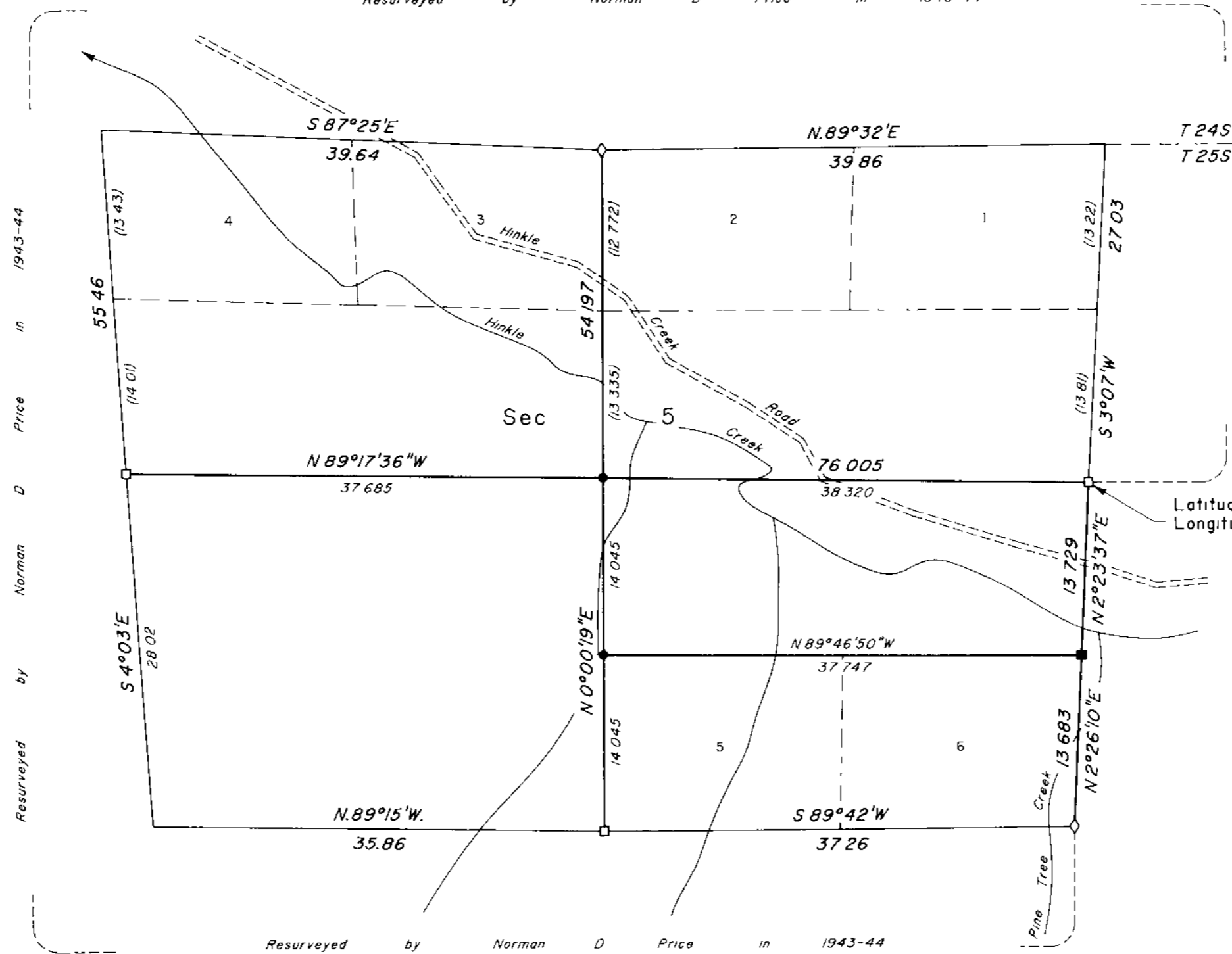
This survey consists of:

Map: \_\_\_\_\_  
Narrative: Vol 52 Pgs  
Corner Rpt: 19930-19938

**DOUGLAS COUNTY  
SURVEYOR**

Sec 32

Resurveyed by Norman D Price in 1943-44



A history of surveys is contained in the field notes

This plat represents a dependent resurvey of a portion of the subdivisional lines, T 25 S, R 3 W, Willamette Meridian, Oregon, designed to restore the corners in their true original locations according to the best available evidence, and the subdivision of section 5

Measured distances and directions have been adjusted by Cadastral Measurement Management (CMM), a computer program that incorporates a least squares adjustment routine. The adjusted bearings and distances are reported to the nearest second and 0.001 chain

The lottings and areas are as shown on the plat approved May 19, 1884, and July 24, 1945

The survey was executed by Bryan S Seibold, Cadastral Surveyor, beginning July 9, 1996, and completed August 7, 1996, pursuant to Special Instructions dated April 30, 1996, under Group Number 1800, Oregon

Timber in this area consists of fir, cedar, hemlock, pine, alder, chinquapin, madrone, oak, yew and maple

Latitude 43°25'38.99"N  
Longitude 123°04'05.59"W  
(NAD 1927)

### LEGEND

- ◊ Original corner previously remonumented
- Corner previously established or reestablished
- Corner previously established or reestablished remonumented this survey
- Corner established or reestablished this survey

UNITED STATES DEPARTMENT OF THE INTERIOR  
BUREAU OF LAND MANAGEMENT

Portland, Oregon

September 4, 1998

This plat is strictly conformable to the approved field notes, and the survey, having been correctly executed in accordance with the requirements of law and the regulations of this Bureau, is hereby accepted

For the Director

*Wayne M. Gardner*  
Chief Cadastral Surveyor of Oregon

