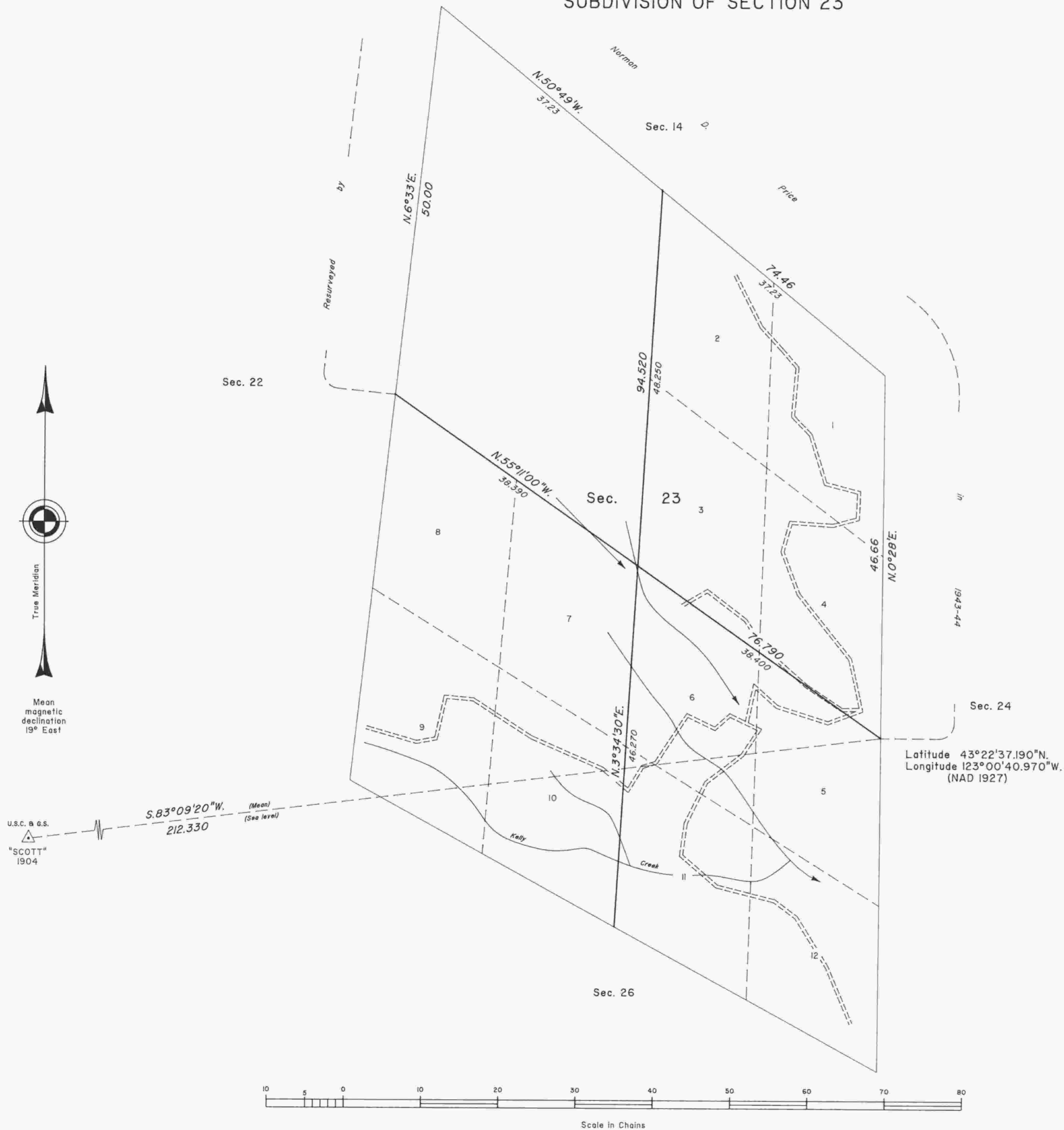


# TOWNSHIP 25 SOUTH, RANGE 3 WEST, OF THE WILLAMETTE MERIDIAN, OREGON

## SUBDIVISION OF SECTION 23



A history of surveys is contained in the field notes.

This plat represents the subdivision of section 23, T. 25 S., R. 3 W., Willamette Meridian, Oregon.

The lottings and areas are as shown on the plats approved May 19, 1884 and July 24, 1945.

The survey was executed by Dale T. Bedell, Cadastral Surveyor, beginning June 23, 1993, and completed July 15, 1993, pursuant to Special Instructions dated June 16, 1993, under Group Number 1701, Oregon.

Timber in this area consists of fir, cedar, hemlock, pine, yew, alder, cherry, maple, oak, madrone, willow, ash and chinquapin.

The tie to the geodetic control station is reported as mean bearing and sea level distance.

UNITED STATES DEPARTMENT OF THE INTERIOR  
BUREAU OF LAND MANAGEMENT

Portland, Oregon March 3, 1995

This plat is strictly conformable to the approved field notes, and the survey, having been correctly executed in accordance with the requirements of law and the regulations of this Bureau, is hereby accepted.

For the Director

Chief Cadastral Surveyor of Oregon