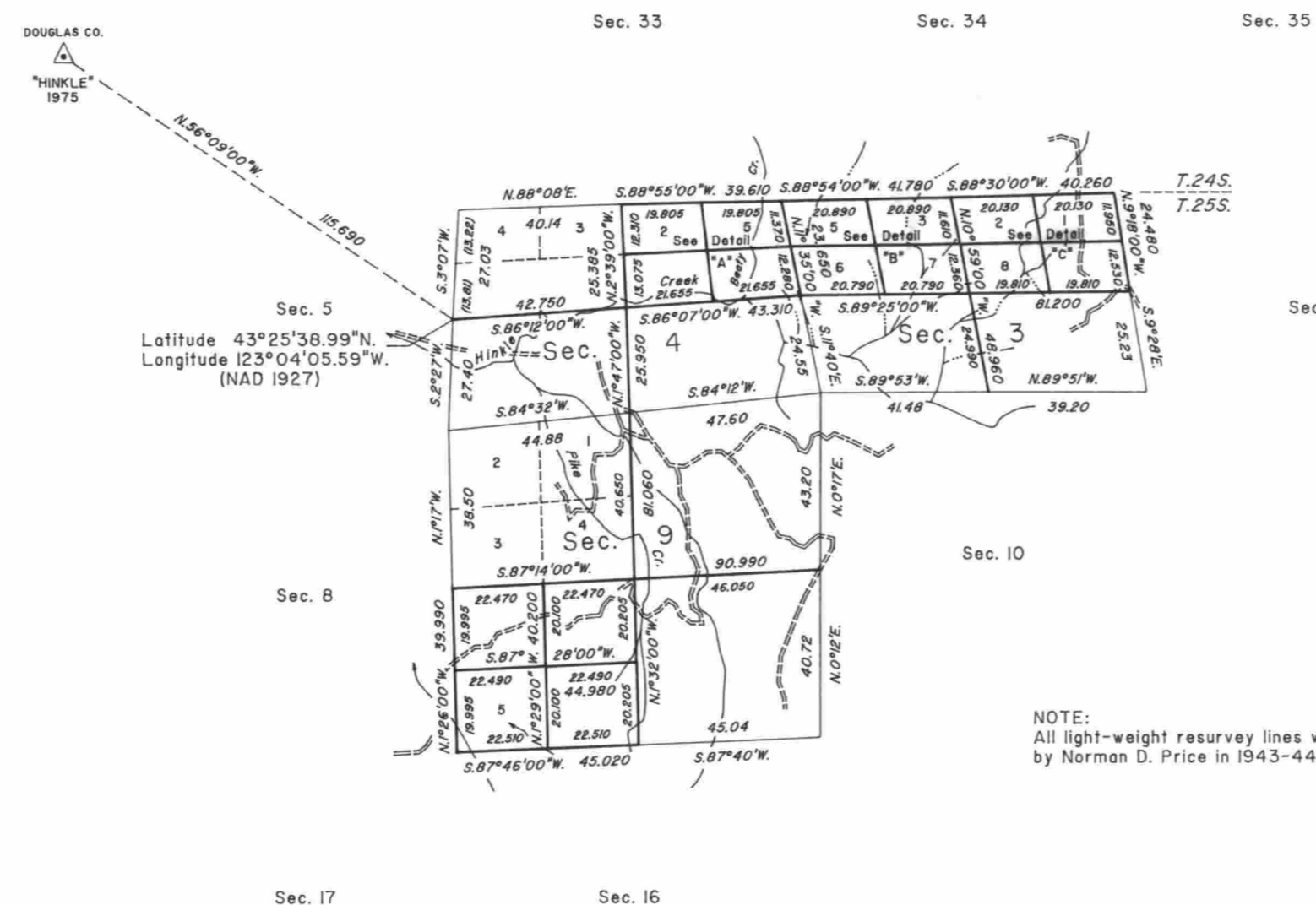


TOWNSHIP 25 SOUTH, RANGE 3 WEST, OF THE WILLAMETTE MERIDIAN, OREGON

DEPENDENT RESURVEY AND SUBDIVISION OF SECTIONS 3, 4, 9 AND 32



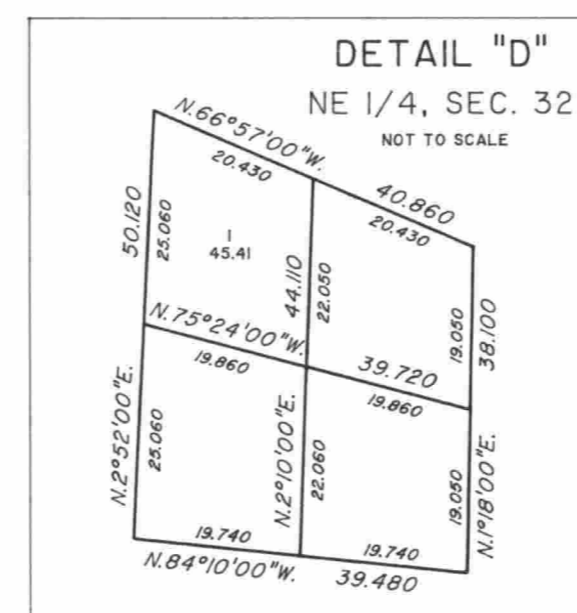
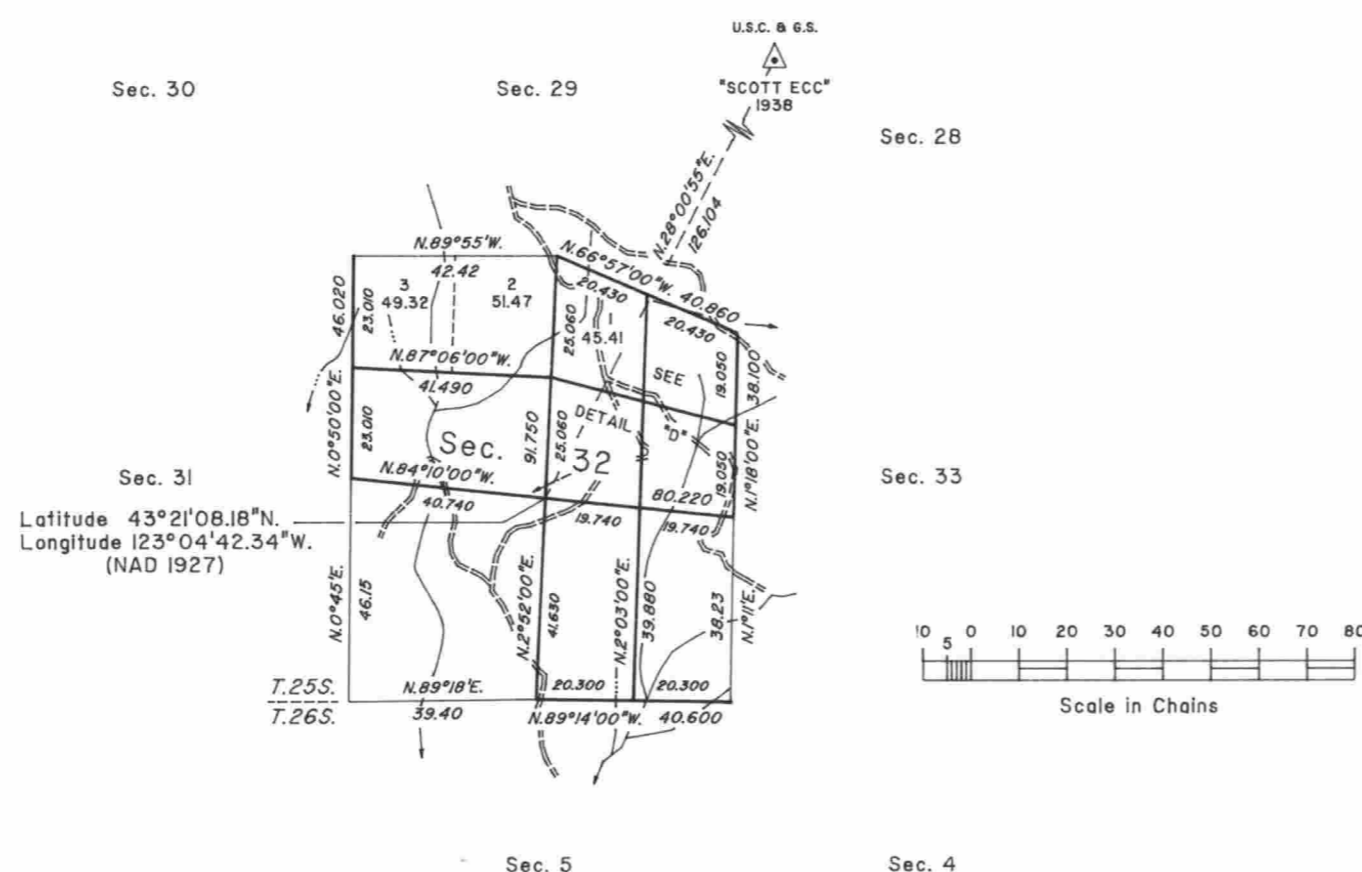
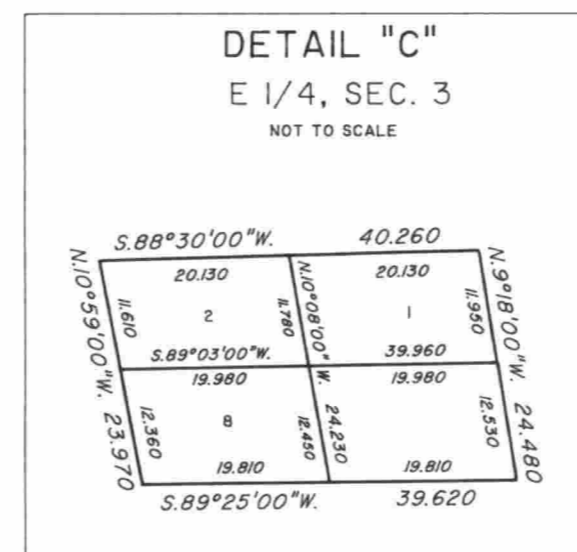
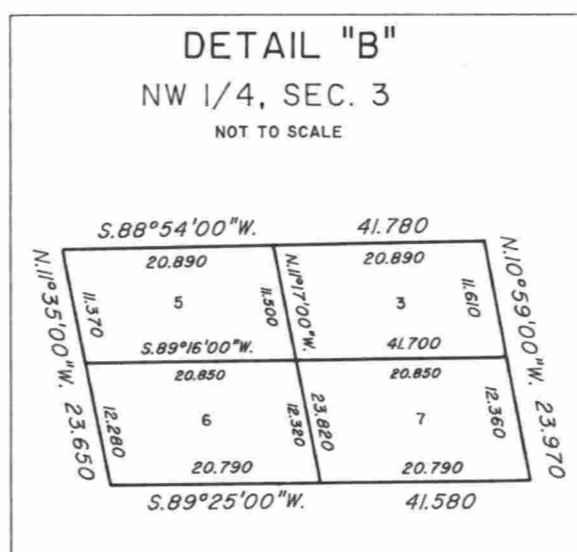
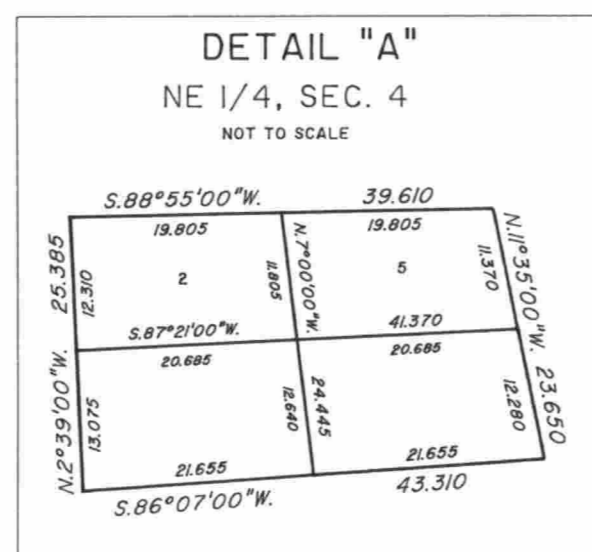
A history of surveys is contained in the field notes.

This plat represents a dependent resurvey of a portion of the south and north boundaries, and subdivisional lines, T. 25 S., R. 3 W., Willamette Meridian, Oregon, designed to restore the corners in their true original locations according to the best available evidence, and the subdivision of sections 3, 4, 9 and 32.

Except as shown hereon, the lottings and areas are as shown on the plats approved May 19, 1884 and July 24, 1945.

The survey was executed by Wayne L. Rogers, Dale T. Bedell and Boyd W. Peterson, Cadastral Surveyors, beginning June 22, 1987, and completed September 19, 1988, pursuant to Special Instructions dated May 20, 1987, and Supplemental Special Instructions dated July 15, 1988, under Group Number 1386, Oregon.

Timber in this area consists of fir, yew, hemlock, maple, cedar, chinquapin, ash, alder, pine, madrone and cherry.



UNITED STATES DEPARTMENT OF THE INTERIOR
BUREAU OF LAND MANAGEMENT

Portland, Oregon April 27, 1990

This plat is strictly conformable to the approved field notes, and the survey, having been correctly executed in accordance with the requirements of law and the regulations of this Bureau, is hereby accepted.

For the Director

Wayne M. Gardner

Chief Cadastral Surveyor of Oregon