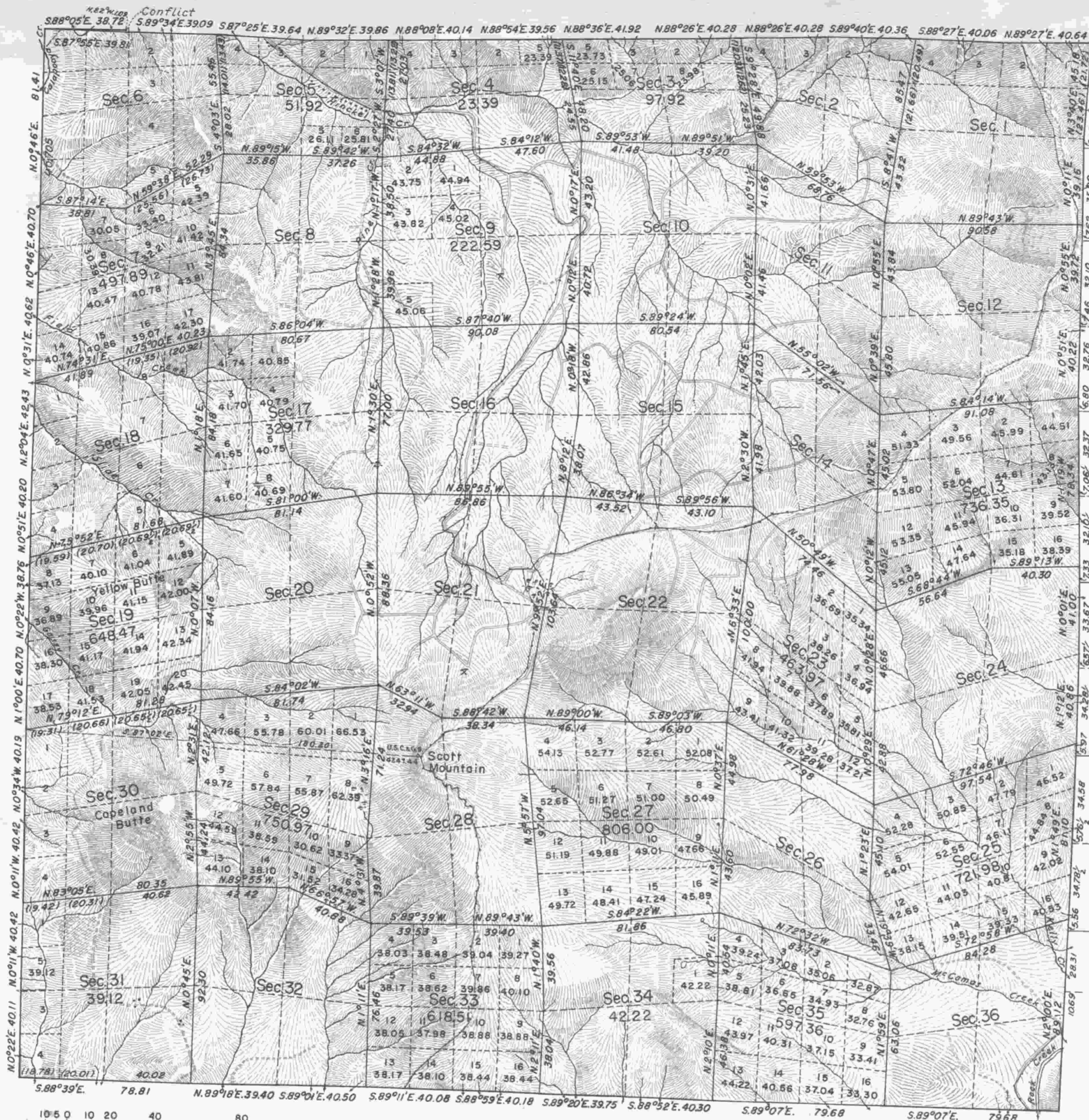


TOWNSHIP NO. 25 SOUTH, RANGE NO. 3 WEST, OF THE WILLAMETTE MERIDIAN, OREGON.

DEPENDENT RESURVEY



Sec. 6
Sec. 7
Sec. 18
Sec. 19
Sec. 30
Sec. 31

MEMORANDUM

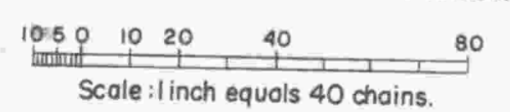
THIS PLAT OF THE RESURVEY OF T. 25 S., R. 3 W., DELINEATES A RETRACEMENT AND REESTABLISHMENT OF THE LINES OF THE ORIGINAL SURVEY AS SHOWN UPON THE PLATS APPROVED JULY 31, 1867 AND MAY 19, 1884, IN THEIR TRUE ORIGINAL POSITION ACCORDING TO THE BEST AVAILABLE EVIDENCE OF THE POSITION OF THE ORIGINAL CORNERS; ALL DIFFERENCES BETWEEN THE MEASUREMENTS SHOWN ON THE ORIGINAL PLATS AND THOSE DERIVED IN THE RETRACEMENT HAVE BEEN DISTRIBUTED PROPORTIONALLY BETWEEN ACCEPTED CORNERS IN ACCORDANCE WITH SURVEYING RULES; REFERENCE WILL BE MADE TO THE ORIGINAL PLATS FOR THE SHOWING OF THE AREAS AND MORE DETAILED DESCRIPTIONS OF THE VARIOUS SMALLER SUBDIVISIONS EXCEPT WHERE NEW AREAS ARE SHOWN HEREON.

MOST OF THIS TOWNSHIP IS COVERED WITH A HEAVY GROWTH OF TIMBER CONSISTING OF FIR, HEMLOCK, CEDAR, ALDER, MAPLE, YEW, CHINQUAPIN, MADRONA, PINE, DOGWOOD, AND OAK.

RESURVEY AUTHORIZED BY GENERAL LAND OFFICE LETTER "E" DATED MARCH 13, 1940.

Latitude 43° 20' 45" N.
Longitude 123° 06' 30" W.

Mean Magnetic Declination 21° 19' E.



Area Resurveyed 23,257.14 Acres.

UNITED STATES DEPARTMENT OF THE INTERIOR
GENERAL LAND OFFICE

LINES DESIGNATED	BY WHOM SURVEYED	GROUP NO.	DATE OF SPECIAL INSTRUCTIONS	WHEN SURVEYED	
				BEGUN	COMPLETED
EXTERIOR SUBDIVISIONAL	NORMAN D. PRICE	242	APRIL 5, 1940	JUNE 6, 1943	SEPT. 23, 1944

DENVER, COLORADO, JULY 24, 1945.
THIS PLAT OF TOWNSHIP NO. 25 SOUTH, RANGE NO. 3 WEST, OF THE WILLAMETTE MERIDIAN, OREGON, IS STRICTLY CONFORMABLE TO THE FIELD NOTES OF THE SURVEY THEREOF WHICH HAVE BEEN EXAMINED AND APPROVED.

WASHINGTON, D. C., JANUARY 7, 1946.
THE SURVEY REPRESENTED BY THIS PLAT HAVING BEEN CORRECTLY EXECUTED IN ACCORDANCE WITH THE REQUIREMENTS OF LAW AND THE REGULATIONS OF THIS OFFICE, IS HEREBY ACCEPTED.

W. H. ...
SUPERVISOR OF SURVEYS.

Joel Wainwright
ASSISTANT COMMISSIONER.