

# TOWNSHIP 25 SOUTH, RANGE 2 WEST, OF THE WILLAMETTE MERIDIAN, OREGON

## DEPENDENT RESURVEY

Date: 8/31/2016 By: JC  
This survey consists of:  
Map: T25S R02W 2016-1  
Narrative: VOL. 58  
Corner Rpt: PGS 23326-23346

DOUGLAS COUNTY  
SURVEYOR

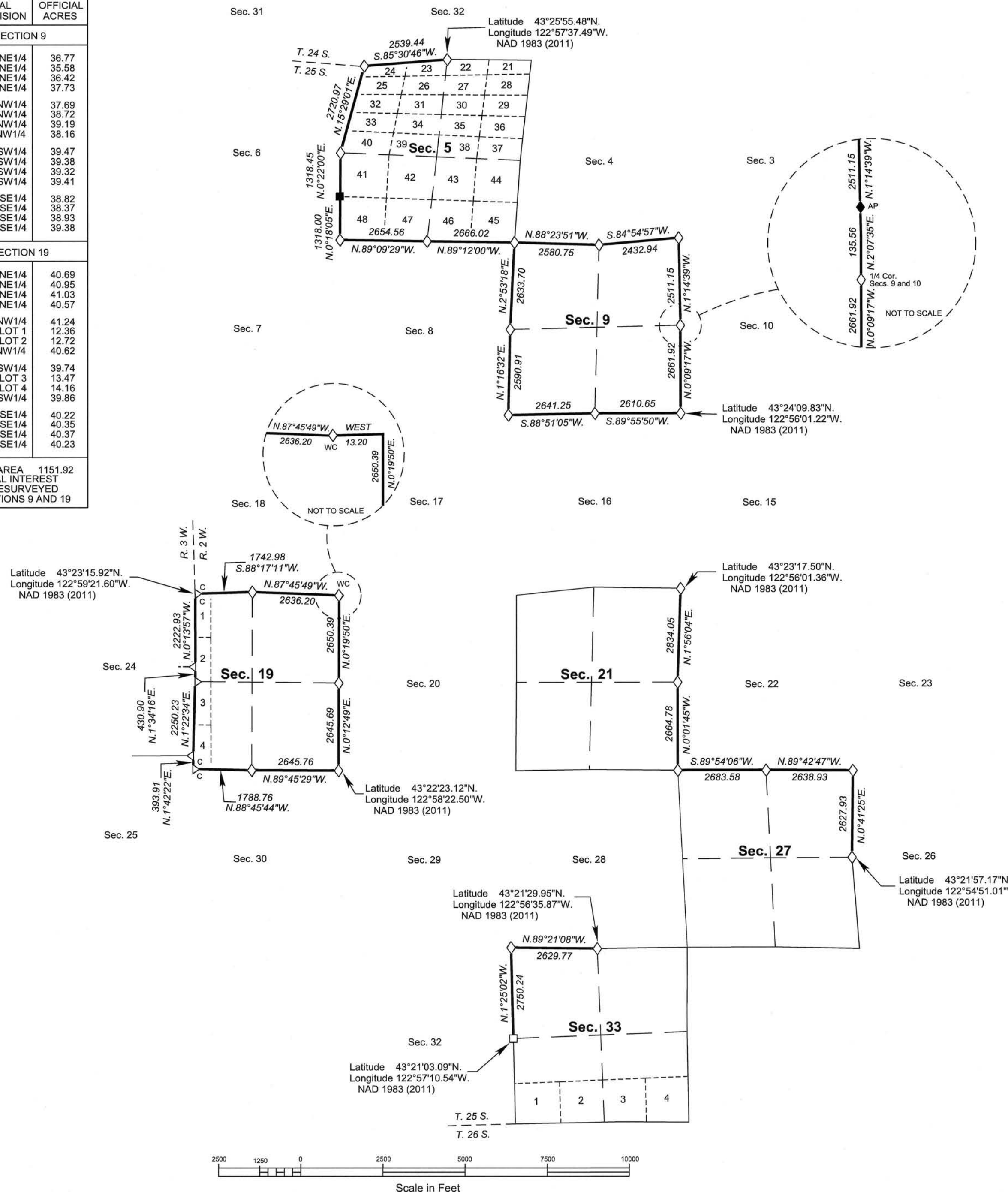
A history of surveys, corner descriptions, and other relevant information are contained in the field notes.

This plat represents the dependent resurvey of portions of the north and west boundaries and subdivisional lines, designed to restore the corners in their true original locations according to the best available evidence, Township 25 South, Range 2 West, Willamette Meridian, Oregon.

Official areas based on the measurements of this survey have been returned for Federal interest land where indicated. Aliquot part legal subdivisions retain their aliquot characteristics and refer to precisely the same land as that which was previously identified by its original survey description. A lot can only be subdivided by survey or supplemental plat. Except as indicated hereon, the lottings and areas are as shown on the plat approved May 6, 1901.

Survey executed by Richard J. Dieckmann, Cadastral Surveyor, beginning August 12, 2014, and completed April 20, 2015, pursuant to special instructions approved August 5, 2014, for Group No. 2749, Oregon.

LEGAL SUBDIVISION	OFFICIAL ACRES
<b>SECTION 9</b>	
NE1/4 NE1/4	36.77
NW1/4 NE1/4	35.58
SW1/4 NE1/4	36.42
SE1/4 NE1/4	37.73
NE1/4 NW1/4	37.69
NW1/4 NW1/4	38.72
SW1/4 NW1/4	39.19
SE1/4 NW1/4	38.16
NE1/4 SW1/4	39.47
NW1/4 SW1/4	39.38
SW1/4 SW1/4	39.32
SE1/4 SW1/4	39.41
NE1/4 SE1/4	38.82
NW1/4 SE1/4	38.37
SW1/4 SE1/4	38.93
SE1/4 SE1/4	39.38
<b>SECTION 19</b>	
NE1/4 NE1/4	40.69
NW1/4 NE1/4	40.95
SW1/4 NE1/4	41.03
SE1/4 NE1/4	40.57
NE1/4 NW1/4	41.24
LOT 1	12.36
LOT 2	12.72
SE1/4 NW1/4	40.62
NE1/4 SW1/4	39.74
LOT 3	13.47
LOT 4	14.16
SE1/4 SW1/4	39.86
NE1/4 SE1/4	40.22
NW1/4 SE1/4	40.35
SW1/4 SE1/4	40.37
SE1/4 SE1/4	40.23
TOTAL AREA 1151.92 FEDERAL INTEREST LAND RESURVEYED IN SECTIONS 9 AND 19	



**LEGEND**

- ◇ Original corner previously remonumented
- ◆ Original corner remonumented this survey
- Corner previously established or reestablished
- Corner previously established or reestablished; remonumented this survey

UNITED STATES DEPARTMENT OF THE INTERIOR  
BUREAU OF LAND MANAGEMENT

Portland, Oregon

This plat is strictly conformable to the approved field notes, and the survey, having been correctly executed in accordance with the requirements of law and the regulations of this Bureau, is hereby accepted.

For the Director

*Mary J. M. Hartzel*

Chief Cadastral Surveyor of Oregon

June 17, 2016

Date