

TOWNSHIP 25 SOUTH, RANGE 2 WEST, OF THE WILLAMETTE MERIDIAN, OREGON

SHEET 1 OF 2

DEPENDENT RESURVEY AND SUBDIVISION OF SECTION 26

FILED
 Date: 3/5/2012 By: JC
 This survey consists of:
 Map: PLAT 2011-1
 Narrative: VOL 57 PAGES
 Corner Rpt: 22778-22807
 DOUGLAS COUNTY
 SURVEYOR

A history of surveys, corner descriptions and other relevant information is contained in the field notes.

Sec. 5

This plat represents the dependent resurvey of a portion of the south and west boundaries and subdivisional lines, designed to restore the corners in their true original locations according to the best available evidence, and the subdivision of section 26, T. 25 S., R. 2 W., Willamette Meridian, Oregon.

Official areas based on the measurements of this survey have been returned for Federal interest land where indicated. Aliquot part legal subdivisions retain their aliquot characteristics and refer to precisely the same land as that which was previously identified by its original survey or description. A lot can only be subdivided by survey or supplemental plat. Except as indicated hereon, the lottings and areas are as shown on the plat approved May 6, 1901 and the plat accepted March 7, 1977.

Survey executed by A. Bert Skeesick, Cadastral Surveyor, beginning June 8, 2010 and completed June 8, 2011, pursuant to special instructions dated April 21, 2010 for Group No. 2317, Oregon.

Sec. 8

LEGEND

- ◊ Original corner previously remonumented
- Corner previously established or reestablished; remonumented this survey

UNITED STATES DEPARTMENT OF THE INTERIOR
 BUREAU OF LAND MANAGEMENT

Portland, Oregon

This plat is strictly conformable to the approved field notes, and the survey, having been correctly executed in accordance with the requirements of law and the regulations of this Bureau, is hereby accepted.

For the Director

Mary J. M. Hartzel

Chief Cadastral Surveyor of Oregon

December 27, 2011

Date

Sec. 1

Sec. 12

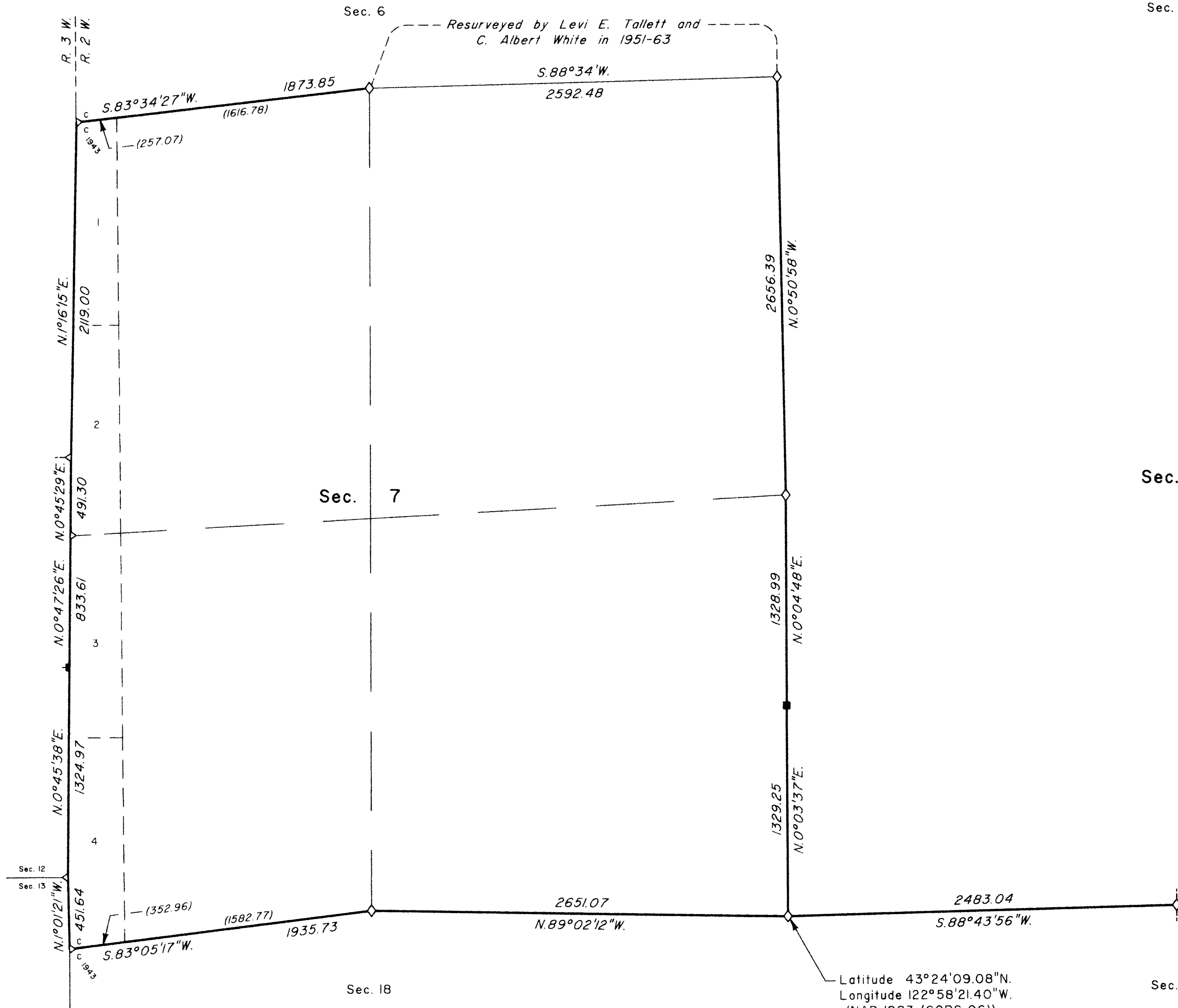
Sec. 13

Sec. 6

Sec. 7

Sec. 18

Sec. 17



LEGAL SUBDIVISION	OFFICIAL ACRES
SECTION 7	
LOT 1	8.07
LOT 2	8.88
LOT 3	9.56
LOT 4	10.36
NE 1/4 NE 1/4	39.96
NW 1/4 NE 1/4	40.51
SW 1/4 NE 1/4	40.87
SE 1/4 NE 1/4	40.32
NE 1/4 NW 1/4	49.21
SE 1/4 NW 1/4	49.16
NE 1/4 SW 1/4	46.31
SE 1/4 SW 1/4	45.85
NE 1/4 SE 1/4	39.69
NW 1/4 SE 1/4	38.31
SW 1/4 SE 1/4	38.35
SE 1/4 SE 1/4	39.73
TOTAL AREA	545.14
FEDERAL INTEREST LAND RESURVEYED	



Scale in Feet

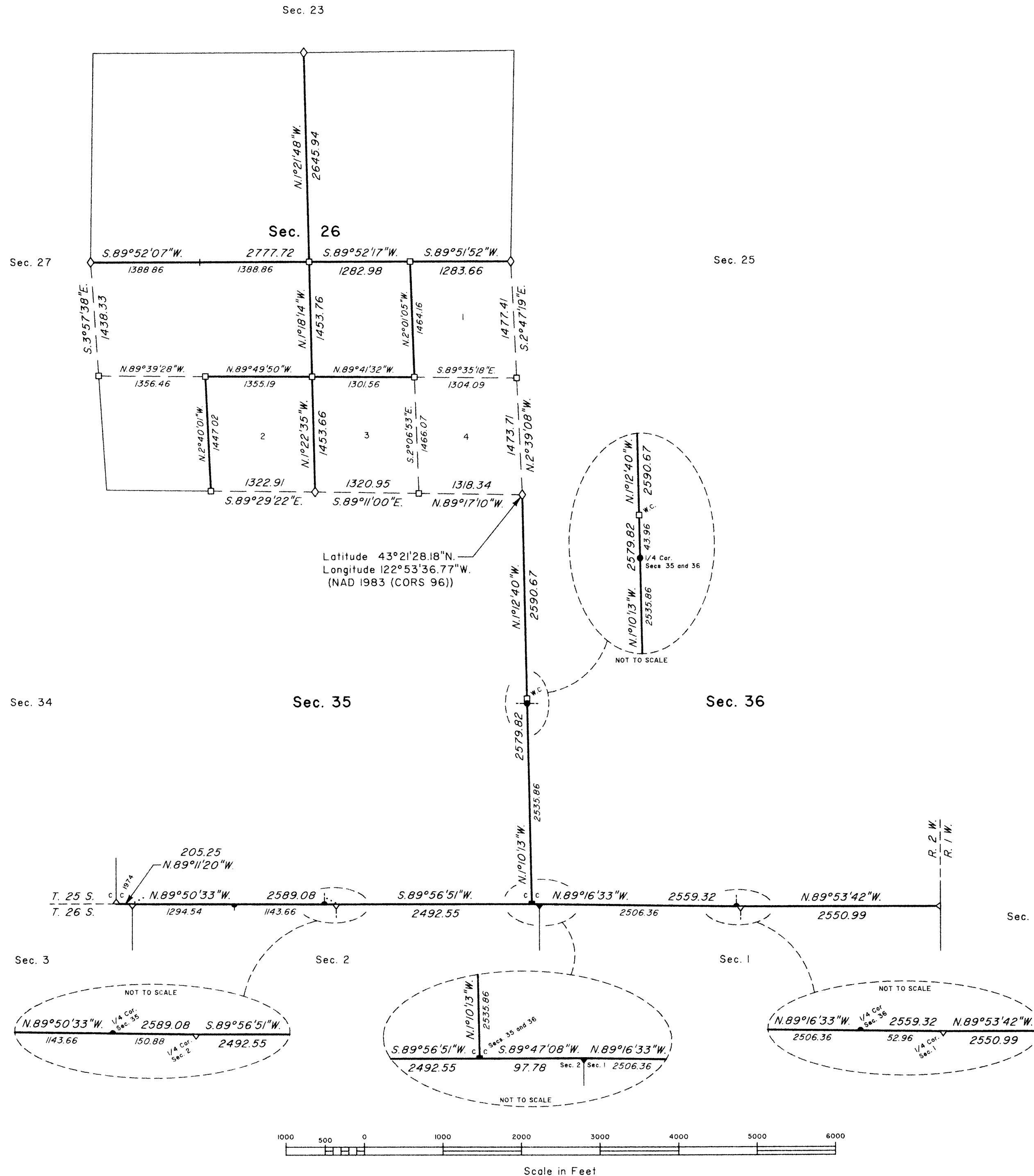
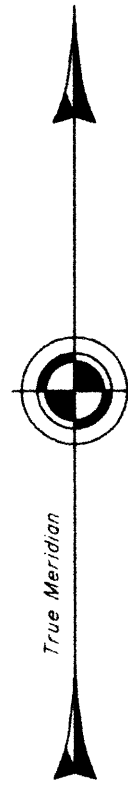
OFFICIALLY FILED: 1/12/2012

TOWNSHIP 25 SOUTH, RANGE 2 WEST, OF THE WILLAMETTE MERIDIAN, OREGON

DEPENDENT RESURVEY AND SUBDIVISION OF SECTION 26

SHEET 2 OF 2

FILED
 Date: 3/5/2012 By: JC
 This survey consists of:
 Map: PLAT 2011-1
 Narrative: VOL 57 PAGES
 Corner Rpt: 22778-22807
 DOUGLAS COUNTY
 SURVEYOR



LEGEND

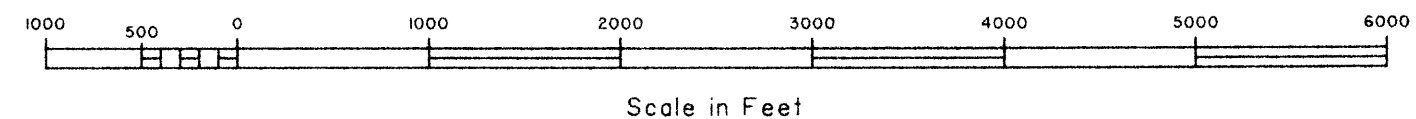
- ◊ Original corner previously remonumented
- ◆ Original corner remonumented this survey
- Corner previously established or reestablished
- Corner previously established or reestablished; remonumented this survey
- Corner established or reestablished this survey
- + Corner point calculated, no monument set

UNITED STATES DEPARTMENT OF THE INTERIOR
 BUREAU OF LAND MANAGEMENT
 Portland, Oregon

This plat is strictly conformable to the approved field notes, and the survey, having been correctly executed in accordance with the requirements of law and the regulations of this Bureau, is hereby accepted.

For the Director
Mary J. M. Henthel
 Chief Cadastral Surveyor of Oregon

December 27, 2011
 Date



OFFICIALLY FILED: 1/12/2012