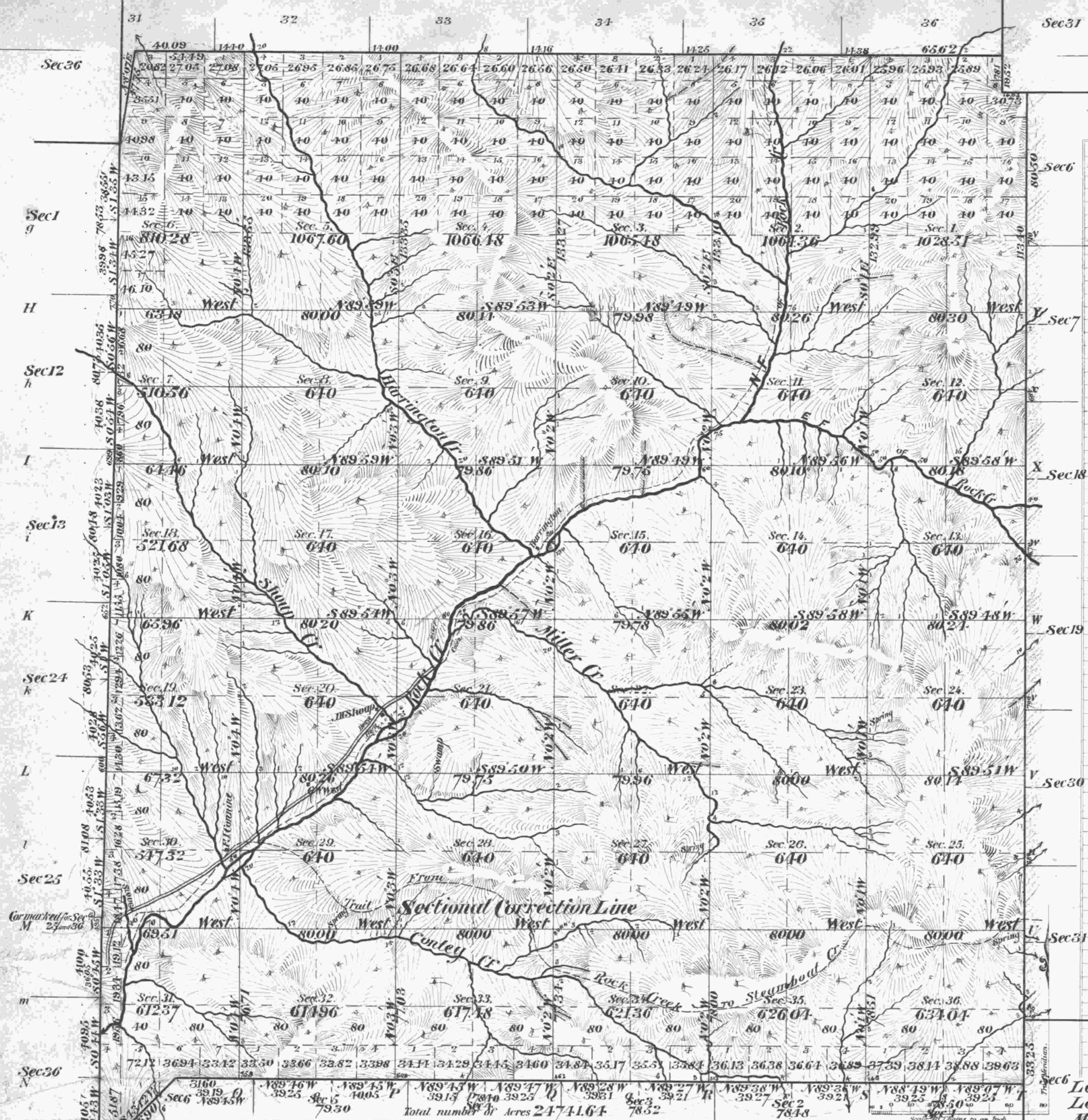


# Township N<sup>o</sup> 25 South. Range N<sup>o</sup> 2 West of the Willamette Meridian Oregon.



Meanders of											
Posts	Courses	Ch <sup>o</sup> Lk <sup>s</sup>	Posts	Courses	Ch <sup>o</sup> Lk <sup>s</sup>	Posts	Courses	Ch <sup>o</sup> Lk <sup>s</sup>	Posts	Courses	Ch <sup>o</sup> Lk <sup>s</sup>

**R E S E R V E**

Note:  
The total area of Sec. 1 should be 1036.32 - the area of Lot 1 (7.8) acres having been omitted from the total as shown on this plat. See Commissioner's letter E. B. W. dated Nov. 30, 1927.

**F O R E S T**

**C A S C A D E**

ACCEPTED BY THE HON. COMMISSIONER G. L. O. March 7, 1902

Surveys Designated	By Whom Surveyed	Date of Contract	Amount of Survey M. Ch <sup>o</sup> Lk <sup>s</sup>	When Surveyed	N <sup>o</sup> of Contract
Township Lines					
Subdivisions					
Connections					
Resurvey of E. B. W. by J. M. Quinn	J. M. Quinn	April 5, 1883	177.27	1883	466
Original Survey of W. Bay	Laban H. Wheeler	April 7, 1883		1883	467

The above Map of Township N<sup>o</sup> 25 South of Range N<sup>o</sup> 2 West of the Willamette Meridian, Oregon is strictly conformable to the field notes of the survey thereof on file in this Office, which have been examined and approved.

Surveyor General's Office, Robert A. Habersham  
Portland Oregon, May 6, 1901  
Sur. Gen. for Oregon

Latitude 43° 20' N  
Longitude 122° 51' W  
Mean mag dec' 18° 44' E } All cor to Tps 25 and 26 S. Rgs 1 and 2 W