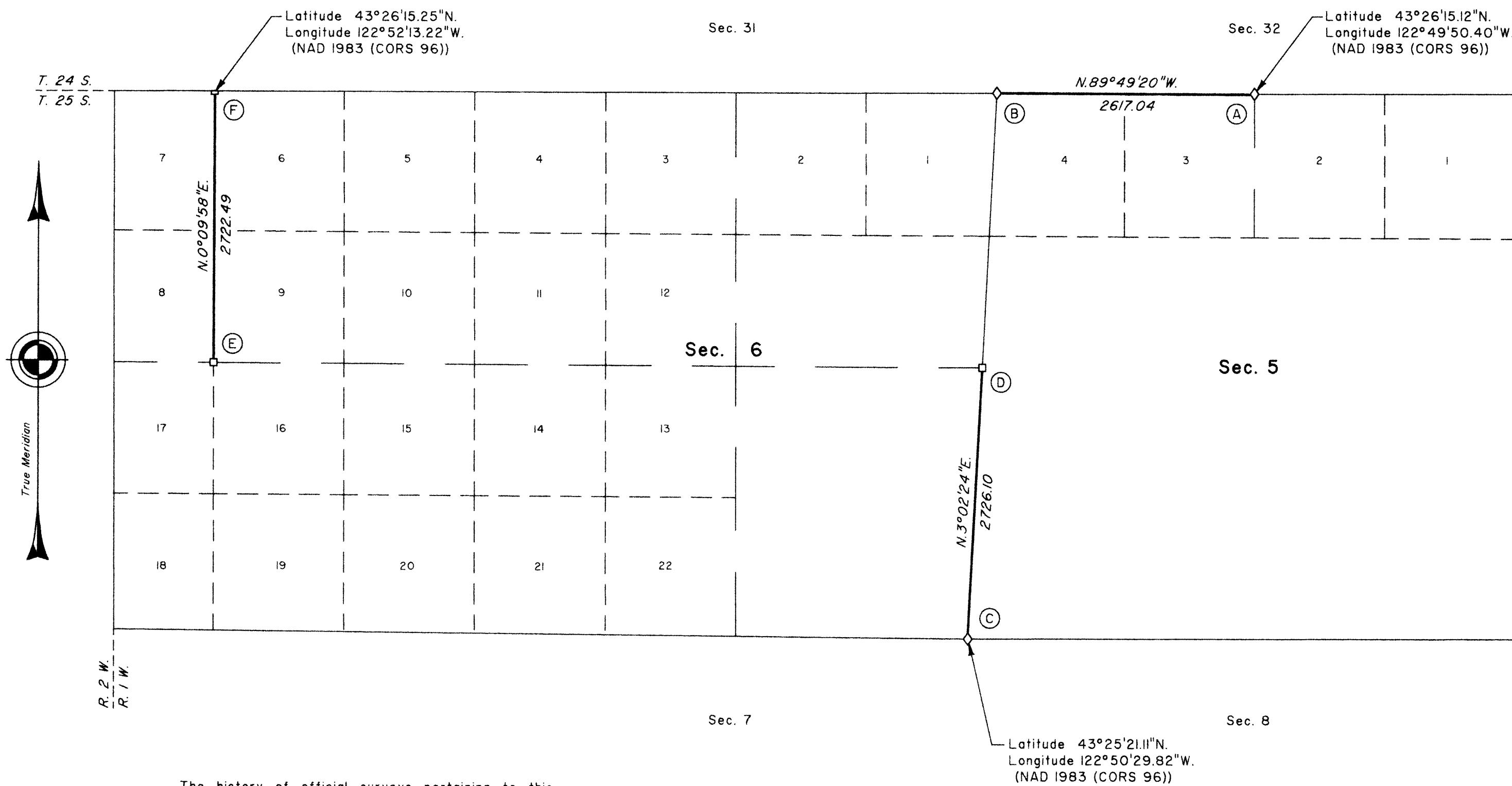


FILED
 Date: 1/29/2013 By: JC
 This survey consists of:
 Map: VOL. 58 PAGE
 Narrative: 22945-22946
 Corner Rpt: THIS PLAT REPRESENTS THE ENTIRE RECORD OF THE DEPENDENT RESURVEY
 DOUGLAS COUNTY SURVEYOR

TOWNSHIP 25 SOUTH, RANGE I WEST, OF THE WILLAMETTE MERIDIAN, OREGON

SHEET 1 OF 2

RETRACEMENT



This plat constitutes the entire record of the retracement of a portion of the north boundary, subdivisional lines, and subdivision of section lines of section 6, Township 25 South, Range I West, Willamette Meridian, Oregon.

The directions of the lines are based on the true meridian as determined by a combination of Global Positioning System (GPS) techniques and direct solar observation, carried forward by sustained angulation using conventional survey techniques. All measurements along the lines were derived through the use of GPS and conventional survey techniques. Measured distances and directions have been adjusted by computer software that incorporates a least squares adjustment routine. The adjusted mean bearings and mean horizontal ground elevation distances are reported to the nearest second and 0.01 foot.

The lines of the official original surveys and resurveys were retraced and search was made for all corners, lines, other calls of the record, and, where available, collateral evidence of local surveys and corners. Identified corners were perpetuated in their original positions. The retracement data were thoroughly verified and only the true line field data are given hereon.

Each new bearing tree has a 2 1/2 inch x 1/4 inch magnetic nail (Mag Nail) driven at the base on right side center, unless otherwise noted in the corner description.

Only those lines bounding Federal interest land were blazed.

The geographic positions shown hereon were determined by ties from temporary GPS control points, utilizing dual frequency, carrier phase GPS receivers, and processed using the National Geodetic Survey's Online Positioning User Service (OPUS).

The survey was executed in accordance with the specification set forth in the Manual of Surveying Instructions (2009), and the special instructions approved April 28, 2010, for Group No. 2500, Administrative File No. 1106, Oregon, by Kenneth W. Saveland, Cadastral Surveyor, beginning September 29, 2011, and completed November 17, 2011. He was assisted by Robert NMI Durning and Thomas A. Hollamon, Surveying Technicians.

The history of official surveys pertaining to this retracement is as follows:

In 1896, Carl S. Nicklin, U.S. Deputy Surveyor, surveyed the south boundary of T. 24 S., R. 1 W., as shown on the official plat of survey approved August 10, 1897.

In 1900, Hezekiah H. Johnson, U.S. Deputy Surveyor, surveyed the subdivisional lines, as shown on the official plat of survey approved May 6, 1901.

In 1981, James E. Jelley, Cadastral Surveyor, resurveyed a portion of the north boundary and subdivisional lines, and subdivided section 6, as shown on the official plat of survey accepted June 29, 1984.

The following local surveys filed in the Douglas County Surveyor's Office are referred to in subsequent corner description and are referenced by surveyor's last name, official title or Professional Land Surveyor (PLS) No., and year.

Date	Name and Registration Number	File Number
1960	Douglas County Surveyor's Office	CS 52/30
1960	James W. Byron, Dep. Co. Surveyor	CS 52/30
1966	Douglas County Surveyor's Office	CS 52/30
1978	Douglas County Surveyor's Office	CS 60/11

I, Kenneth W. Saveland, Cadastral Surveyor, HEREBY CERTIFY upon honor, that in pursuance of special instructions bearing the approval date of the 28th day of April, 2010, and assignment instructions bearing the date of the 28th day of July, 2011, I have retraced a portion of the north boundary, subdivisional lines, and subdivision of section lines of section 6, Township 25 South, Range I West, Willamette Meridian, Oregon, which is represented upon this plat as having been executed by me and under my direction; and that said survey has been made in strict conformity with said special instructions, the Manual of Surveying Instructions, and in the specific manner described on this plat.

Kenneth W. Saveland
 Cadastral Surveyor

OCTOBER 15, 2012
 Date

LEGEND

- ◊ Original corner previously remonumented
- Corner previously established or reestablished

UNITED STATES DEPARTMENT OF THE INTERIOR
 BUREAU OF LAND MANAGEMENT

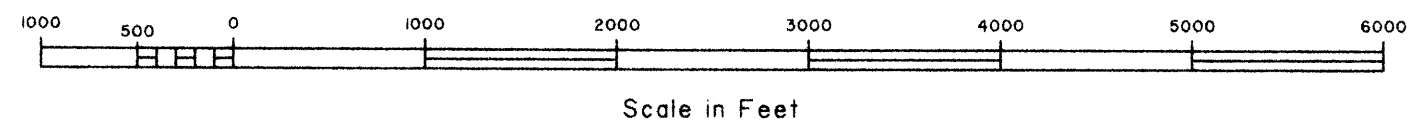
Portland, Oregon

The survey represented by this plat, having been correctly executed in accordance with the requirements of law and the regulations of this Bureau, is hereby accepted.

For the Director

Maury J. M. Hartel
 Chief Cadastral Surveyor of Oregon

OCTOBER 25, 2012
 Date



OFFICIALLY FILED: 1/19/2013

TOWNSHIP 25 SOUTH, RANGE I WEST, OF THE WILLAMETTE MERIDIAN, OREGON

SHEET 2 OF 2

RETRACEMENT

- (A) The 1/4 sec. cor. of secs. 5 and 32, on the N. bdy. of the Tp., perpetuated by the Douglas County Surveyor's Office in 1966 and 1978, monumented with an iron post, 1 1/4 ins. diam., firmly set, flush with the ground surface, with brass cap mkd.

COUNTY SURVEYORS OFFICE

T 24 S
S 32 R
1/4 ——— I
S 5 W
T 25 S
RESET 1978,
1966

from which the remains of the original bearing trees

A roothole bears S. 74° E., 18.5 ft. dist., downhill of which is an uprooted fir snag, 51 ins. diam., with no marks visible on a partially healed blaze.

A decayed cedar stump, size indeterminate, bears N. 43° W., 5.3 ft. dist., with no marks visible on a partially healed blaze.

and the remains of a bearing tree mkd. by the Douglas County Surveyor's Office in 1966

A split hemlock stump, size indeterminate, bears S. 46° E., 32.6 ft. dist., with scribe marks BT visible on an open blaze.

and an accessory set by the Douglas County Surveyor's Office in 1978

An iron spike, 1/2 in. square, bears S. 86 1/2° W., 32.4 ft. dist., driven flush with the top and near the center of a sawed sugar pine stump, 51 ins. diam., with a convex head mkd. BO-I.

and new bearing trees

A fir, 7 ins. diam., bears S. 27° E., 33.7 ft. dist., mkd. 1/4 S5 BT.

A hemlock, 11 ins. diam., bears N. 85 1/4° W., 21.7 ft. dist., mkd. 1/4 S32 BT.

- (B) The cor. of secs. 5, 6, 31, and 32, on the N. bdy. of the Tp., monumented with an iron post, 1 1/4 ins. diam., firmly set, projecting 8 ins. above ground, with brass cap mkd.

COUNTY SURVEYORS OFFICE

T 23 S RIW
S 31 | S 32
S 6 | S 5
T 24 S
1966

from which the remains of original bearing trees

A roothole bears N. 63° E., 14.5 ft. dist., downhill of which is a fallen, decayed, hemlock snag, size indeterminate, with no marks visible.

A roothole bears S. 55° E., 5.9 ft. dist., downhill of which is a fallen, decayed, hemlock snag, size indeterminate, with no marks visible.

A sawed fir stump, 18 ins. diam., bears S. 85° W., 46.2 ft. dist., with scribe marks R W and other fragmentary scribe marks visible on an open blaze. (Record, S. 87 1/2° W.)

A roothole bears N. 59° W., 40.9 ft. dist., downhill of which is an uprooted, decayed cedar stump, size indeterminate, with no marks visible.

and bearing trees mkd. by the Douglas County Surveyor's Office in 1966

A hemlock, 20 ins. diam., bears N. 27° E., 59.7 ft. dist., with a healed double blaze.

A yew, 14 ins. diam., bears S. 27° E., 23.8 ft. dist., with scribe marks T25S RIW S5 CS BT visible on a partially healed blaze.

A yew, 12 ins. diam., bears S. 64° W., 16.8 ft. dist., with scribe marks T25S RIW S6 CS BT visible on a partially healed blaze.

A hemlock, 22 ins. diam., bears N. 73° W., 52.1 ft. dist., with a healed double blaze.

Corner is located 380 ft. W. of a graveled road, 12 ft. wide, bears N. 70° W. and S. 70° E.

- (C) The cor. of secs. 5, 6, 7, and 8, monumented with an iron post, 1 1/4 ins. diam., firmly set, projecting 5 ins. above a mound of stone, 5 ft. base, 2 ft. high, with brass cap mkd.

COUNTY SURVEYORS OFFICE

T 25 S RIW
S 6 | S 5
S 7 | S 8
1960

from which the remains of an original bearing tree

A hollow, decayed cedar stump, size indeterminate, bears S. 34° W., 32.3 ft. dist., with no marks visible.

and the remains of bearing trees mkd. by Byron, Deputy County Surveyor, in 1960

A fir, 17 ins. diam., bears S. 82° E., 44.6 ft. dist., with a healed blaze. (Record, S. 80 1/2° E.)

A decayed chinquapin snag, size indeterminate, bears S. 66° W., 31.7 ft. dist., with no marks visible.

A cedar snag, 14 ins. diam., bears N. 36 1/4° W., 30.1 ft. dist., with fragmentary scribe marks visible on a partially healed blaze. (Record, N. 34° W., 35.6 ft. dist.)

and a bearing tree mkd. by person(s) unknown, reported by Jelley

A burnt fir snag, 15 ins. diam., bears N. 49° E., 38.9 ft. dist., with scribe marks T25S RIW S visible on a partially healed blaze.

and new bearing trees

A fir, 12 ins. diam., bears N. 26 3/4° E., 14.1 ft. dist., mkd. T25S RIW S5 BT.

A fir, 10 ins. diam., bears S. 35 1/4° W., 21.5 ft. dist., mkd. T25S RIW S7 BT.

A fir, 14 ins. diam., bears N. 31 1/4° W., 10.6 ft. dist., mkd. T25S RIW S6 BT.

- (D) The 1/4 sec. cor. of secs. 5 and 6, monumented with an aluminum post, 2 1/2 ins. diam., firmly set, projecting 2 ins. above ground, with aluminum cap mkd. (Record, iron post with brass cap)

T 25 S RIW
1/4
S 6 | S 5
1981

from which the bearing trees mkd. by Jelley

A cedar, 23 ins. diam., bears S. 78° E., 29.4 ft. dist., with a healed blaze.

A hemlock, 20 ins. diam., bears N. 59 1/2° W., 90.8 ft. dist., with a healed blaze.

Corner is located 10 ft. S. of a draw, drains N. 65° E.

- (E) The center 120 1/16 sec. cor. of sec. 6, monumented with an iron post, 2 1/2 ins. diam., firmly set, projecting 1 in. above a collar of stone, with brass cap mkd.

1/16
C ——— 120
S 6
1981

from which the bearing trees mkd. by Jelley

A fir, 15 ins. diam., bears S. 51 1/2° W., 12.6 ft. dist., with a healed blaze. (Record, 13.9 ft. dist.)

A fir, 20 ins. diam., bears N. 2° W., 25.1 ft. dist., with a healed blaze. (Record, N. 6° W.)

Corner is located in the bottom of a draw, drains N. 80° E.

- (F) The 120 1/16 sec. cor. of sec. 6 only, on the N. bdy. of the Tp., monumented with an iron post, 2 1/2 ins. diam., firmly set, projecting 4 ins. above ground, with brass cap mkd.

120 1/16 S 6
1981

from which the bearing trees mkd. by Jelley

A fir, 16 ins. diam., bears S. 81° E., 9.9 ft. dist., with a healed double blaze.

A fir, 7 ins. diam., bears S. 47 1/2° W., 15.8 ft. dist., with a healed double blaze.

FILED

Date: 1/29/2013 By: JC

This survey consists of:

Map: VOL. 58 PAGE

Narrative: 22945-22946

Corner Rpt: THIS PLAT REPRESENTS THE ENTIRE RECORD OF THE DEPENDENT RESURVEY

DOUGLAS COUNTY SURVEYOR

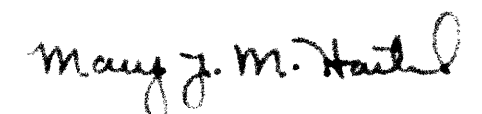
OFFICIALLY FILED: 1/19/2013

UNITED STATES DEPARTMENT OF THE INTERIOR
BUREAU OF LAND MANAGEMENT

Portland, Oregon

The survey represented by this plat, having been correctly executed in accordance with the requirements of law and the regulations of this Bureau, is hereby accepted.

For the Director



Chief Cadastral Surveyor of Oregon

October 25, 2012

Date