

TOWNSHIP 25 SOUTH, RANGE 1 WEST, OF THE WILLAMETTE MERIDIAN, OREGON

RETRACEMENT

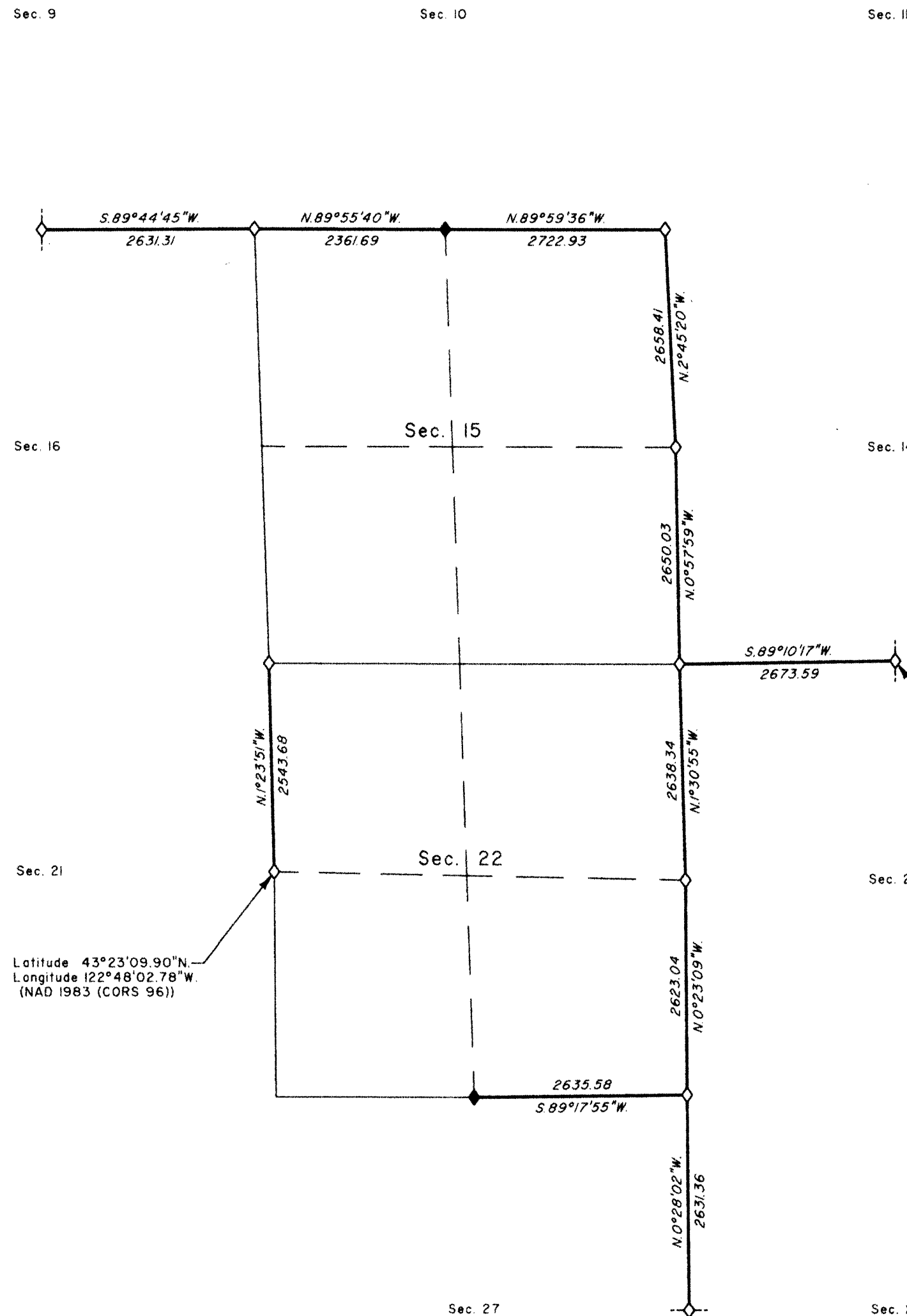
FILED
 Date: 4/5/2012 By: JC
 This survey consists of:
 Map: PLAT 2012-1: T25-3W
 Narrative: VOL. 57
 Corner-Run/PSS 22810-22824
 DOUGLAS COUNTY
 SURVEYOR

A history of surveys, corner descriptions and other relevant information is contained in the field notes.

This plat represents the retracement of a portion of the subdivisional lines, T. 25 S., R. 1 W., Willamette Meridian, Oregon.

Except as indicated hereon, the lottings and areas are as shown on the plat approved May 6, 1901, and plat accepted May 14, 1981.

Survey executed by Kenneth W. Saveland, Cadastral Surveyor, beginning August 19, 2010 and completed April 27, 2011, pursuant to special instructions dated April 21, 2010 for Group No. 2500, Administrative File No. 1006, Oregon.



LEGEND	
◇	Original corner previously remonumented
◆	Original corner remonumented this survey

UNITED STATES DEPARTMENT OF THE INTERIOR
 BUREAU OF LAND MANAGEMENT

Portland, Oregon

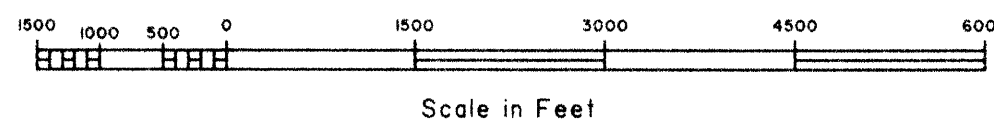
This plat is strictly conformable to the approved field notes, and the survey, having been correctly executed in accordance with the requirements of law and the regulations of this Bureau, is hereby accepted.

For the Director

Mary J. M. Harts

Chief Cadastral Surveyor of Oregon

February 1, 2012
 Date



OFFICIALLY FILED: 2/22/2012