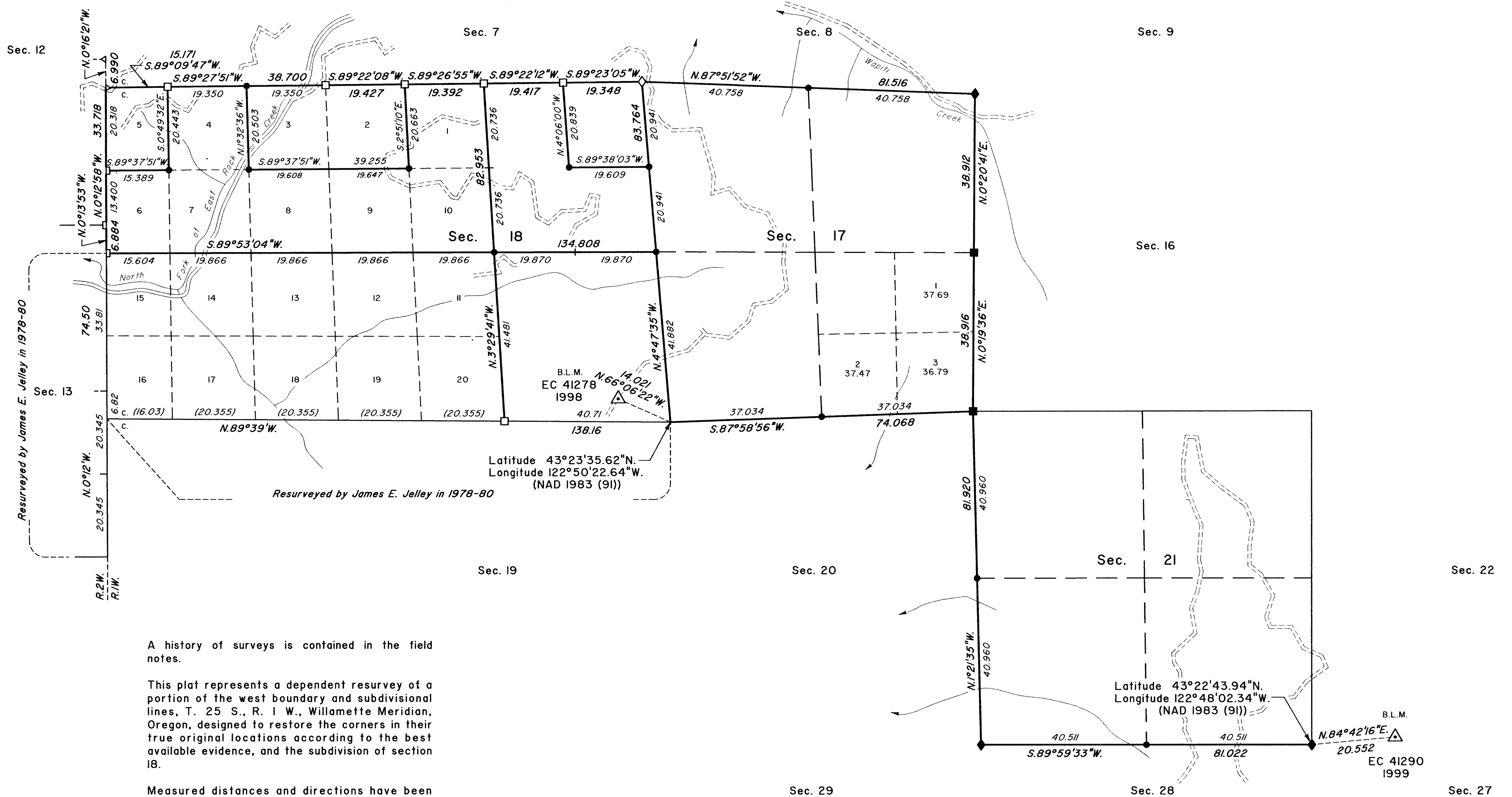


TOWNSHIP 25 SOUTH, RANGE 1 WEST, OF THE WILLAMETTE MERIDIAN, OREGON

DEPENDENT RESURVEY AND SUBDIVISION OF SECTION 18



A history of surveys is contained in the field notes.

This plat represents a dependent resurvey of a portion of the west boundary and subdivisional lines, T. 25 S., R. 1 W., Willamette Meridian, Oregon, designed to restore the corners in their true original locations according to the best available evidence, and the subdivision of section 18.

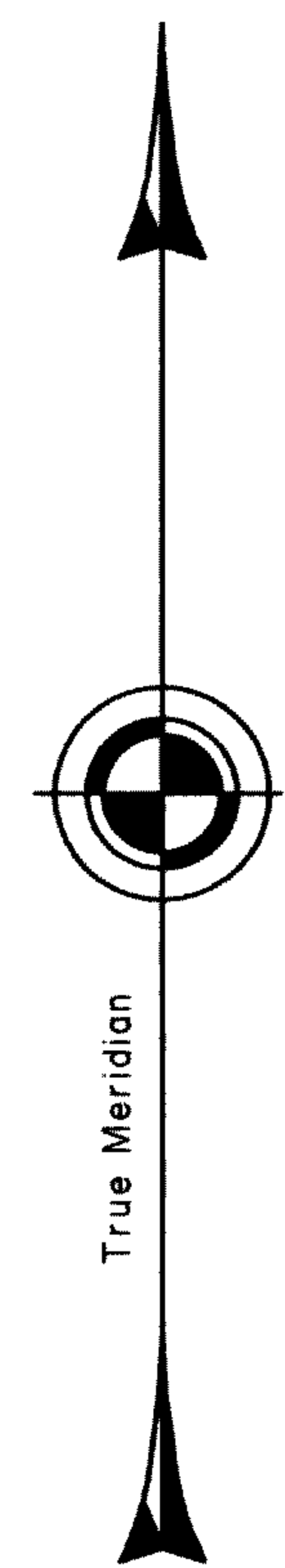
Measured distances and directions have been adjusted by Cadastral Measurement Management (CMM), computer software that incorporates a least squares adjustment routine. The adjusted bearings and distances are reported to the nearest second and 0.01 foot.

Except as shown hereon, the lottings and areas are as shown on the plat approved May 6, 1901.

The survey was executed by A. Bert Skeesick and Daniel E. Weller, Cadastral Surveyors, beginning September 1, 1998, and completed September 21, 1999, pursuant to Special Instructions dated June 3, 1998, under Group Number 1888, Oregon.

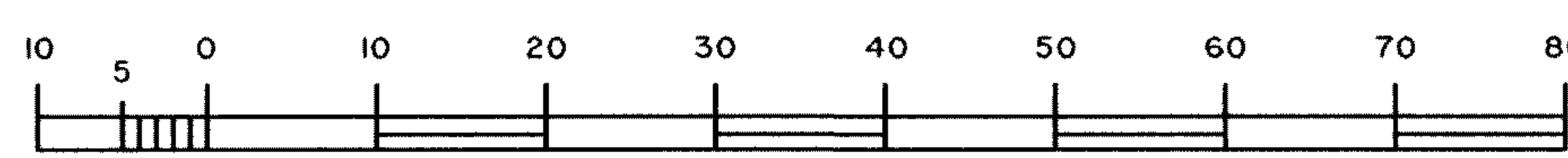
Timber in this area consists of fir, cedar, chinquapin, maple, madrone and pine.

The ties to the geodetic control stations are reported as mean bearing and sea level distance.



Mean magnetic declination 16° East

LEGEND	
◇	Original corner previously remonumented
◆	Original corner remonumented this survey
□	Corner previously established or reestablished
■	Corner previously established or reestablished; remonumented this survey
●	Corner established or reestablished this survey



Scale in Chains

UNITED STATES DEPARTMENT OF THE INTERIOR
BUREAU OF LAND MANAGEMENT

Portland, Oregon September 23, 2002

This plat is strictly conformable to the approved field notes, and the survey, having been correctly executed in accordance with the requirements of law and the regulations of this Bureau, is hereby accepted.

For the Director

May J. M. Hentel

Chief Cadastral Surveyor of Oregon