

# TOWNSHIP 25 SOUTH, RANGE I WEST, OF THE WILLAMETTE MERIDIAN, OREGON

## DEPENDENT RESURVEY AND SUBDIVISION OF SECTION 35

FILED  
 Date: 5-18-2000 By: JC  
 This survey consists of:  
 Map: \_\_\_\_\_  
 Narrative Vol 53  
 Corner Rpt 20316-20326  
 DOUGLAS COUNTY  
 SURVEYOR

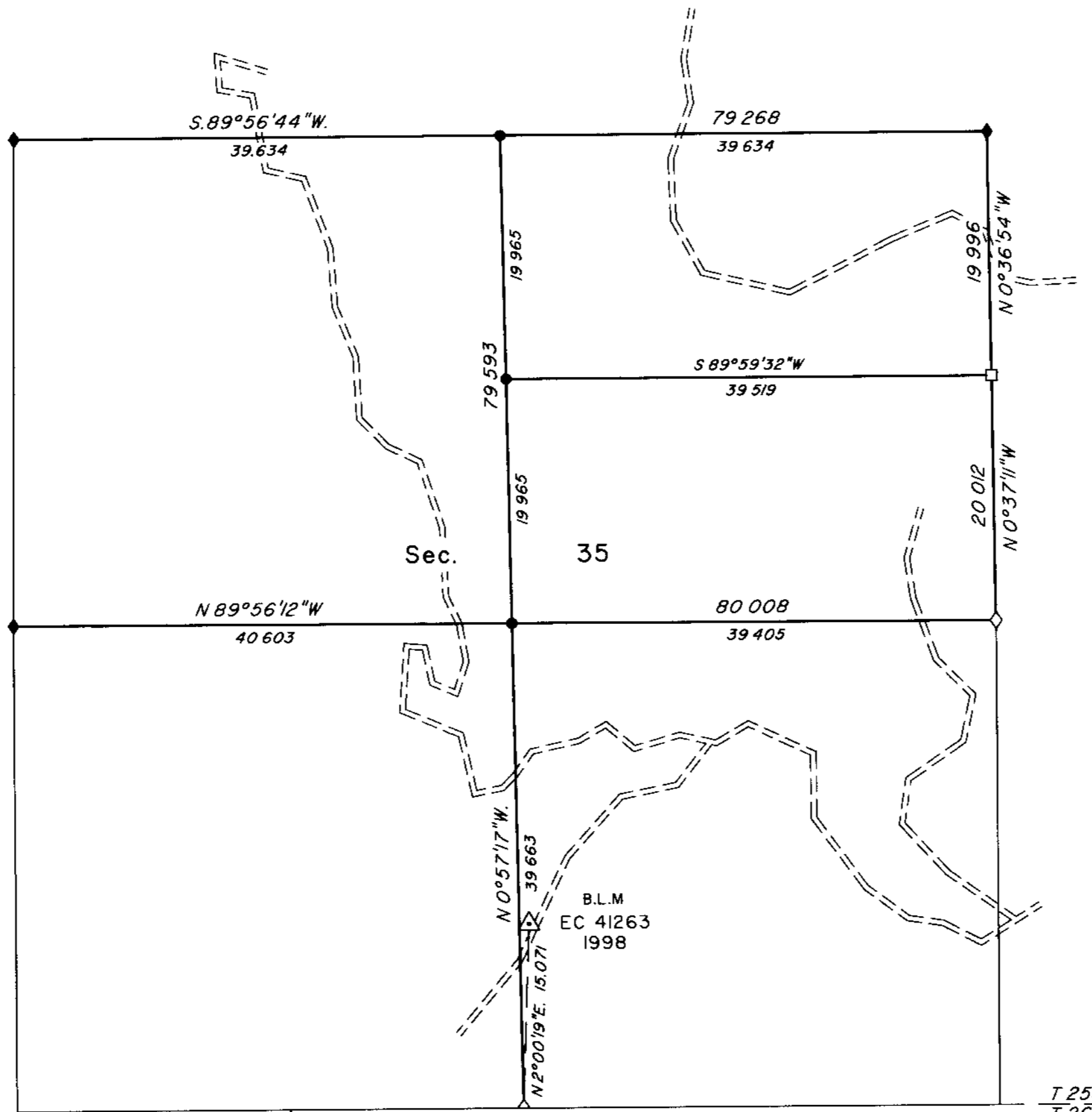
Sec 27

Sec 26

Sec 25

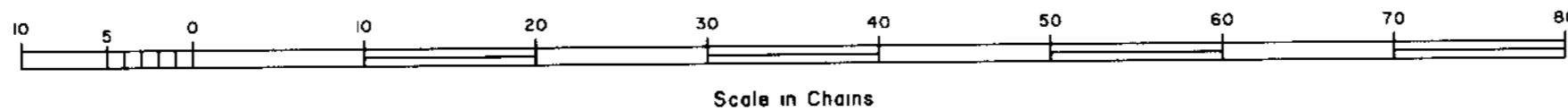
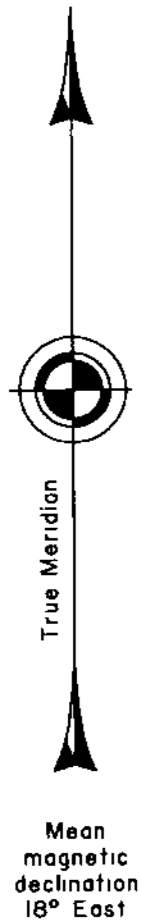
Sec 34

Sec 36



Latitude 43° 20' 59.55\"N  
 Longitude 122° 46' 14.31\"W  
 (NAD 1983 (91))

T 25S  
 T 26S



A history of surveys is contained in the field notes

This plat represents a dependent resurvey of a portion of the subdivision lines, T 25 S, R 1 W, Willamette Meridian, Oregon, designed to restore the corners in their true original locations according to the best available evidence, and the subdivision of section 35

Measured distances and directions have been adjusted by Cadastral Measurement Management (CMM), computer software that incorporates a least squares adjustment routine. The adjusted bearings and distances are reported to the nearest second and 0.001 chain

The lottings and areas are as shown on the plat approved May 6, 1900

The survey was executed by Bryan S Seibold, Cadastral Surveyor, beginning June 18, 1997, and completed July 14, 1997, pursuant to Special Instructions dated March 7, 1997, under Group Number 1828, Oregon

Timber in this area consists of fir, pine, cedar, hemlock, alder, maple, oak, yew and madrone.

The tie to the geodetic control station is reported as mean bearing and sea level distance

LEGEND	
◇	Original corner previously remonumented
◆	Original corner remonumented this survey
□	Corner previously established
●	Corner established or reestablished this survey

UNITED STATES DEPARTMENT OF THE INTERIOR  
 BUREAU OF LAND MANAGEMENT

Portland, Oregon January 27, 2000

This plat is strictly conformable to the approved field notes, and the survey, having been correctly executed in accordance with the requirements of law and the regulations of this Bureau, is hereby accepted

For the Director

*Raymond A. Gardner*  
 Chief Cadastral Surveyor of Oregon