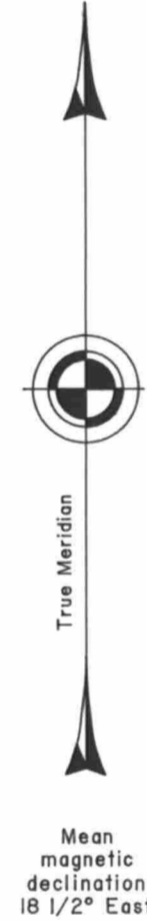
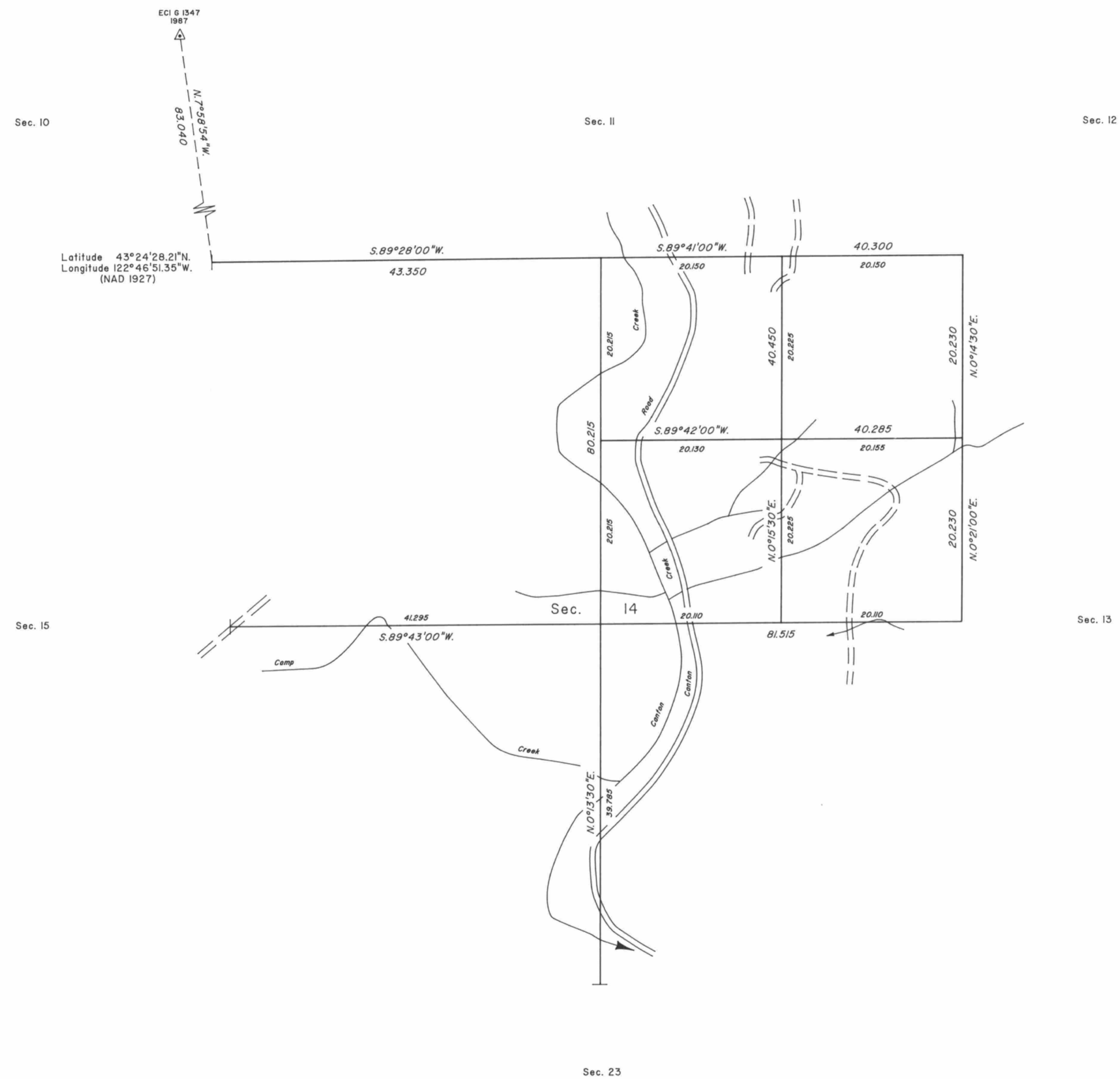


TOWNSHIP 25 SOUTH, RANGE I WEST, OF THE WILLAMETTE MERIDIAN, OREGON

DEPENDENT RESURVEY AND SUBDIVISION OF SECTION 14



A history of surveys is contained in the field notes.

This plat represents a dependent resurvey of a portion of the subdivisional lines, T. 25 S., R. 1 W., Willamette Meridian, Oregon, designed to restore the corners in their true original locations according to the best available evidence, and the subdivision of section 14.

The lottings and areas are as shown on the plat approved May 6, 1901.

The survey was executed by Wayne L. Rogers, Cadastral Surveyor, beginning July 7, 1988, and completed August 18, 1988, pursuant to Special Instructions dated April 26, 1988, under Group Number 1440, Oregon.

Timber in this area consists of fir, yew, cedar, hemlock, madrone, maple, alder, chinquapin, ash and dogwood.

UNITED STATES DEPARTMENT OF THE INTERIOR
BUREAU OF LAND MANAGEMENT

Portland, Oregon

November 8, 1991

This plat is strictly conformable to the approved field notes, and the survey, having been correctly executed in accordance with the requirements of law and the regulations of this Bureau, is hereby accepted.

For the Director

Wayne M. Gardner

Chief Cadastral Surveyor of Oregon