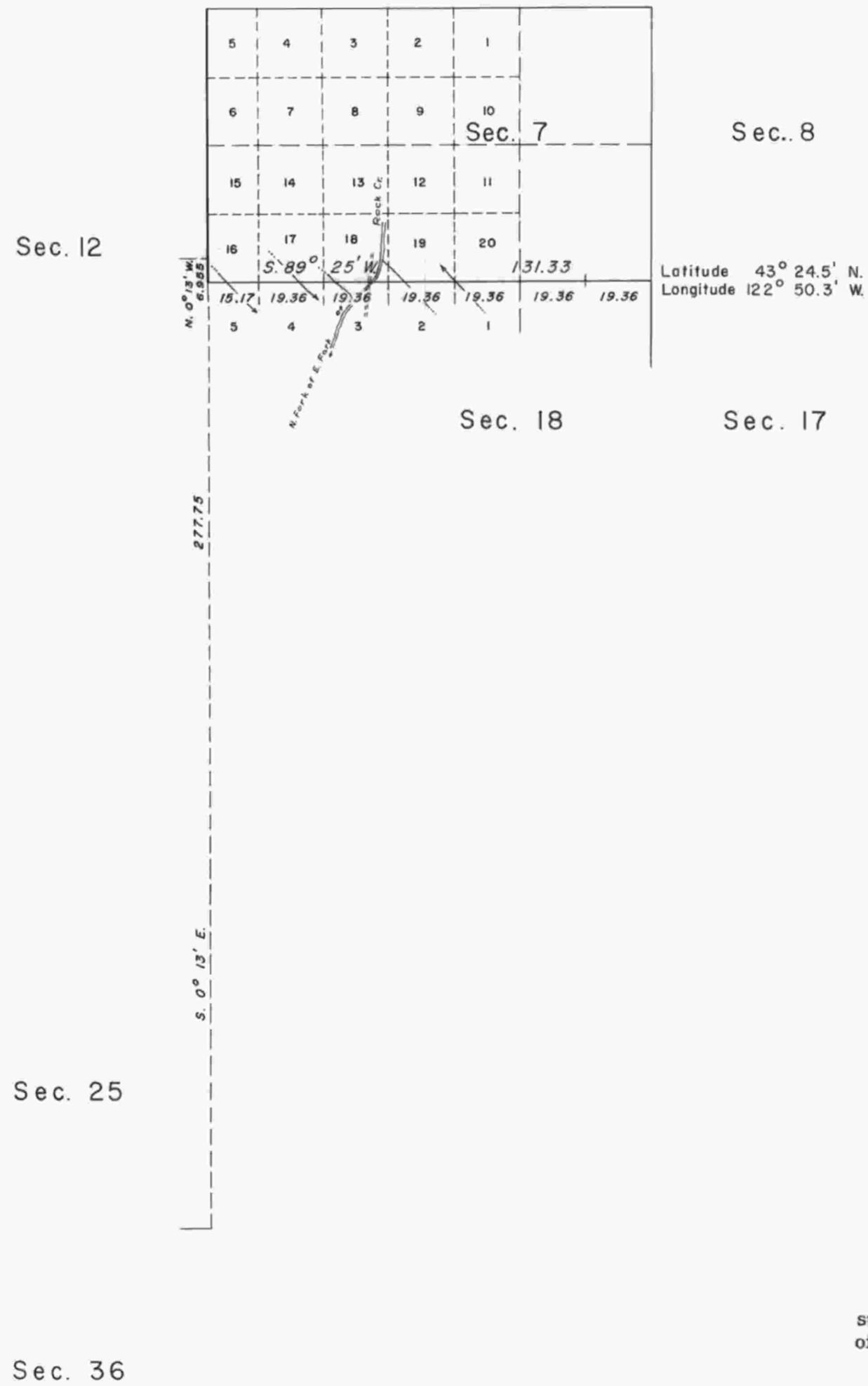


TOWNSHIP 25 SOUTH, RANGE 1 WEST, OF THE WILLAMETTE MERIDIAN, OREGON. DEPENDENT RESURVEY



Mean
Magnetic
Declination
21°05' East

Timber in this area consists of fir, cedar, hemlock, sugar pine, alder, white fir, maple, yew, chinquapin, madrona, and dogwood.



Latitude 43° 24.5' N.
Longitude 122° 50.3' W.

This plat represents a retracement and reestablishment of a portion of the subdivisional lines designed to restore the corners in their true original location according to the best available evidence

The west boundary was surveyed by John A. McQuinn in 1883.

The west boundary was resurveyed and the subdivisional lines surveyed by Hezekiah H. Johnson in 1900.

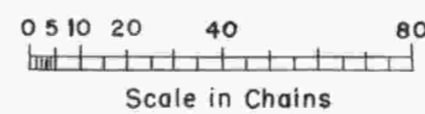
Dependent resurvey of a portion of the subdivisional lines executed by Lynn M. Roseberry, July 29 to August 16, 1957, under special instructions dated June 21, 1957, which provide for the surveys included under Group 353, Oregon.

UNITED STATES DEPARTMENT OF THE INTERIOR
BUREAU OF LAND MANAGEMENT
Washington, D. C. August 12, 1958

This plat is strictly conformable to the approved field notes, and the survey, having been correctly executed in accordance with the requirements of law and the regulations of this Bureau, is hereby accepted.

For the Director

Earl G. Harrington
Cadastral Engineering Staff Officer



FRH