

TOWNSHIP 24 SOUTH, RANGE 8 WEST, OF THE WILLAMETTE MERIDIAN, OREGON

DEPENDENT RESURVEY

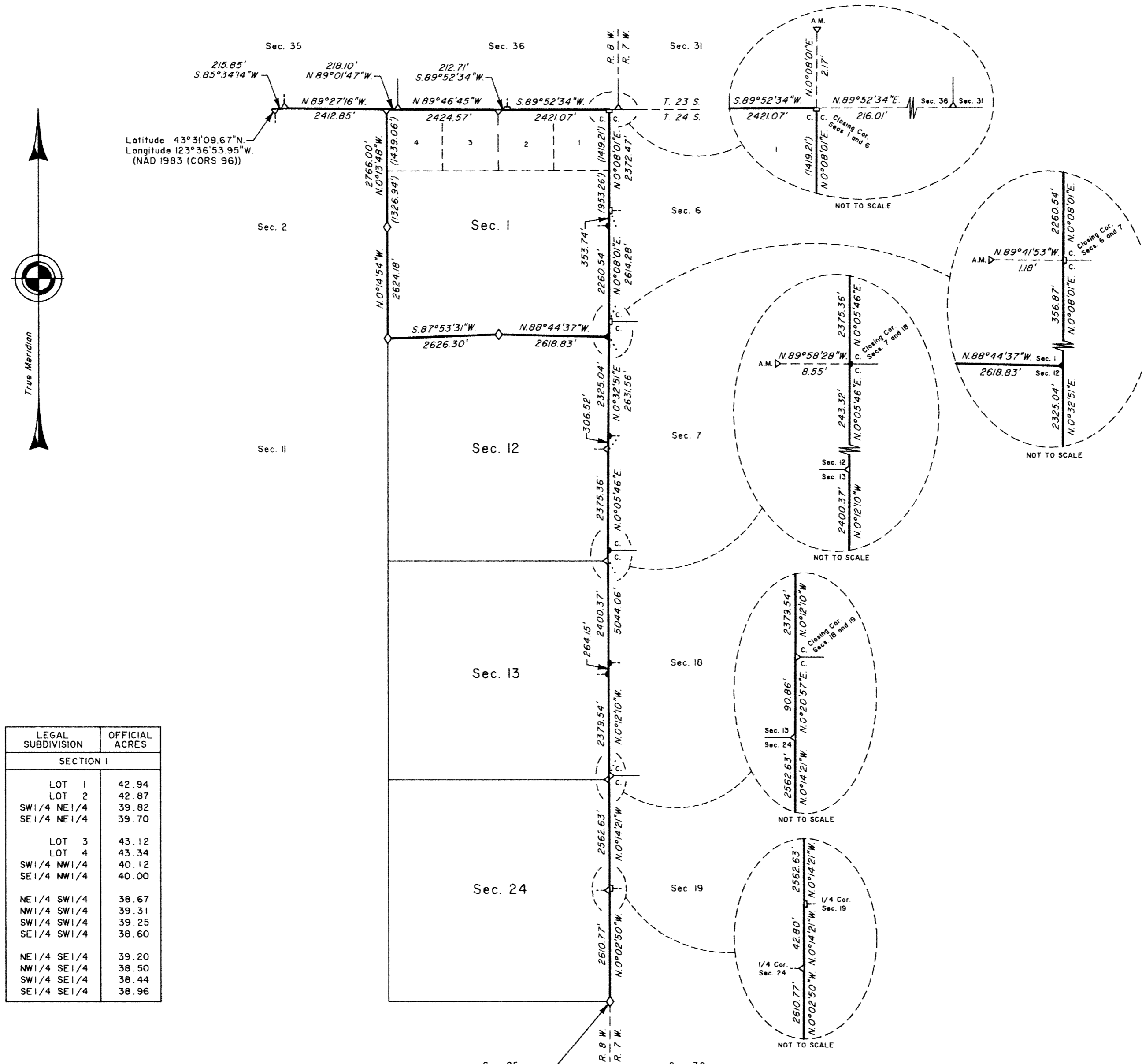
FILED
 Date: 8/31/2011 By: JC
 This survey consists of:
 Map: VOL. 57
 Narrative: PAGES
 Corner Rpt: 22387-22411
 DOUGLAS COUNTY
 SURVEYOR

A history of surveys is contained in the field notes.

This plat represents a dependent resurvey of a portion of the north and east boundaries and subdivisional lines, T. 24 S., R. 8 W., Willamette Meridian, Oregon, designed to restore the corners in their true original locations according to the best available evidence.

Actual quantity acreages have been returned for federal interest lands where indicated. The aliquot parts and lots will retain their designation even though the official acreage has changed. The aliquot part of a section will continue to be subdivided by legal subdivision in accordance with the Manual. When an area has been assigned a lot number, it may be further subdivided only by a supplemental plat or another official survey. The official lottings and areas of federal interest lands not affected by this survey are as shown on the plat approved January 17, 1895.

The survey was executed by A. Bert Skeesick, Cadastral Surveyor, and Robert H. Browning, Surveying Technician, beginning July 6, 2005, and completed January 3, 2006, pursuant to Special Instructions dated March 30, 2005, under Group Number 2104, Oregon.



Latitude 43°31'09.67"N
 Longitude 123°36'53.95"W
 (NAD 1983 (CORS 96))

Latitude 43°27'42.68"N
 Longitude 123°35'06.84"W
 (NAD 1983 (CORS 96))

LEGAL SUBDIVISION	OFFICIAL ACRES
SECTION I	
LOT 1	42.94
LOT 2	42.87
SW1/4 NE1/4	39.82
SE1/4 NE1/4	39.70
LOT 3	43.12
LOT 4	43.34
SW1/4 NW1/4	40.12
SE1/4 NW1/4	40.00
NE1/4 SW1/4	38.67
NW1/4 SW1/4	39.31
SW1/4 SW1/4	39.25
SE1/4 SW1/4	38.60
NE1/4 SE1/4	39.20
NW1/4 SE1/4	38.50
SW1/4 SE1/4	38.44
SE1/4 SE1/4	38.96

LEGEND	
◊	Original corner previously remonumented
◆	Original corner remonumented this survey
□	Corner previously established or reestablished
●	Corner established or reestablished this survey

UNITED STATES DEPARTMENT OF THE INTERIOR
 BUREAU OF LAND MANAGEMENT

Portland, Oregon

This plat is strictly conformable to the approved field notes, and the survey, having been correctly executed in accordance with the requirements of law and the regulations of this Bureau, is hereby accepted.

For the Director

Mary J. M. Hartzel

Chief Cadastral Surveyor of Oregon

June 23, 2011
 Date

