

TOWNSHIP 24 SOUTH, RANGE 8 WEST, OF THE WILLAMETTE MERIDIAN, OREGON.

Sec. 17

DEPENDENT RESURVEY
Sec. 16

Sec. 15

Sec. 19

Sec. 20

Sec. 21

Sec. 22

Sec. 30

Sec. 29

Sec. 28

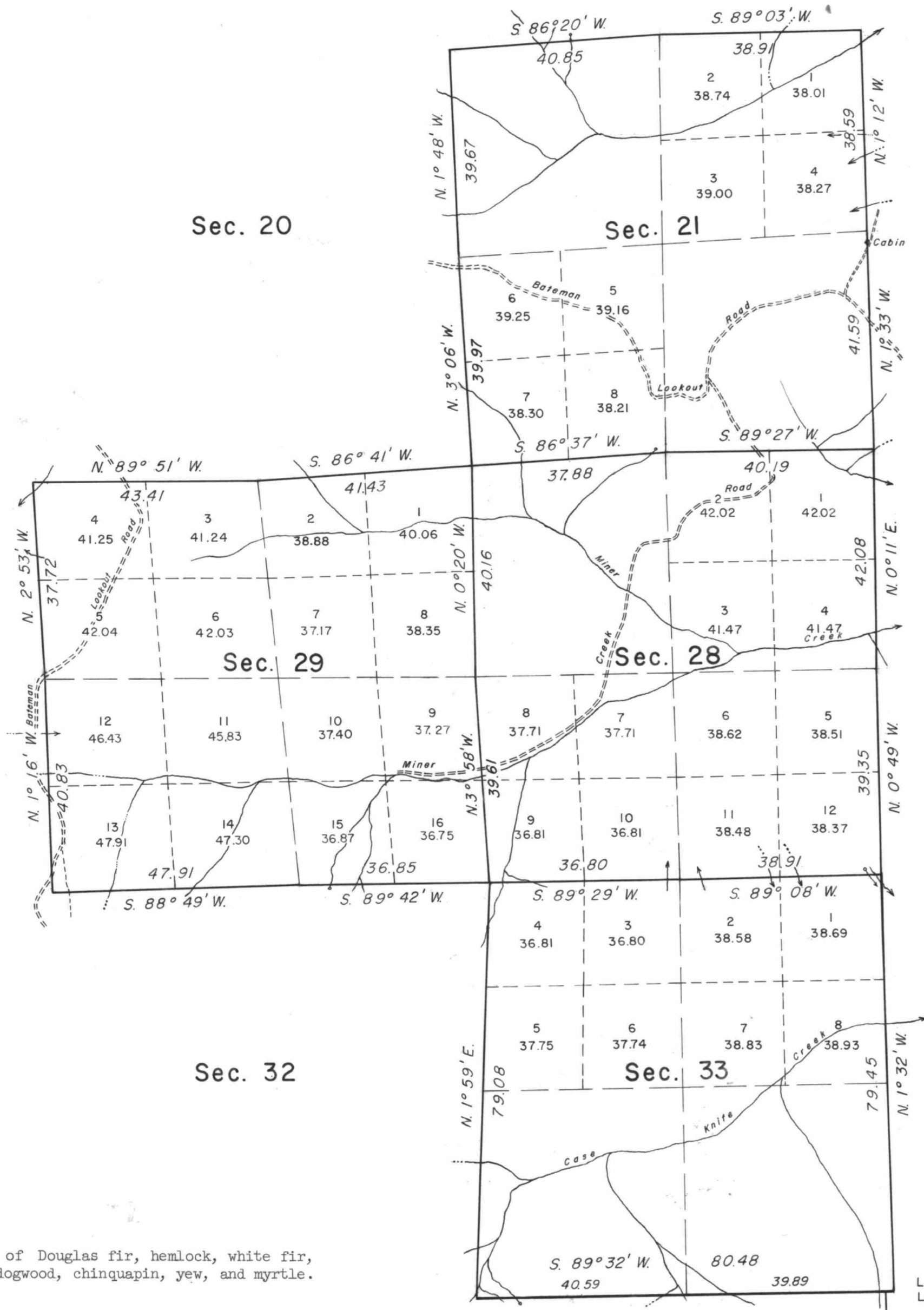
Sec. 27

Sec. 31

Sec. 32

Sec. 33

Sec. 34



This plat represents a retracement and reestablishment of a portion of the south boundary and subdivisional lines of T. 24 S., R. 8 W., Willamette Meridian, Oregon, designed to restore the corners in their true original locations according to the best available evidence; and, except as modified vacant subdivisions are shown hereon, areas are as shown on the plat approved January 17, 1895.

The south boundary of the township was surveyed by William H. Byars, in 1878.

The west three miles of the south boundary were resurveyed and the subdivision was completed by Henry L. Chandler, in 1894.

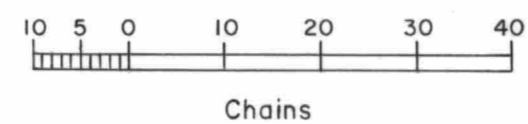
The west four miles of the south boundary were retraced and closing corners for Township 25 South, Range 8 West, were established by Morris Wygant, in 1911.

The south and west boundaries of section 34, were dependently resurveyed and certain original corner points were remonumented by Harold D. Corbin, in 1959.

Dependent resurvey of a portion of the south boundary and subdivisional lines, Township 24 South, Range 8 West, Willamette Meridian, Oregon, executed by C. Albert White and Donald R. Beck, from July 10 to August 10, 1962, under Special Instructions dated June 10, 1959, which provide for the surveys included under Group No. 427, Oregon.



Timber in this area consists of Douglas fir, hemlock, white fir, cedar, maple, alder, madrone, dogwood, chinquapin, yew, and myrtle.



Area resurveyed: 2,539.85 Acres

Latitude 43°26.0' N.
Longitude 123°38.5' W.

UNITED STATES DEPARTMENT OF THE INTERIOR
BUREAU OF LAND MANAGEMENT
Washington, D. C. November 30, 1964

This plat is strictly conformable to the approved field notes, and the survey, having been correctly executed in accordance with the requirements of law and the regulations of this Bureau, is hereby accepted.

For the Director

Chief, Division of Engineering