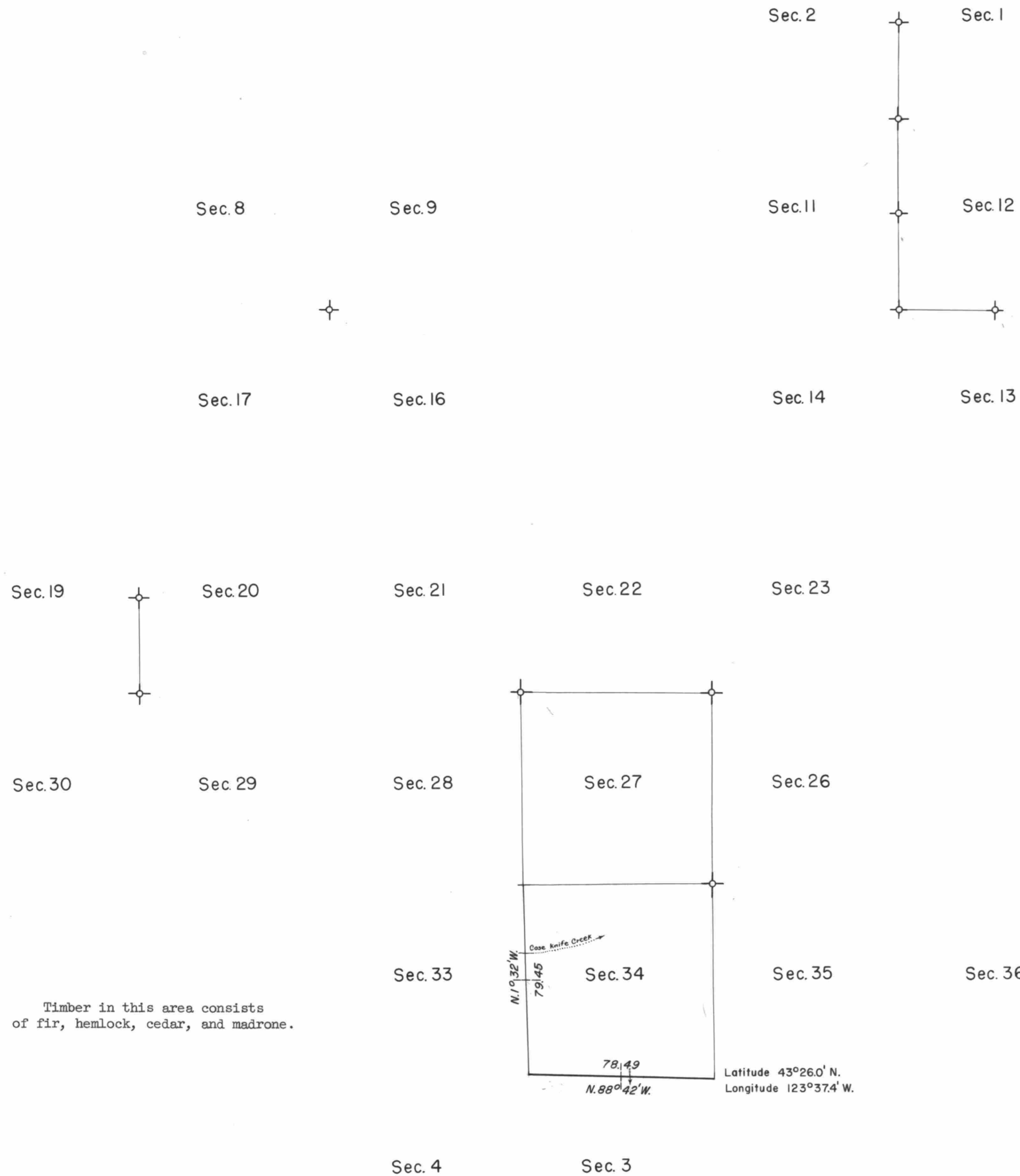
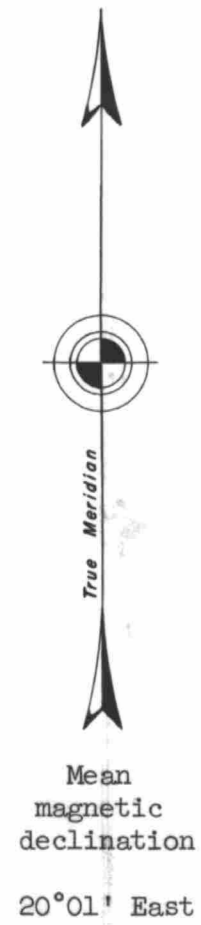
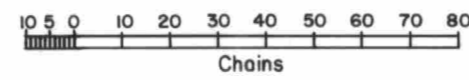


TOWNSHIP 24 SOUTH, RANGE 8 WEST, OF THE WILLAMETTE MERIDIAN, OREGON. DEPENDENT RESURVEY



Timber in this area consists of fir, hemlock, cedar, and madrone.



✦ Corners remonumented in 1959, under Group No. 350.

This plat represents a retracement and reestablishment of a portion of the south boundary and subdivisional lines and remonumentation of certain original corner points, designed to restore the corners in their true original location according to the best available evidence.

The south boundary surveyed by William H. Byars in 1861.

A portion of the south boundary retraced by S. C. Flint in 1894.

A portion of the subdivisional lines surveyed and the south boundary retraced by Henry L. Chandler in 1894.

Morris Wygant retraced the south boundaries of Sections 31, 32, 33, and 34, and set closing corners for Township 25 South, Range 8 West, in 1911.

Dependent resurvey of a portion of the south boundary and subdivisional lines and remonumentation of certain original corner points, Township 24 South, Range 8 West, Willamette Meridian, Oregon, executed by Harold D. Corbin, June 17 to July 14, 1959, under Special Instructions dated May 3, 1957 and June 10, 1959, which provide for the surveys included under Group Nos. 427 and 350, Oregon.

UNITED STATES DEPARTMENT OF THE INTERIOR
BUREAU OF LAND MANAGEMENT
Washington, D.C. September 20, 1960

This plat is strictly conformable to the approved field notes, and the survey, having been correctly executed in accordance with the requirements of law and the regulations of this Bureau, is hereby accepted.

For the Director

Cadastral Engineering Staff Officer